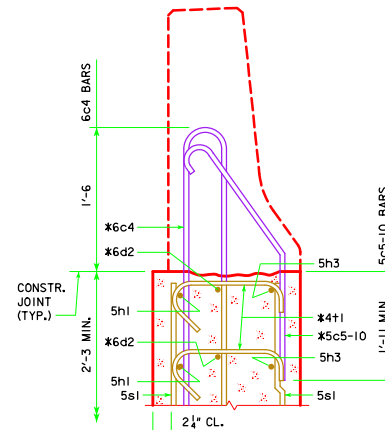


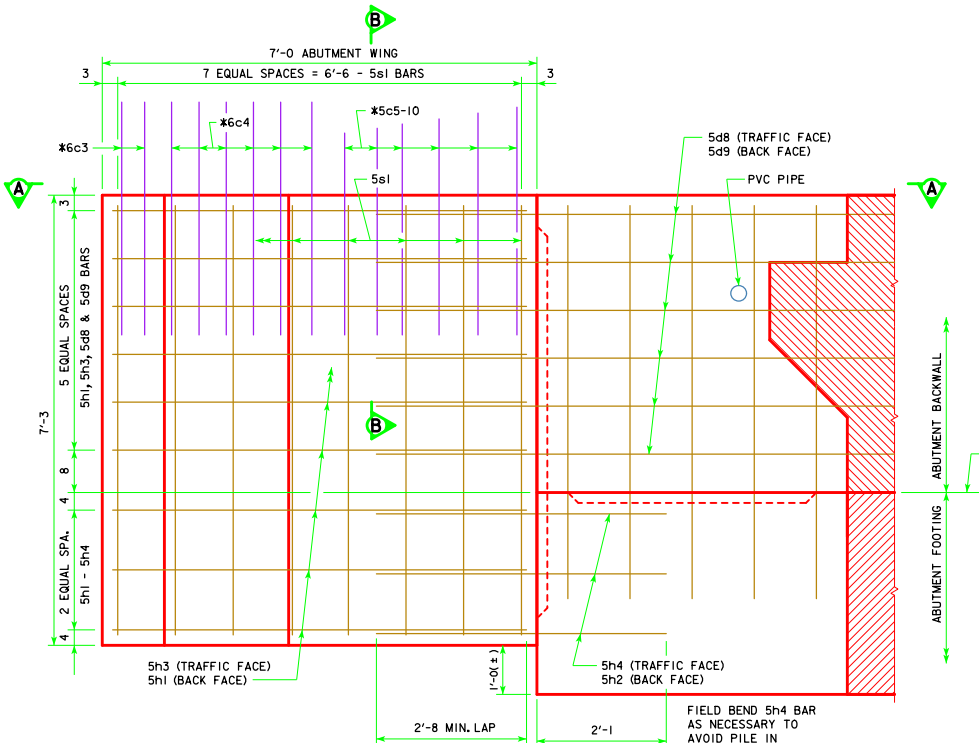
VIEW A-A



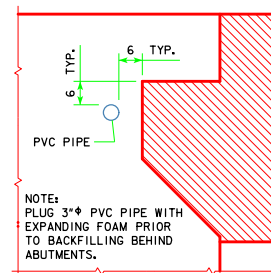
SECTION B-B

* BARRIER RAIL END SECTION BARS TO BE PLACED WITH ABUTMENT WING.

SEE END SECTION DETAILS ON SHEET RS40-089-14 FOR DETAILS OF BARRIER RAIL END SECTION. REINFORCING BARS 6c3, 6c4, 5c5-10, 6d2 & 4t1 ARE INCLUDED IN THE BARRIER RAIL QUANTITIES.



ABUTMENT WING - ELEVATION VIEW



PVC PIPE LOCATION

NOTE:

1. USE FOR 340'-0 BRIDGES.
2. REINFORCING STEEL QUANTITY IS INCLUDED IN THE DECK AND ABUTMENT REINFORCEMENT QUANTITIES.
3. SEE CONCRETE PLACEMENT QUANTITIES TABLE FOR VALUES.

LATEST REVISION DATE

APPROVED BY BRIDGE ENGINEER
Norman E. Mc Donald



STANDARD DESIGN - 40' ROADWAY, 3 SPAN BRIDGES
ROLLED STEEL BEAM BRIDGES

OCTOBER, 2014

**ABUTMENT WING DETAILS
BRIDGE 340'-0**

RS40-030-14