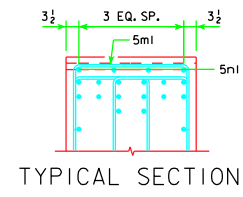
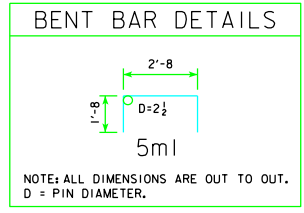


STEP REINFORCING BAR LIST ONE PIER								
		G ≤ 2.2%			2.2% < G ≤ 5.0%			
BAR	LENGTH	SHAPE	NO.	SIZE	WEIGHT	NO.	SIZE	WEIGHT
5ml	6'-0"		16	5	100	20	5	125
5ml	2'-10"		16	5	47	20	5	59
TOTAL (L.B.)					147			184

G = GRADE (%)



NOTES:

THE TABLE BELOW LISTS THE ADDITIONAL CONCRETE VOLUME REQUIRED IN EACH ABUTMENT FOOTING/PIER CAP BASED ON THE ROADWAY GRADE AT EACH ABUTMENT FOOTING/PIER CAP. ADDITIONAL CONCRETE SHOULD BE ADDED TO THE PLANS FOR EACH ABUTMENT FOOTING/PIER CAP THAT HAS 0.5 CU. YDS. OR MORE OF ADDITIONAL CONCRETE. VALUES SHOULD BE EXCLUDED FOR SCENARIOS THAT HAVE LESS THAN 0.5 CU. YDS. OF ADDITIONAL CONCRETE PER SUBSTRUCTURE UNIT. VALUES MAY BE INTERPOLATED FOR GRADES BETWEEN THE VALUES SHOWN IN THE TABLE.

	ROADWAY GRADE AT SUBSTRUCTURE UNIT				
	1%	2%	3%	4%	5%
EACH ABUTMENT FOOTING					
160'-0" TO 320'-0" SPANS	--	--	--	0.6	0.8
340'-0" SPAN	--	--	0.5	0.7	0.9
EACH PILE BENT OR TEE PIER CAP					
160'-0" TO 340'-0" SPANS	--	--	--	0.6	0.7

LATEST REVISION DATE <i>Mark E. McDonald</i> APPROVED BY BRIDGE ENGINEER	<p>Iowa Department of Transportation Highway Division</p>
	STANDARD DESIGN - 40' ROADWAY, 3 SPAN BRIDGES ROLLED STEEL BEAM BRIDGES JUNE, 2010
	ADDITIONAL QUANTITIES 10° SKEW

RS40-166-10