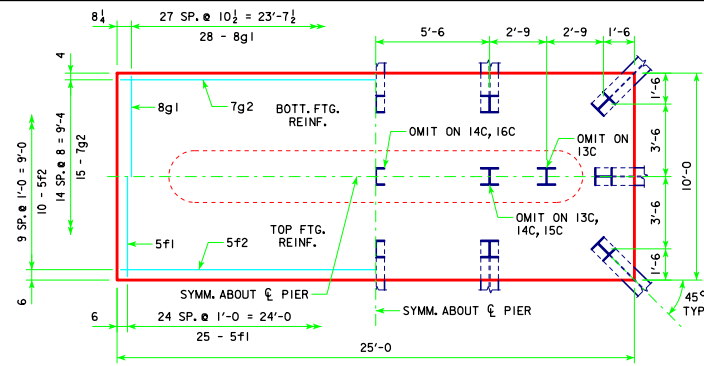
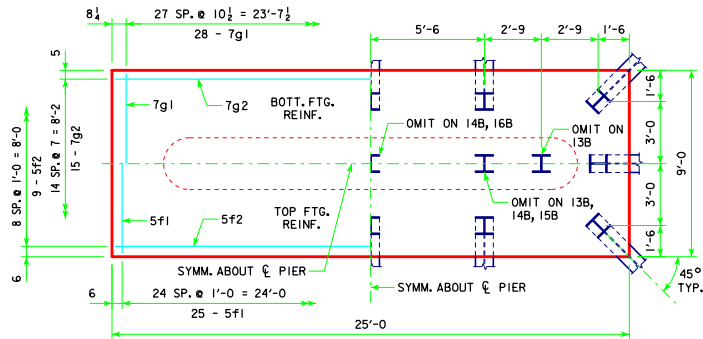


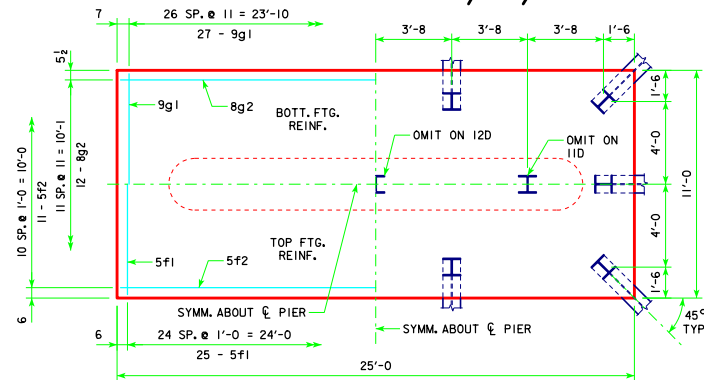
4'-0" x 9'-0" x 25'-0" FOR 10B, 11B & 12B



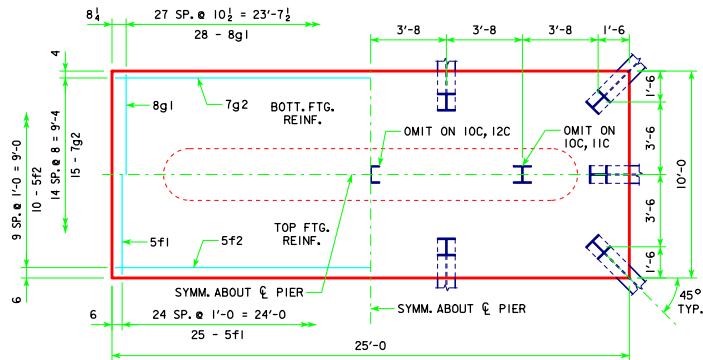
4'-0" x 10'-0" x 25'-0" FOR 13C, 14C, 15C & 16C



4'-0" x 9'-0" x 25'-0" FOR 13B, 14B, 15B & 16B



4'-0" x 11'-0" x 25'-0" FOR 11D & 12D



4'-0" x 10'-0" x 25'-0" FOR 10C, 11C & 12C

NOTE:  
SEE SHEET RS40-121-14 FOR FOOTING NOTES.

LATEST REVISION DATE	 APPROVED BY BRIDGE ENGINEER	 STANDARD DESIGN - 40' ROADWAY, 3 SPAN BRIDGES <b>ROLLED STEEL BEAM BRIDGES</b> OCTOBER, 2014	<b>RS40-122-14</b> TEE PIER-HPI0x57 SRL-2 STEEL PILE FOOTINGS 0° SKEW - SHEET 2