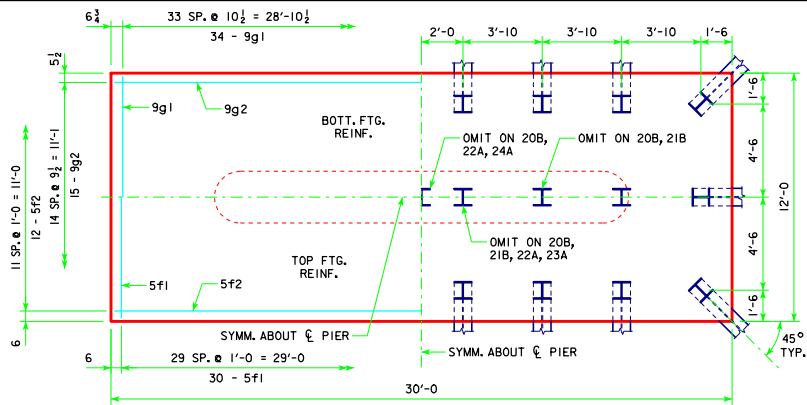
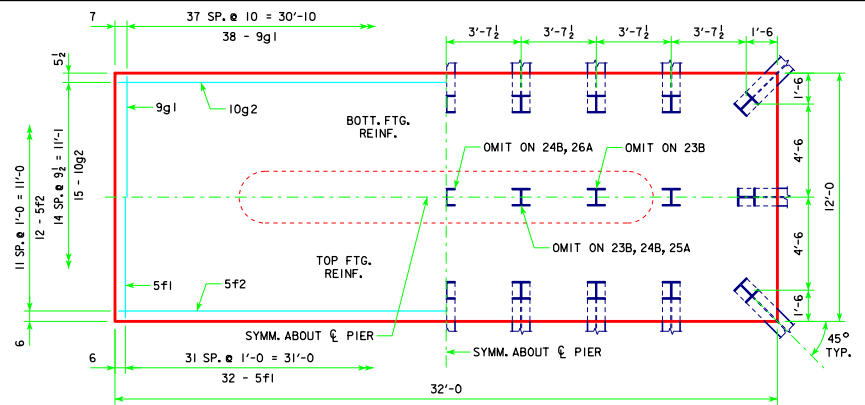


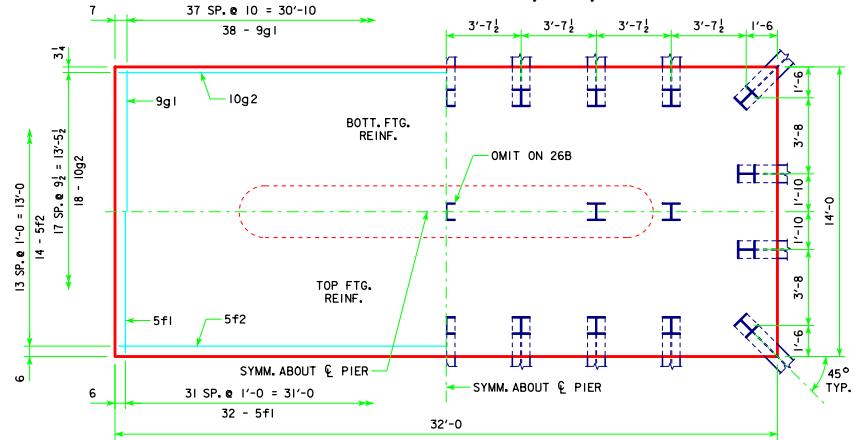
REVISED 05-13 - REVISION FOR LRFD PILE DESIGN.



**4'-0 x 12'-0 x 30'-0 FOR 20B, 21B, 22A, 23A & 24A**



**4'-0 x 12'-0 x 32'-0 FOR 23B, 24B, 25A & 26A**



**4'-0 x 14'-0 x 32'-0 FOR 26B & 27A**

NOTE:  
SEE SHEET RS40-118-10 FOR FOOTING NOTES.

05-13 LATEST REVISION DATE	 APPROVED BY BRIDGE ENGINEER	 STANDARD DESIGN - 40' ROADWAY, 3 SPAN BRIDGES <b>ROLLED STEEL BEAM BRIDGES</b> JUNE, 2010
TEE PIER-HPI0x57 SRL-1 STEEL PILE FOOTINGS 0° SKEW - SHEET 3		<b>RS40-120-10</b>