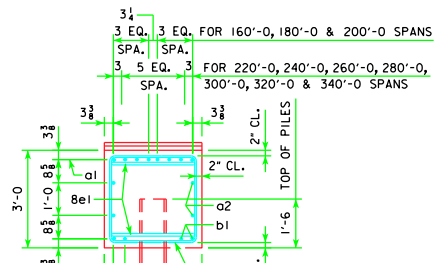
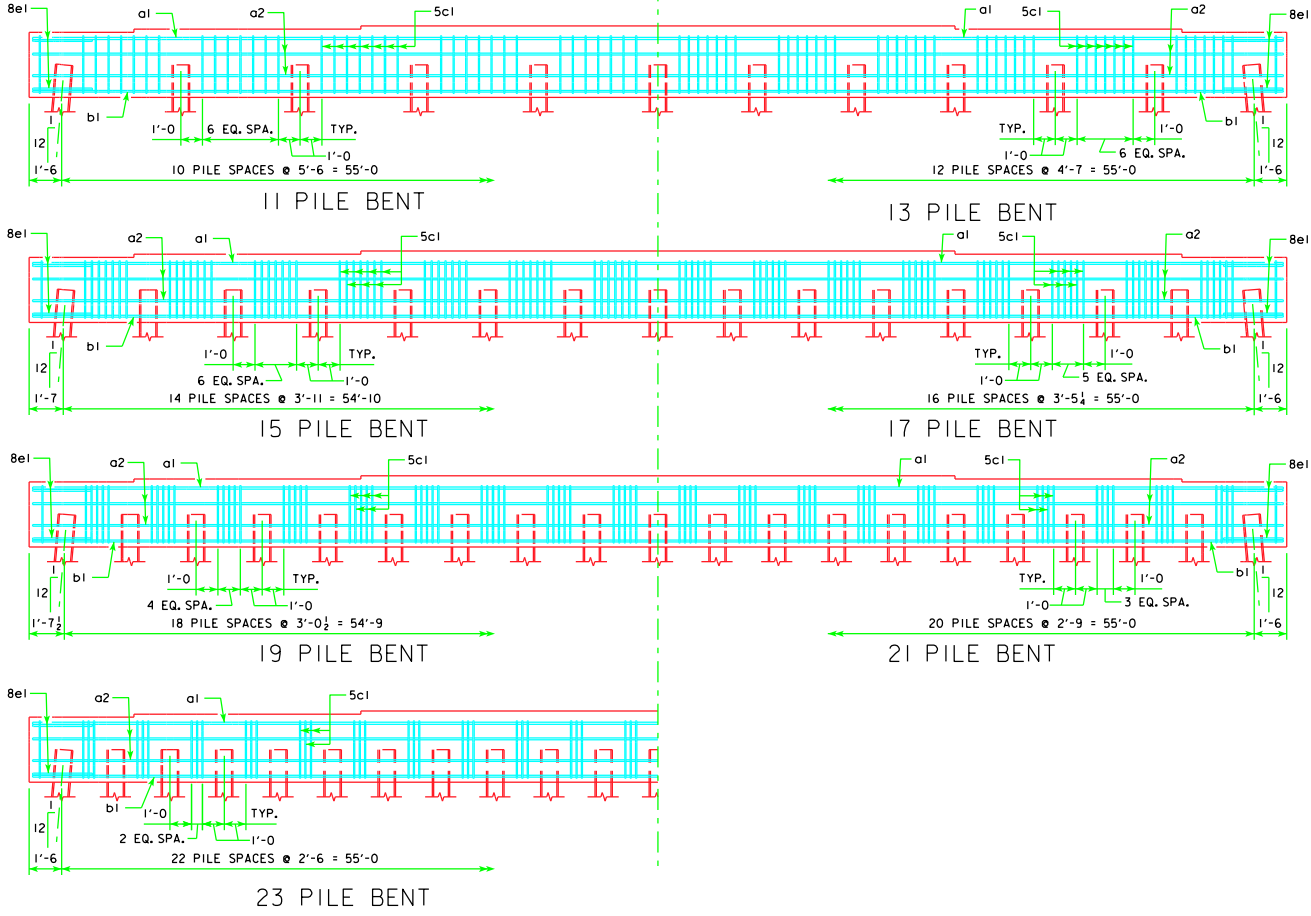


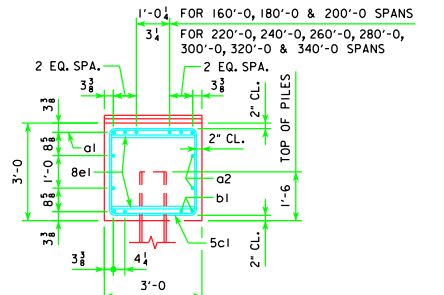
TYPICAL PLAN

NOTE:
 THE HEIGHT OF THE STEPS ON THE BRIDGE SEAT IS EQUAL TO THE DIFFERENCE IN ELEVATIONS OF THE TOP OF SLAB AT ADJACENT BEAMS ALONG ϕ PIER.
 ANCHOR BOLTS REQUIRED FOR FIXED PIER BEARINGS ONLY.
 FOR BOLT AND BEARING SIZES, SEE RS40-093-10, RS40-094-10 OR RS40-095-10.

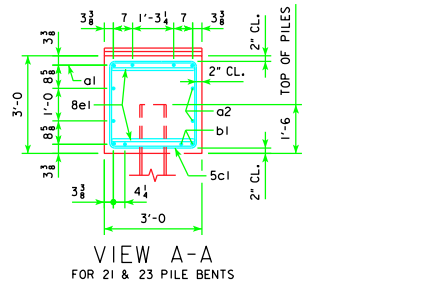
SYMMETRICAL ABOUT ϕ PIER EXCEPT STEPS



VIEW A-A FOR 11, 13 & 15 PILE BENTS



VIEW A-A FOR 17 & 19 PILE BENTS



VIEW A-A FOR 21 & 23 PILE BENTS

LATEST REVISION DATE <i>Thomas E. Mc Donald</i> APPROVED BY BRIDGE ENGINEER	
	STANDARD DESIGN - 40' ROADWAY, 3 SPAN BRIDGES ROLLED STEEL BEAM BRIDGES JUNE, 2010
	PILE BENT PIERS
RS40-112-10 45° SKEW	