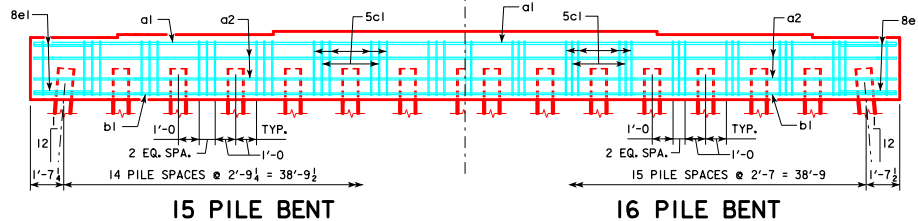
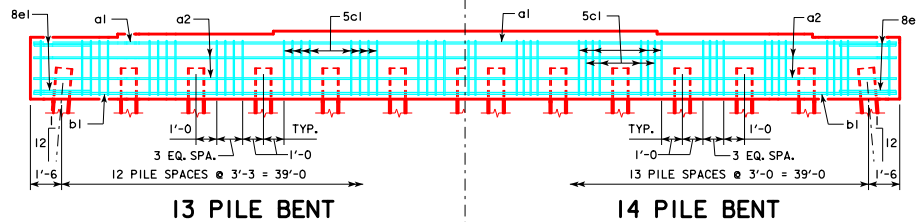
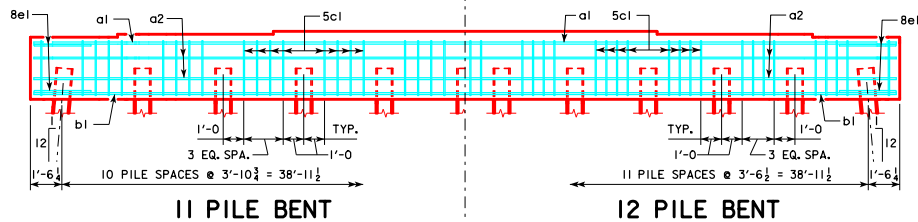
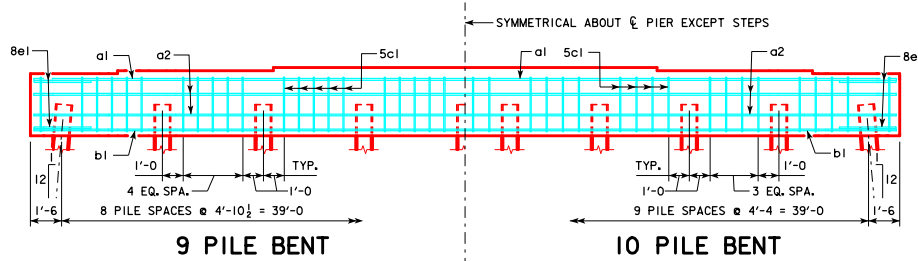
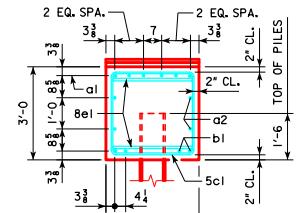
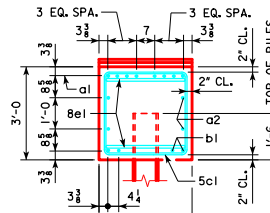


TYPICAL PLAN



NOTE:
 THE HEIGHT OF THE STEPS ON THE BRIDGE SEAT IS EQUAL TO THE DIFFERENCE IN ELEVATIONS OF THE TOP OF SLAB AT ADJACENT BEAMS ALONG CL PIER.
 ANCHOR BOLTS REQUIRED FOR FIXED PIER BEARINGS ONLY. FOR BOLT AND BEARING SIZES, SEE RS40-093-10, RS40-094-10 OR RS40-095-10.



| | |
|---|---|
| LATEST REVISION DATE APPROVED BY BRIDGE ENGINEER <i>Thomas E. McQuinn</i> | |
| | STANDARD DESIGN - 40' ROADWAY, 3 SPAN BRIDGES ROLLED STEEL BEAM BRIDGES JUNE, 2010 |
| | PILE BENT PIERS RS40-100-10 10° SKEW |