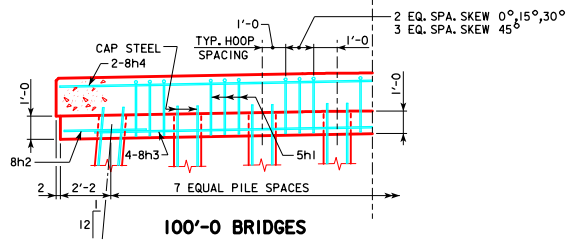
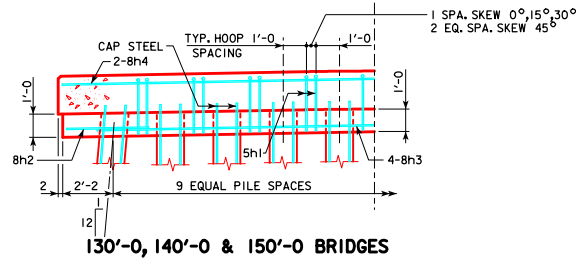
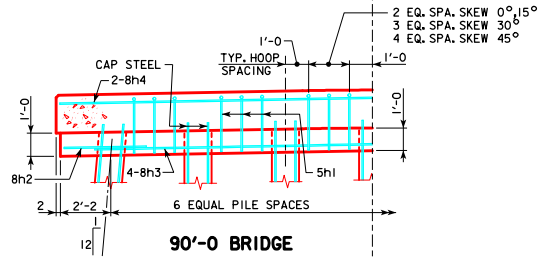
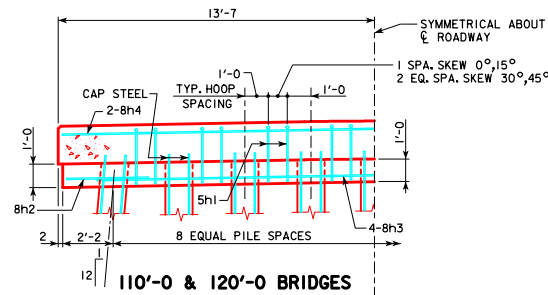
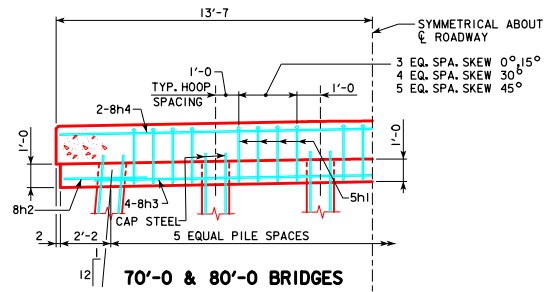
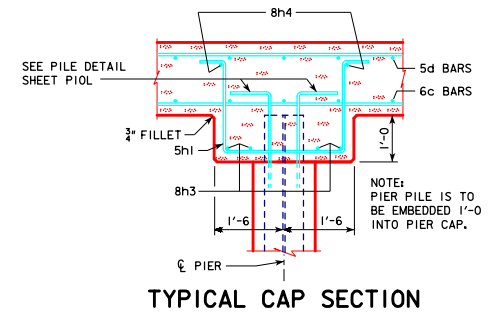


REVISED 12-08 - REVISED PILES REQUIRED FOR 110'-0" BRIDGE.
REVISED 06-2022: UPDATED BRIDGE ENGINEER SIGNATURE.



HALF SECTION NEAR PIER
SHOWING STIRRUP SPACING AND NUMBER OF PILING
NOTE: BOTTOM OF CAP ELEVATIONS WILL BE REQUIRED AT THE \bar{C} OF ROADWAY AND AT EACH EXTERIOR PILE.



08-2022 LATEST REVISION DATE APPROVED BY BRIDGE ENGINEER	 STANDARD DESIGN - 24'-0 ROADWAY, 3 SPAN BRIDGES CONTINUOUS CONCRETE SLAB BRIDGES NOVEMBER, 2006	
	MONOLITHIC PIER CAP DETAILS ALL BRIDGES	J24-24-06
	SHEET 2 OF 2	