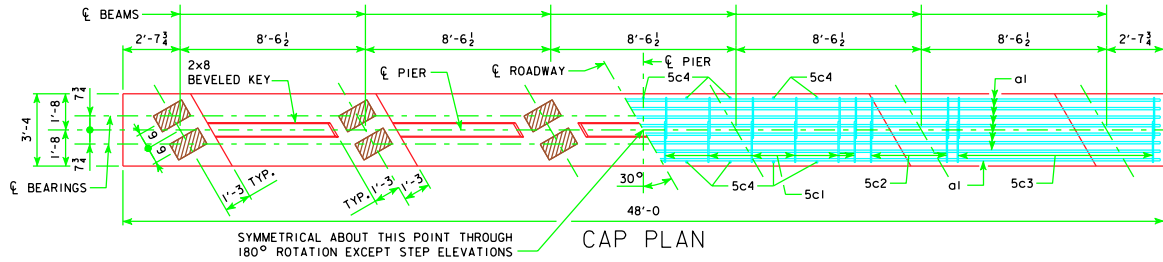


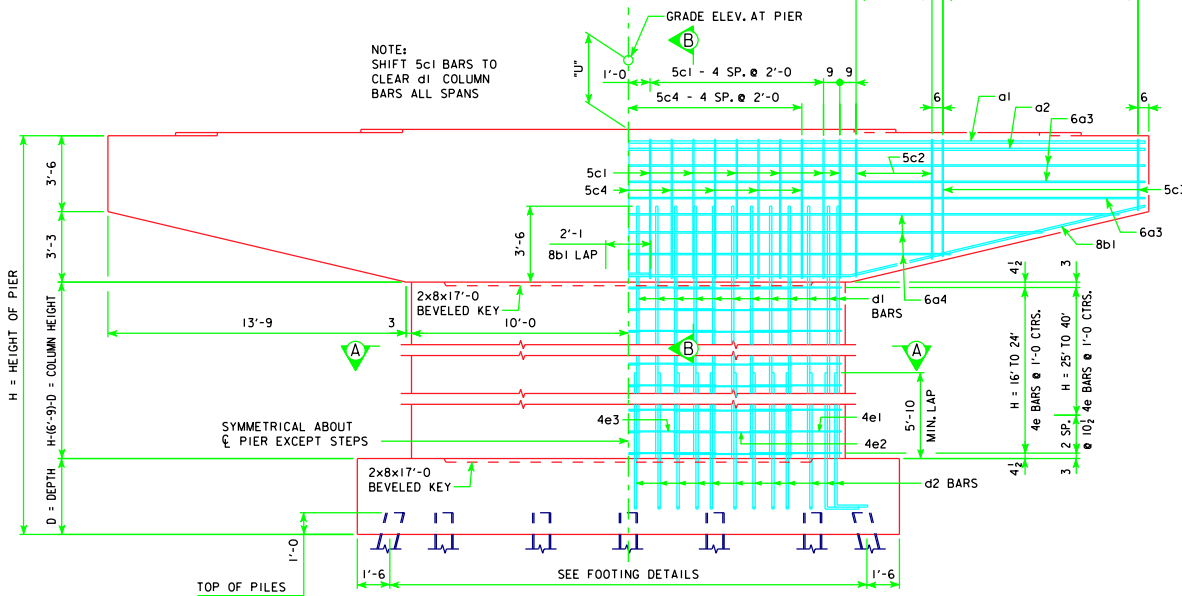
REVISED 01-10 - ADDED PIER NOTES FROM H40-74-06 STANDARD.



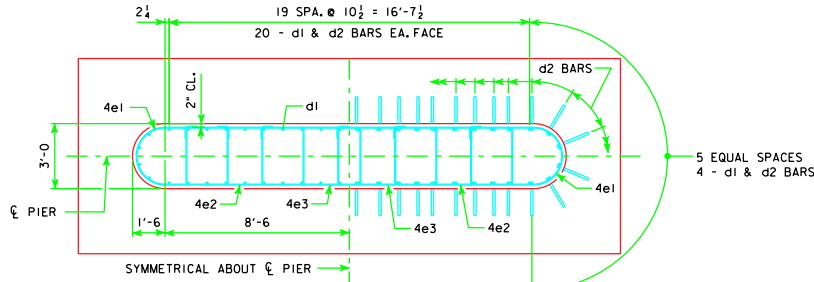
SYMMETRICAL ABOUT THIS POINT THROUGH 180° ROTATION EXCEPT STEP ELEVATIONS

5c2 - 4 SP. @ 10 1/2" = 3'-6" - 138'-10", 151'-4", 163'-10", 176'-4", 188'-10", 201'-4"
 5c2 - 5 SP. @ 8 3/4" (+) = 3'-6" - 213'-10", 226'-4", 243'-0"

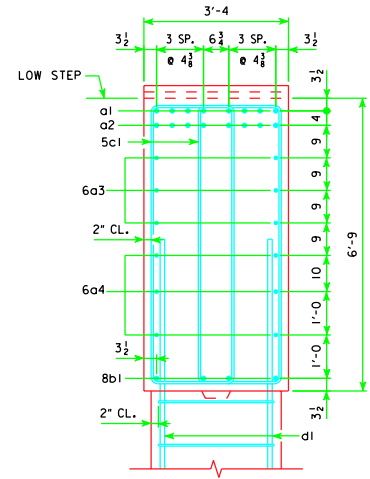
NOTE:
 SHIFT 5c1 BARS TO CLEAR d1 COLUMN BARS ALL SPANS



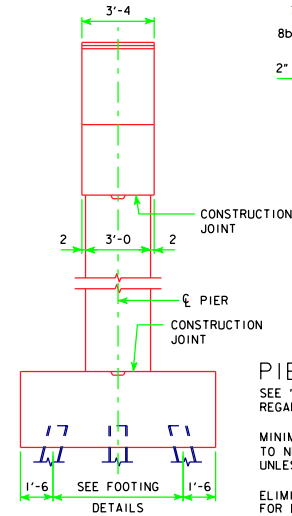
FRONT ELEVATION



SECTION A-A



SECTION B-B



END ELEVATION

PIER NOTES:
 SEE "TEE PIER NOTES" ON H40-02-06 FOR NOTES REGARDING APPLICATION OF THESE PIER STANDARDS.

MINIMUM CLEAR DISTANCE FROM FACE OF CONCRETE TO NEAR REINFORCING BAR SHALL BE 2 INCHES UNLESS OTHERWISE NOTED OR SHOWN.

ELIMINATE 2x8 BEVELED KEYWAY ON TOP OF CAP FOR EXPANSION PIERS.

FOR SIZE OF BEARING PADS, SEE H40-44-06.

SEE SHEET H40-22-06 FOR "U" DIMENSION.

LATEST REVISION DATE 01-10	APPROVED BY BRIDGE ENGINEER <i>Norman L. Mc Donald</i>		
		STANDARD DESIGN - 40' ROADWAY, THREE SPAN BRIDGE PRETENSIONED PRESTRESSED CONCRETE BEAM BRIDGES AUGUST, 2009	
TEE PIER CAP AND COLUMN 30° SKEW		H40-73-06	