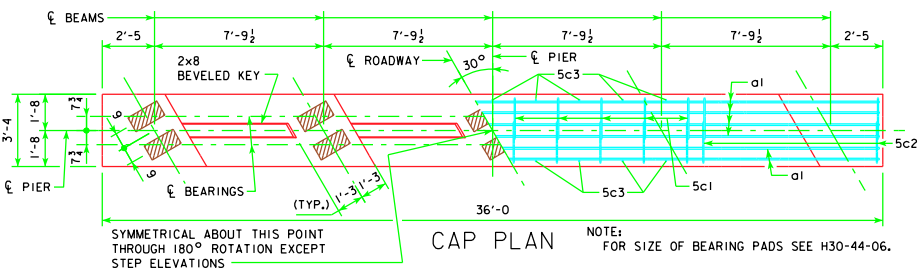
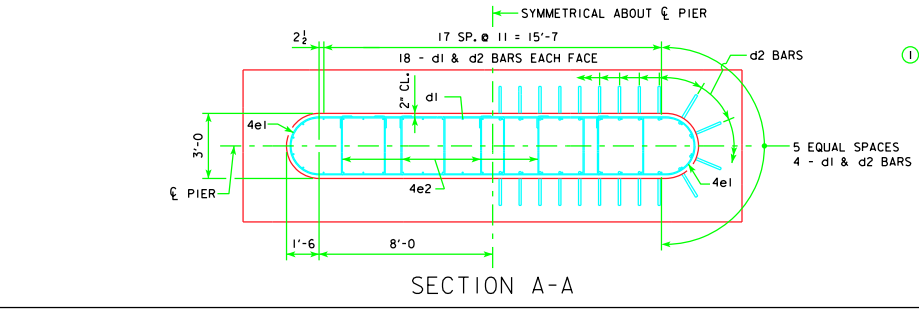
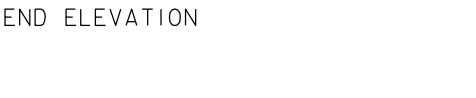
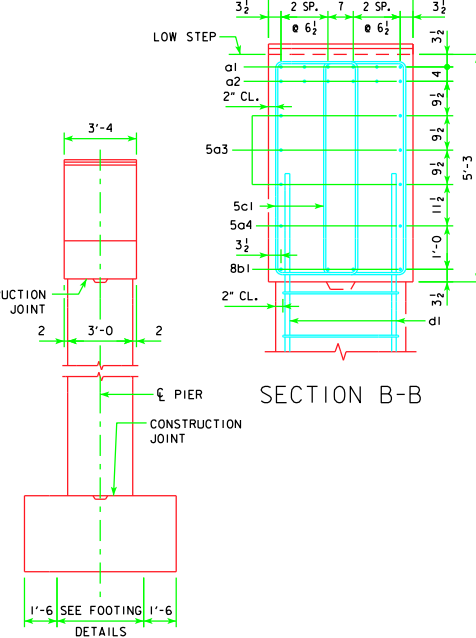
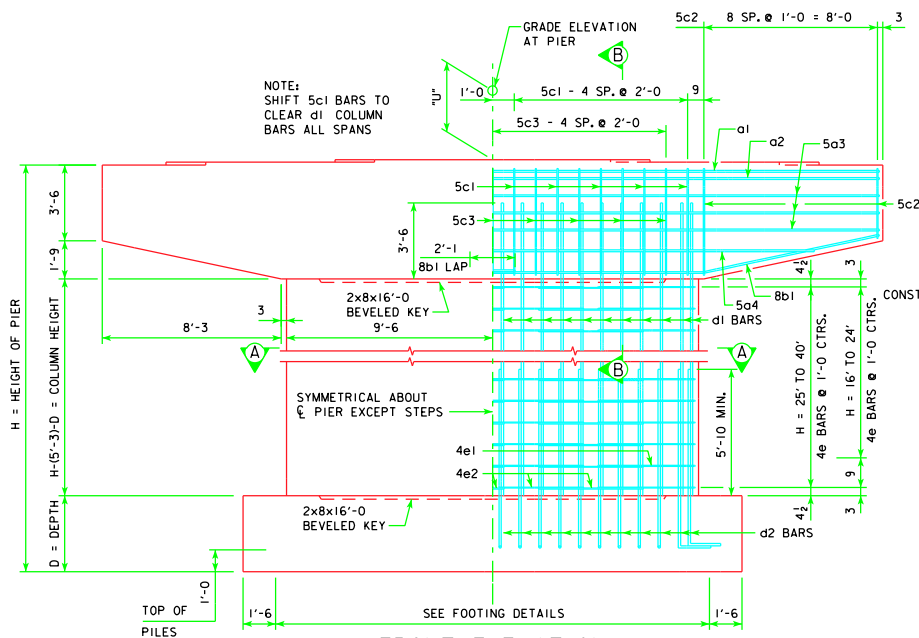


REVISED 07-10 - SHEET WAS REVISED TO MEET LRFD SPECIFICATIONS.



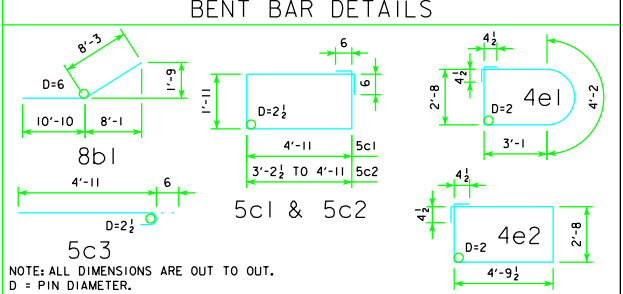
**CAP**

REINFORCING STEEL	138'-10		151'-4		163'-10		176'-4		188'-10		201'-4		213'-10		226'-4		243'-0						
	BAR	LENGTH	NO.	SIZE	WEIGHT	NO.	SIZE	WEIGHT	NO.	SIZE	WEIGHT	NO.	SIZE	WEIGHT	NO.	SIZE	WEIGHT	NO.	SIZE	WEIGHT			
a1	35'-8	6	8	571	6	8	571	6	8	571	6	8	571	6	8	571	6	8	571	6	8	571	
a2	35'-8	6	7	437	6	7	437	6	7	437	6	7	437	6	7	437	6	7	437	6	7	437	
5o3	35'-8	6	5	223	6	5	223	6	5	223	6	5	223	6	5	223	6	5	223	6	5	223	
5o4	29'-10	2	5	62	2	5	62	2	5	62	2	5	62	2	5	62	2	5	62	2	5	62	
8b1	19'-1	8	8	408	8	8	408	8	8	408	8	8	408	8	8	408	8	8	408	8	8	408	
5c1	14'-8	20	5	306	20	5	306	20	5	306	20	5	306	20	5	306	20	5	306	20	5	306	
5c2	VARIABLES	36	5	487	36	5	487	36	5	487	36	5	487	36	5	487	36	5	487	36	5	487	
5c3	5'-5	18	5	102	18	5	102	18	5	102	18	5	102	18	5	102	18	5	102	18	5	102	
TOTAL (L.B.)				2596		2596		2596		2596		2596		2730		2730		2887		2887			
STRUCTURAL CONCRETE (CY)				22.3		22.3		22.3		22.3		22.3		22.3		22.3		22.3		22.3			



**COLUMN**

H IN FEET	COLUMN HEIGHT	STRUCTURAL CONCRETE (CY)	REINFORCING STEEL												TOTAL WEIGHT (L.B.)								
			d1 BAR		4e1 BAR		4e2 BAR		4e3 BAR		4e4 BAR		4e5 BAR										
NO.	SIZE	LENGTH	WEIGHT	NO.	SIZE	LENGTH	WEIGHT	NO.	SIZE	LENGTH	WEIGHT	NO.	SIZE	LENGTH	WEIGHT	NO.	SIZE	LENGTH	WEIGHT	NO.	SIZE	LENGTH	WEIGHT
16	7'-3	14.8	44	10	10'-9	2035	16	4	13'-9	147	32	4	15'-8	335	2517								
17	8'-3	16.8	44	10	11'-9	2225	18	4	13'-9	165	36	4	15'-8	377	2767								
18	9'-3	18.9	44	10	12'-9	2414	20	4	13'-9	184	40	4	15'-8	419	3017								
19	10'-3	20.9	44	10	13'-9	2603	22	4	13'-9	202	44	4	15'-8	460	3265								
20	11'-3	22.9	44	10	14'-9	2793	24	4	13'-9	220	48	4	15'-8	502	3515								
21	12'-3	25.0	44	10	15'-9	2982	26	4	13'-9	239	52	4	15'-8	544	3765								
22	13'-3	27.0	44	10	16'-9	3171	28	4	13'-9	257	56	4	15'-8	586	4014								
23	14'-3	29.1	44	10	17'-9	3361	30	4	13'-9	276	60	4	15'-8	628	4265								
24	15'-3	31.1	44	10	18'-9	3550	32	4	13'-9	294	64	4	15'-8	670	4514								
25	15'-9	32.1	44	10	19'-3	3645	32	4	13'-9	294	64	4	15'-8	670	4609								
26	16'-9	34.2	44	10	20'-3	3834	34	4	13'-9	312	68	4	15'-8	712	4858								
27	17'-9	36.2	44	10	21'-3	4023	36	4	13'-9	331	72	4	15'-8	754	5108								
28	18'-9	38.2	44	10	22'-3	4213	38	4	13'-9	349	76	4	15'-8	795	5357								
29	19'-9	40.3	44	10	23'-3	4402	40	4	13'-9	367	80	4	15'-8	837	5606								
30	20'-9	42.3	44	10	24'-3	4591	42	4	13'-9	386	84	4	15'-8	879	5856								
31	21'-9	44.4	44	10	25'-3	4781	44	4	13'-9	404	88	4	15'-8	921	6106								
32	22'-9	46.4	44	10	26'-3	4970	46	4	13'-9	423	92	4	15'-8	963	6356								
33	23'-9	48.4	44	10	27'-3	5159	48	4	13'-9	441	96	4	15'-8	1005	6605								
34	24'-9	50.5	44	10	28'-3	5349	50	4	13'-9	459	100	4	15'-8	1047	6855								
35	25'-9	52.5	44	10	29'-3	5538	52	4	13'-9	478	104	4	15'-8	1088	7104								
36	26'-9	54.6	44	10	30'-3	5727	54	4	13'-9	496	108	4	15'-8	1130	7353								
37	27'-9	56.6	44	10	31'-3	5917	56	4	13'-9	514	112	4	15'-8	1172	7603								
38	28'-9	58.6	44	10	32'-3	6106	58	4	13'-9	533	116	4	15'-8	1214	7853								
39	29'-9	60.7	44	10	33'-3	6295	60	4	13'-9	551	120	4	15'-8	1256	8102								
40	30'-9	62.7	44	10	34'-3	6485	62	4	13'-9	569	124	4	15'-8	1298	8352								



① SEE SHEET H30-24-06 FOR STEP REINFORCING STEEL QUANTITY AND DETAILS.

**PIER NOTES:**  
SEE "TEE PIER NOTES" ON H30-02-06 FOR NOTES REGARDING APPLICATION OF THESE PIER STANDARDS.  
MINIMUM CLEAR DISTANCE FROM FACE OF CONCRETE TO NEAR REINFORCING BAR SHALL BE 2 INCHES UNLESS OTHERWISE NOTED OR SHOWN.  
ELIMINATE 2x8 BEVELED KEYWAY ON TOP OF CAP FOR EXPANSION PIERS.  
SEE SHEET H30-22-06 FOR "U" DIMENSION.

07-10 LATEST REVISION DATE   APPROVED BY BRIDGE ENGINEER	 <b>Iowa Department of Transportation</b> Highway Division
	STANDARD DESIGN - 30' ROADWAY, THREE SPAN BRIDGES <b>PRETENSIONED PRESTRESSED CONCRETE BEAM BRIDGES</b> DECEMBER, 2006
	<b>TEE PIER CAP AND COLUMN</b> 30° SKEW