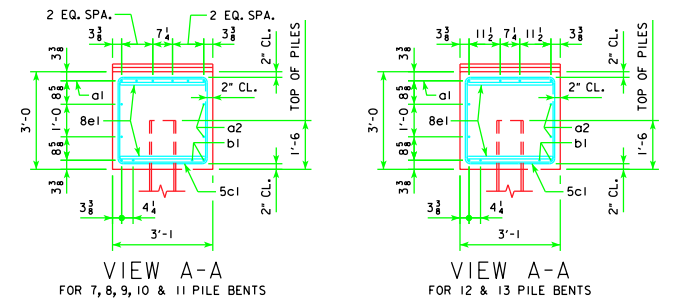
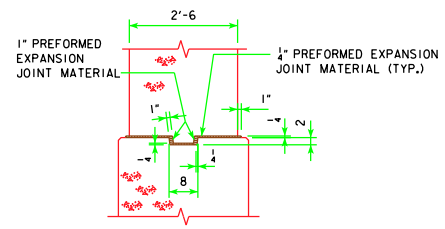
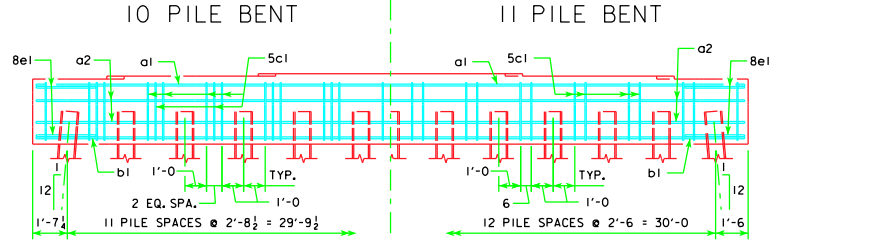
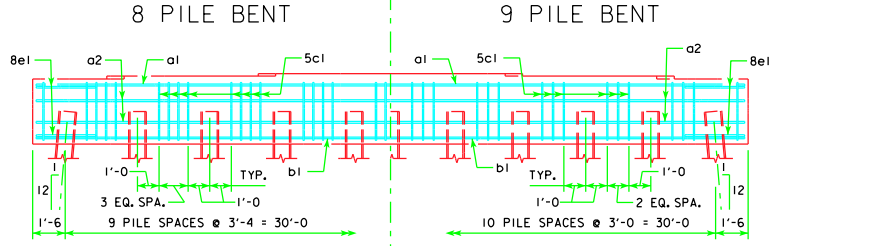
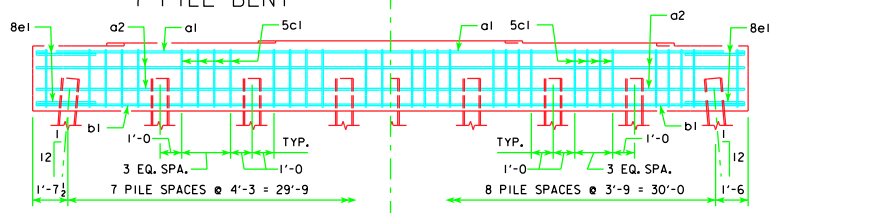
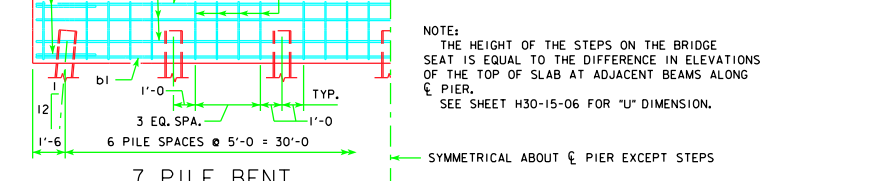
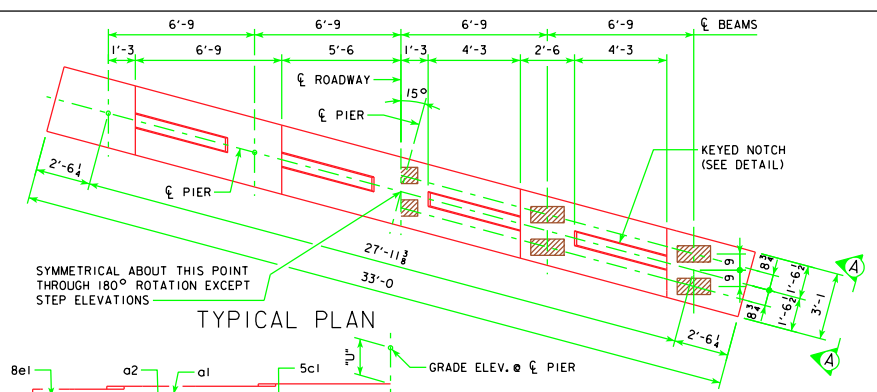


REVISED 07-10 - SHEET WAS REVISED TO MEET LRFD SPECIFICATIONS.



07-10 LATEST REVISION DATE <i>Thomas C. McQuinn</i> APPROVED BY BRIDGE ENGINEER		
	STANDARD DESIGN - 30' ROADWAY, THREE SPAN BRIDGES PRETENSIONED PRESTRESSED CONCRETE BEAM BRIDGES DECEMBER, 2006	
PILE BENT PIERS 15° SKEW		H30-48-06