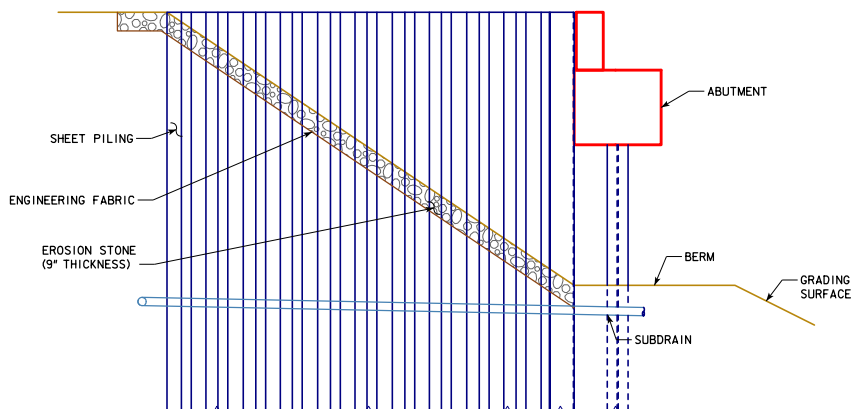
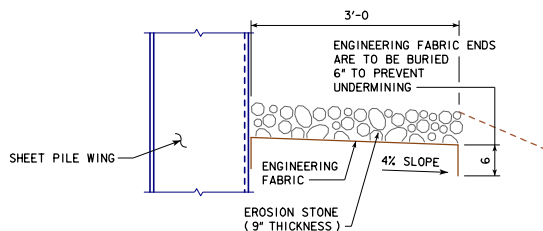


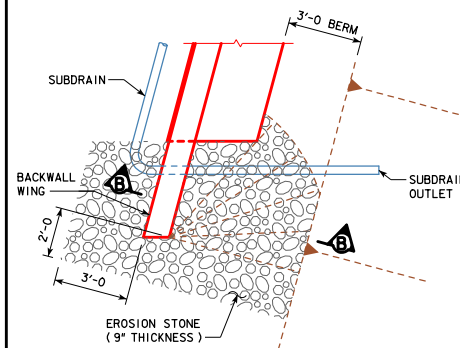
TOP VIEW OF WING ARMORING



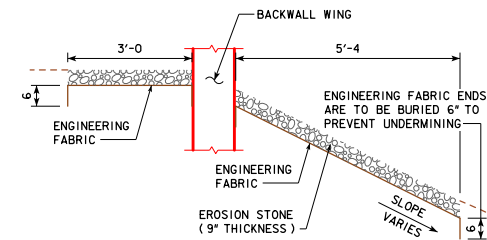
PROFILE VIEW OF WING ARMORING



SECTION A-A
ABUTMENTS WITH SHEET PILE WINGS



TOP VIEW OF WING ARMORING



SECTION B-B



ABUTMENTS WITH CONCRETE WINGS
(SKEWED LAYOUT SHOWN, 0° SKEW SIMILAR)

SUBDRAIN NOTES:

SEE B30-66-16 AND B30-67-16 SHEETS FOR DETAILS OF PLACING ALL SUBDRAINS AND SUBDRAIN OUTLETS REQUIRED FOR THIS STRUCTURE.
THE BRIDGE CONTRACTOR IS TO INSTALL SUBDRAINS BEHIND THE ABUTMENT. THE SUBDRAINS SHALL BE 4" IN DIAMETER AND MEET THE REQUIREMENTS OF SECTION 4143.01B OF THE CURRENT I.D.O.T. STANDARD SPECIFICATION. THE SUBDRAIN OUTLET SHALL CONSIST OF A 6'-0" LENGTH OF PIPE WITH A REMOVABLE RODENT GUARD.

EROSION STONE WING ARMORING NOTES:

EROSION STONE SHALL BE PLACED ALONG THE SIDES OF THE WINGS AS SHOWN. THIS IS TYPICAL AT EACH CORNER OF THE BRIDGE UNLESS OTHERWISE NOTED IN THE PLANS. THE EROSION STONE AT THESE LOCATIONS SHALL BE UNDERLAINED WITH ENGINEERING FABRIC IN ACCORDANCE WITH ARTICLE 4196.01, B, 3, OF THE STANDARD SPECIFICATIONS.
THE EROSION STONE SHALL BE IN ACCORDANCE WITH SECTION 4130 OF THE STANDARD SPECIFICATIONS. MATERIAL PASSING THE 3 INCH SCREEN BUT 100% RETAINED ON A 1 INCH SCREEN MAY BE USED AS CHOKE STONE.
THE EROSION STONE SHALL BE DEPOSITED, SPREAD, CONSOLIDATED AND SHAPED BY MECHANICAL OR HAND METHODS THAT WILL PROVIDE UNIFORM 9" DEPTH AND DENSITY AND PROVIDE UNIFORM SURFACE APPEARANCE.
PAYMENT FOR THE BRIDGE WING ARMORING WILL BE BID PER SQUARE YARD. COST WILL INCLUDE ENGINEERING FABRIC, EROSION STONE, EXCAVATION, SHAPING, AND COMPACTION TO DIMENSIONS SHOWN IN THESE PLANS. BID ITEM SHALL BE "BRIDGE WING ARMORING - EROSION STONE".

LATEST REVISION DATE	 APPROVED BY BRIDGE ENGINEER	 STANDARD DESIGN - 30'-0 ROADWAY, SINGLE SPAN CONCRETE BOX BEAM BRIDGES	
		DECEMBER, 2016	
		BRIDGE WING ARMORING	B30-68-16