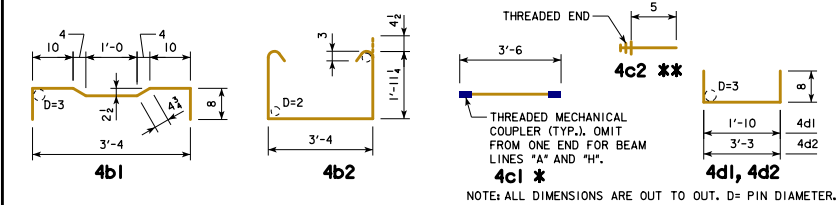


**EPOXY COATED REINFORCING BAR LIST**  
27" x 48" x 50'-0" PPCBB, 0° SKEW

BEAM LINE		BEAM LINE "A"			BEAM LINES "B", "D" AND "F"			BEAM LINES "C", "E" AND "G"			BEAM LINE "H"		
BAR	SHAPE	NO.	LENGTH	WEIGHT	NO.	LENGTH	WEIGHT	NO.	LENGTH	WEIGHT	NO.	LENGTH	WEIGHT
4a1		4	50'-10"	136	4	50'-10"	136	4	50'-10"	136	4	50'-10"	136
4a2		1	49'-8"	33	1	49'-8"	33	1	49'-8"	33	1	49'-8"	33
4b1		75	4'-9 1/2"	240	76	4'-9 1/2"	243	75	4'-9 1/2"	240	76	4'-9 1/2"	243
4b2		54	7'-11 1/2"	287	54	7'-11 1/2"	287	54	7'-11 1/2"	287	54	7'-11 1/2"	287
4c1 *		76	3'-6"	178	77	3'-6"	180	76	3'-6"	178	77	3'-6"	180
4c2 **		2	0'-5"	21	154	0'-5"	43	152	0'-5"	42	77	0'-5"	21
4c3 *		2	3'-2"	4	-	-	-	2	3'-2"	4	-	-	-
4d1		8	3'-2"	17	8	3'-2"	17	8	3'-2"	17	8	3'-2"	17
4d2		12	4'-7"	37	12	4'-7"	37	12	4'-7"	37	12	4'-7"	37
TOTAL (LBS.)		953			976			974			954		

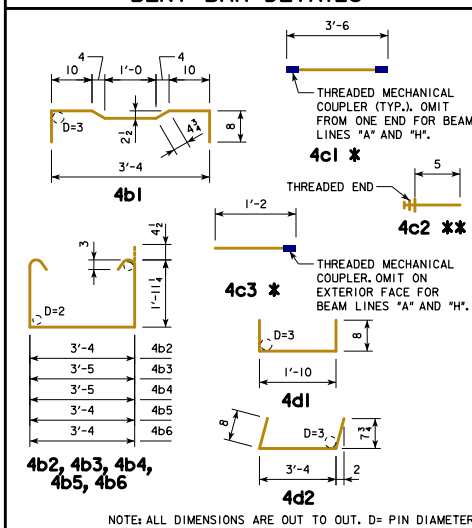
**BENT BAR DETAILS**



**EPOXY COATED REINFORCING BAR LIST**  
27" x 48" x 50'-0" PPCBB, 15° SKEW

BEAM LINE		BEAM LINES "A" AND "H"			BEAM LINES "B" THRU "G"		
BAR	SHAPE	NO.	LENGTH	WEIGHT	NO.	LENGTH	WEIGHT
4a1		4	50'-10"	136	4	50'-10"	136
4a2		1	49'-8"	33	1	49'-8"	33
4b1		74	4'-9 1/2"	237	74	4'-9 1/2"	237
4b2		45	7'-11 1/2"	239	45	7'-11 1/2"	239
4b3		4	8'-0 1/2"	21	4	8'-0 1/2"	21
4b4		2	8'-0 1/2"	11	2	8'-0 1/2"	11
4b5		2	7'-11 1/2"	11	2	7'-11 1/2"	11
4b6		2	7'-11 1/2"	11	2	7'-11 1/2"	11
4c1 *		75	3'-6"	175	75	3'-6"	175
4c2 **		2	0'-5"	21	152	0'-5"	42
4c3 *		2	1'-2"	2	2	1'-2"	2
4c4		4	3'-4"	9	4	3'-4"	9
4d1		8	3'-2"	17	8	3'-2"	17
4d2		12	4'-8"	37	12	4'-8"	37
TOTAL (LBS.)		960			981		

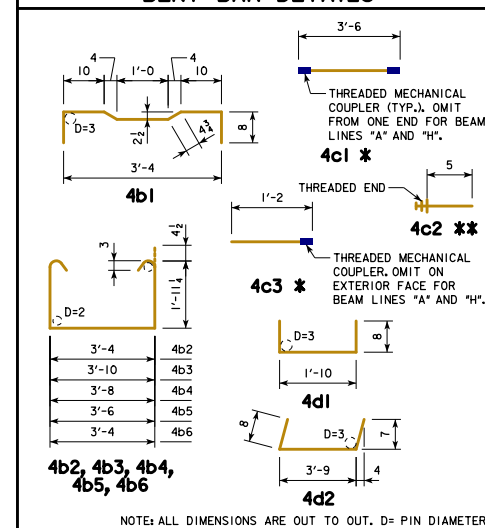
**BENT BAR DETAILS**



**EPOXY COATED REINFORCING BAR LIST**  
27" x 48" x 50'-0" PPCBB, 30° SKEW

BEAM LINE		BEAM LINES "A" AND "H"			BEAM LINES "B" THRU "G"		
BAR	SHAPE	NO.	LENGTH	WEIGHT	NO.	LENGTH	WEIGHT
4a1		4	50'-10"	136	4	50'-10"	136
4a2		1	49'-8"	33	1	49'-8"	33
4b1		71	4'-9 1/2"	227	71	4'-9 1/2"	227
4b2		45	7'-11 1/2"	239	45	7'-11 1/2"	239
4b3		4	8'-5 1/2"	23	4	8'-5 1/2"	23
4b4		2	8'-3 1/2"	11	2	8'-3 1/2"	11
4b5		2	8'-1 1/2"	11	2	8'-1 1/2"	11
4b6		2	7'-11 1/2"	11	2	7'-11 1/2"	11
4c1 *		72	3'-6"	168	72	3'-6"	168
4c2 **		2	0'-5"	21	150	0'-5"	42
4c3 *		6	1'-2"	5	6	1'-2"	5
4c4		4	3'-8"	10	4	3'-8"	10
4d1		8	3'-2"	17	8	3'-2"	17
4d2		12	5'-1"	41	12	5'-1"	41
TOTAL (LBS.)		953			974		

**BENT BAR DETAILS**



NOTES:  
\* INCLUDES MECHANICAL COUPLER(S). SEE BENT BAR DETAILS.  
\*\* SEE BENT BAR DETAILS. THE LENGTHS SHOWN DO NOT INCLUDE AN ALLOWANCE FOR THE THREADED END. BAR LENGTHS MAY NEED TO INCREASE DEPENDING ON THE MECHANICAL COUPLER ASSEMBLY USED. THE COST OF THE THREADED PORTION OF THESE BARS IS TO BE INCLUDED IN THE PRICE BID FOR THE BEAMS. THE WEIGHT OF THE THREADED END IS NOT INCLUDED IN THE QUANTITY SHOWN.

LATEST REVISION DATE

*Thomas E. M. D...all*  
APPROVED BY BRIDGE ENGINEER

**IOWADOT** Highway Division

STANDARD DESIGN - 30'-0" ROADWAY, SINGLE SPAN  
**CONCRETE BOX BEAM BRIDGES**

DECEMBER, 2016

**27" x 48" x 50'-0" PPCBB DETAILS**  
**REINFORCING BAR LIST**

**B30-44-16**