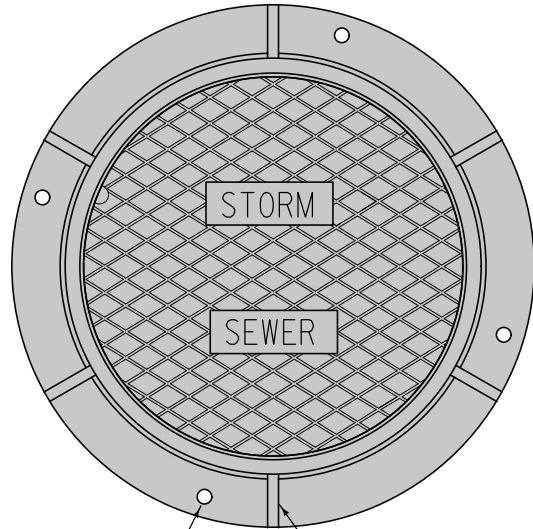


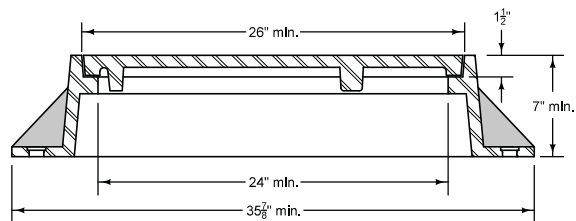
**TYPE E**

Two-piece fixed casting



Anchor Bolt Hole ① Flange (typ.)

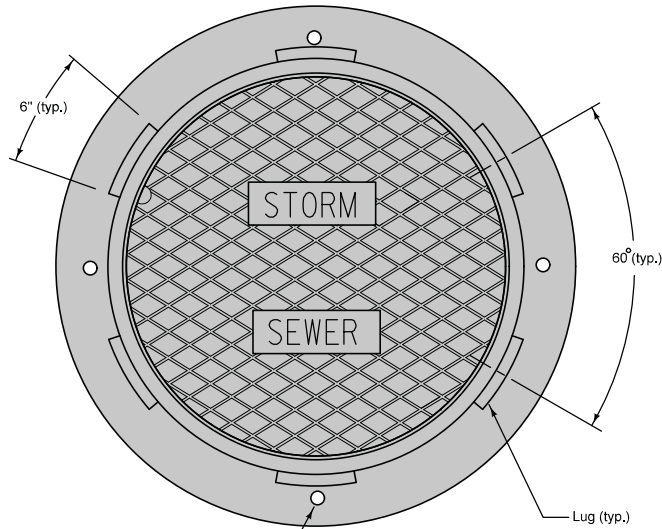
PLAN



TYPICAL SECTION

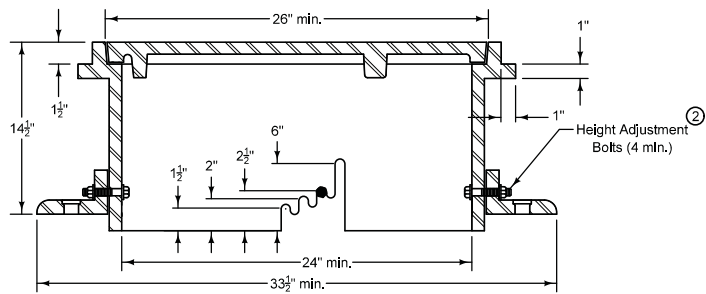
**TYPE F**

Three-piece floating casting



Anchor Bolt Hole ① Lug (typ.)

PLAN



TYPICAL SECTION

Frame Notes:  
Size and spacing of lugs and flanges may vary.

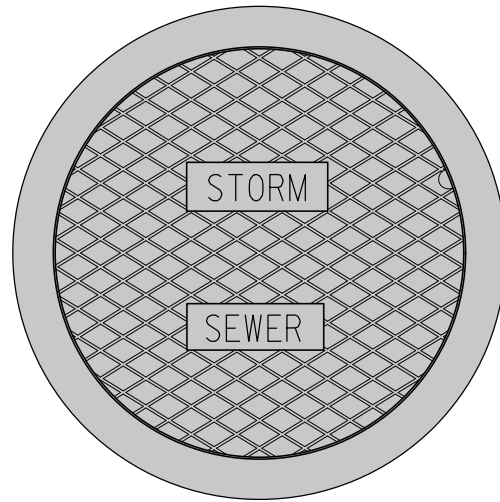
Cover Notes:  
Roughness pattern and text styles may vary.  
Minimum one concealed pickhole.

- ① When the contract documents require the frame to be attached to the structure, drill four  $\frac{7}{8}$ " diameter holes or slots, equally spaced around frame.
- ② Set casting at proper grade using one of the adjustment slots. Remove bolts upon completion of paving.

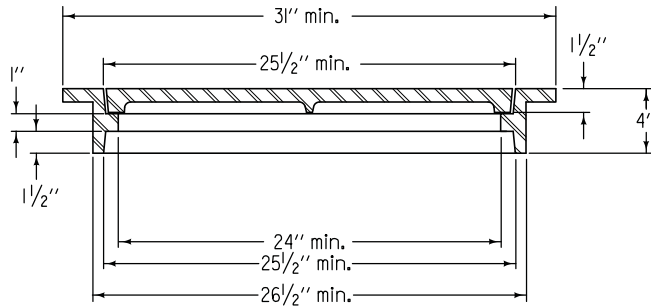
FIGURE 6010.602 SHEET 1 OF 2

		REVISION
		3   04-21-15
FIGURE 6010.602	STANDARD ROAD PLAN	<b>SW-602</b>
		SHEET 1 of 2
REVISIONS: Revised three-piece casting configuration. Modified circle note 2.		
<i>Paul D. Wigand</i> SUDAS DIRECTOR		<i>Brian Smith</i> DESIGN METHODS ENGINEER
<b>CASTINGS FOR STORM SEWER MANHOLES</b>		

TYPE G  
Two-piece fixed casting



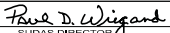
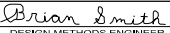


PLAN



TYPICAL SECTION

FIGURE 6010.602 SHEET 2 OF 2

 SUDAS	 IOWADOT	REVISION	
		3	04-21-15
FIGURE 6010.602	STANDARD ROAD PLAN	<b>SW-602</b>	
		SHEET 2 of 2	
<small>REVISIONS: Revised three-piece casting configuration. Modified circle note 2.</small>			
 <small>SUDAS DIRECTOR</small>		 <small>DESIGN METHODS ENGINEER</small>	
<b>CASTINGS FOR STORM SEWER MANHOLES</b>			