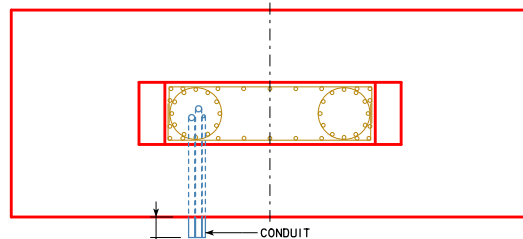


### FOUNDATION PLAN FOR LEFT TRUSS SUPPORT

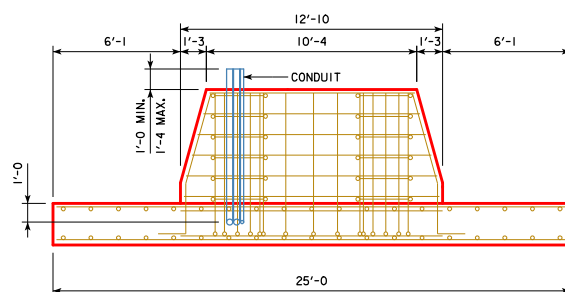
LOCATED AT MEDIAN FOR TYPICAL DESIGNS  
ANCHOR BOLT ASSEMBLIES AND SELECTED REINFORCING BARS NOT SHOWN

## TRAFFIC FLOW



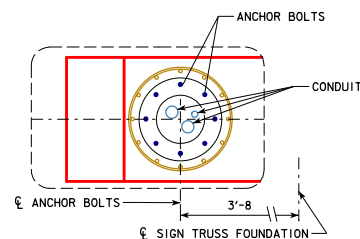
## FOUNDATION PLAN FOR RIGHT TRUSS SUPPORT

LOCATED AT OUTSIDE SHOULDER FOR TYPICAL DESIGNS  
ANCHOR BOLT ASSEMBLIES AND SELECTED REINFORCING BARS NOT SHOWN



**SIDE ELEVATION**

ANCHOR BOLT ASSEMBLIES NOT SHOWN



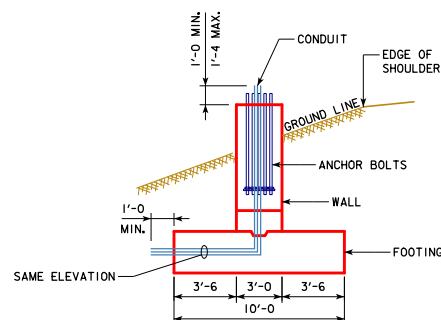
### DETAIL R

LOCATION OF CONDUIT WITHIN ANCHOR BOLT CIRCLE

STEM WALL PERIMETER REINFORCING BARS NOT SHOWN

THIS SHEET FOR DMS TRUSSES ONLY

ELECTRICAL CONDUIT IS REQUIRED IN FOUNDATIONS SUPPORTING TRUSSES WITH DYNAMIC MESSAGE SIGNS.

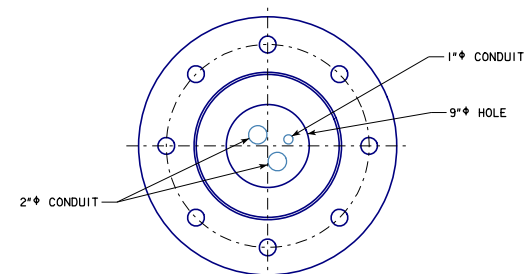


END ELEVATION

REINFORCING BARS NOT SHOWN

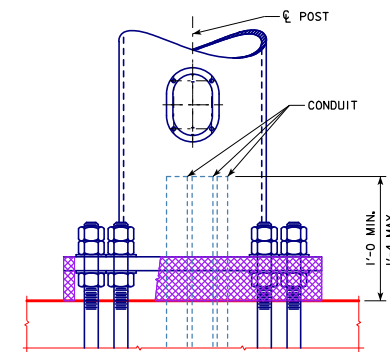
**GENERAL NOTES:**

FOR FOUNDATION SUPPORTING TRUSSES WITH DYNAMIC MESSAGE SIGNS, PLACE ONE 1" CONDUIT AND TWO 2" CONDUITS WITHIN THE ANCHOR BOLT CIRCLE CLOSEST TO THE DIRECTION OF THE APPROACHING TRAFFIC. EXTEND CONDUIT ENDS A MINIMUM OF 1'-0" ABOVE FOUNDATION WALL AND 1'-0" PAST EDGE OF FOUNDATION FOOTING ON SIDE AWAY FROM ROADWAY. CONDUIT SHALL BE PLACED IN BOTH FOUNDATIONS UNLESS OTHERWISE INDICATED ON DETAIL PROJECT PLANS. ALL CONDUIT SHALL BE SCHEDULE 40 PLASTIC.



### BASE PLATE PLAN

CONDUIT IS PRESENT ONLY  
IN POSTS WITH HAND HOLES




**BASE SIDE VIEW**

OPPOSITE OF TRAFFIC SIDE  
NOT ALL ANCHOR BOLTS SHOWN

SEE THE FOLLOWING STANDARD SHEETS FOR ELECTRICAL ACCESS DETAILS IN SUPPORT POSTS FOR DMS TRUSS DESIGNS:

STANDARD SHEET	SOST-06-11	FOR 14" $\phi$ POSTS (50'-100' TRUSS SPANS)
STANDARD SHEET	SOST-07-11	FOR 16" $\phi$ POSTS (105'-130' TRUSS SPANS)

07-17 LATEST REVISION DATE  <i>Norman E. Mc Donnell</i> APPROVED BY BRIDGE ENGINEER	 Highway Division	
	STANDARD DESIGN  <b>STEEL OVERHEAD SIGN TRUSS</b>	
	SEPTEMBER, 2011	<b>SOST-18-11</b>