

3/4"  $\phi$  HOLE WITH 3/4"  $\phi$  A325 GALVANIZED BOLT, OVERSIZED WASHERS, NUT, AND JAM NUT. DO NOT FULLY TIGHTEN NUT TO PLATE. ALLOW FOR FREE ROTATION OF BOLT.

PART #1

WASHER

GATE

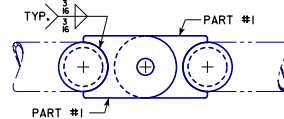
3/16"

PART #2

2"  $\phi$  STANDARD STEEL PIPE (TYP.)

**VIEW P-P**  
GATE HINGE

VIEW P-P  
GATE HINGE



THREADED ROD  
SLIDES UP/DOWN

$\frac{3}{4}" \text{ } \phi$  HOLE WITH  $\frac{1}{4}" \text{ } \phi \times 8"$   
A36 GALVANIZED THREADED ROD  
WITH WASHER, NUTS, AND JAM NUT.

3

FROM LINE  
INDICATES GATE  
POSITION IN  
OF LATCH

BACK RAIL

PART #2

PART #2

30 1/2

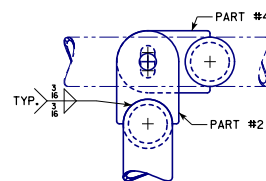
3  
8  
8

2 1/2"  $\phi \times \frac{1}{4}"$  TUBE  
(TYP.)

PART #4

**VIEW Q-Q**  
GATE LATCH WITH GATE OPEN

VIEW Q-Q  
GATE LATCH WITH GATE OPEN



Technical drawing of Part #3, showing a U-shaped component with a slotted hole. The drawing includes a side view and a top view.

**Dimensions:**

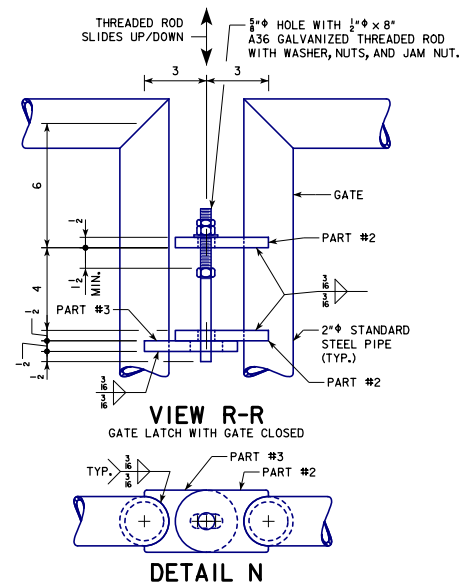
- Overall width: 3
- Radius:  $R = 1 \frac{1}{8}$
- Slot width:  $1 \frac{1}{2}$
- Slot length:  $1 \frac{1}{2}$
- Slot depth:  $1 \frac{1}{2} \times \frac{9}{16}$  LONG SLOTTED HOLE
- Overall height: 2

**PART #3**

**PART #4**


Diagram of a 1/2"  $\phi$  A36 ROD. The total length is 8 inches. A section of 5 inches is threaded, labeled "THREAD".

1/2"  $\phi$  A36 ROD



VIEW R-R  
E LATCH WITH GATE CLOSED

DETAIL N

07-17 LATEST REVISION DATE  <i>Norman E. McQuinn</i> APPROVED BY BRIDGE ENGINEER	 <b>IOWA DOT</b> Highway Division	
	STANDARD DESIGN  <b>STEEL OVERHEAD SIGN TRUSS</b>  SEPTEMBER, 2011	
	<b>DMS RUNWAY GATE DETAILS</b>  50'-130' SPANS	<b>SOST-14-11</b>