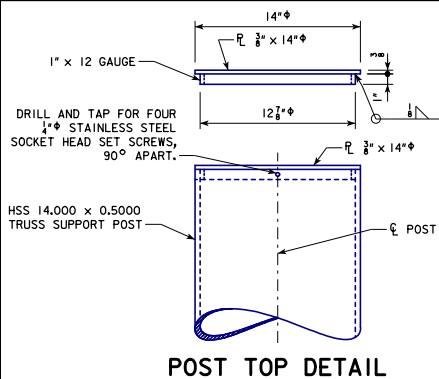
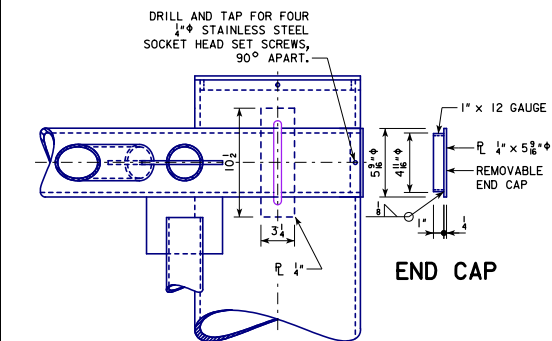


REVISIONS 07-17 - MODIFIED NOTES, CORRECTED DEPICTIONS OF VIEWS D-D AND E-E TO PROPERLY COINCIDE WITH DETAILS F AND G.
STEELOVERHEADS\GNTRUSS.DGN - SOST-09-11 - THIS SHEET ISSUED 09-11.

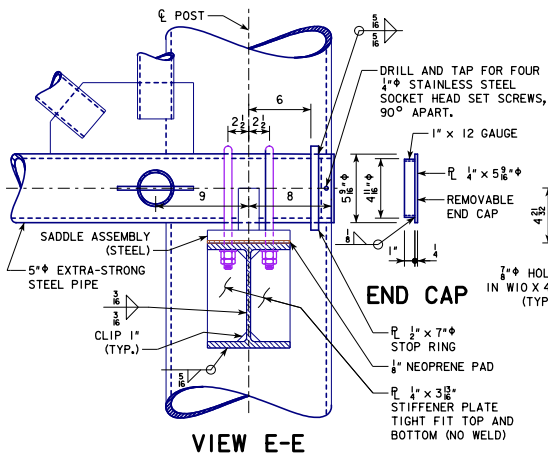


POST TOP DETAIL

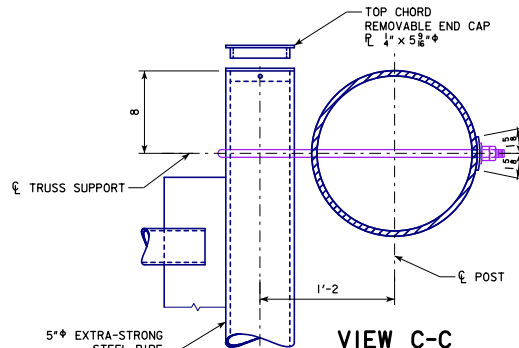


END CAP

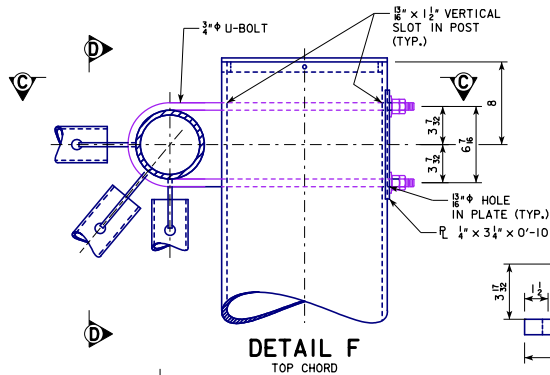
VIEW D-D



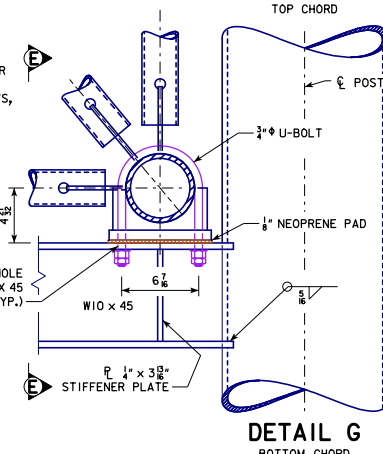
VIEW E-E



VIEW C-C

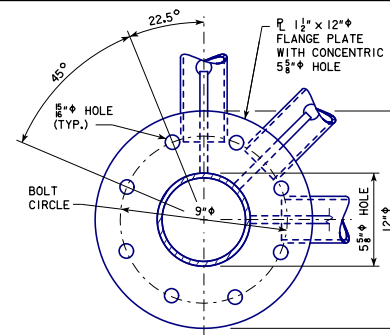


DETAIL F

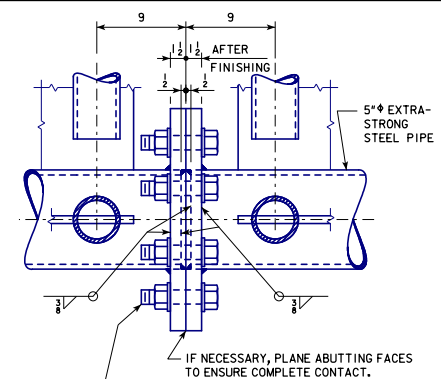


DETAIL G

SOME HIDDEN LINES
NOT SHOWN FOR CLARITY



CHORD SPLICE



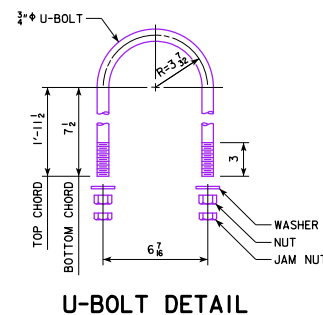
IF NECESSARY, PLANE ABUTTING FACES
TO ENSURE COMPLETE CONTACT.

SECURE PROPER ALIGNMENT AFTER
FINISHING, THEN WELD FLANGE PLATES
TO CHORD MEMBERS.

SADDLE END VIEW


SADDLE PLAN VIEW

SADDLE SIDE VIEW



U-BOLT DETAIL

SEE STANDARD SHEET SOST-06-11 FOR LOCATIONS OF DETAILS F AND G.

07-17 LATEST REVISION DATE	<i>Norman E. McQuinn</i> APPROVED BY BRIDGE ENGINEER	 IOWA DOT Highway Division	
		STANDARD DESIGN	
		STEEL OVERHEAD SIGN TRUSS	
		SEPTEMBER, 2011	
		TRUSS SUPPORT AND CHORD SPLICE DETAILS 50'-100' SPANS	SOST-09-11