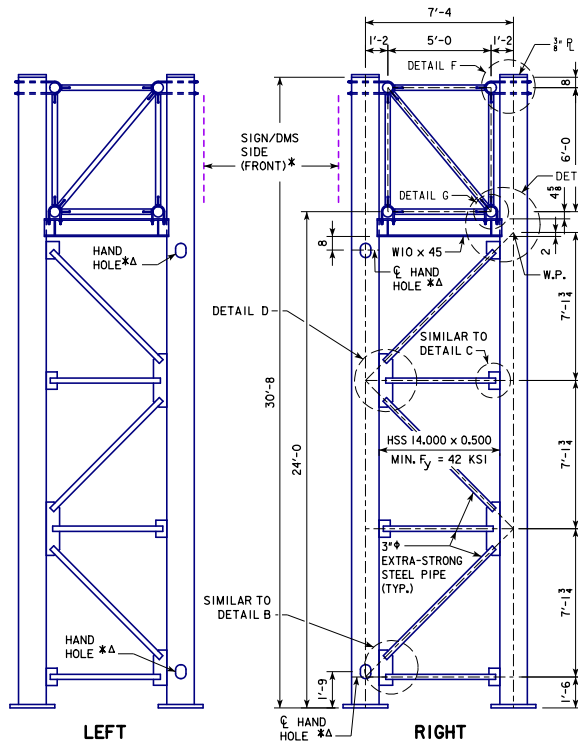
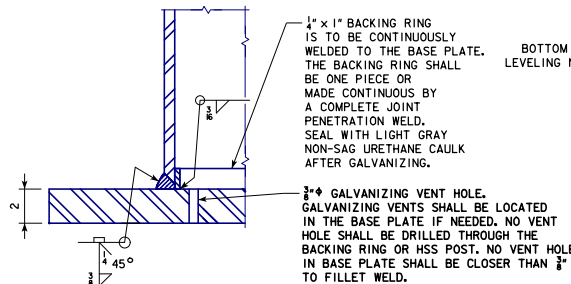


REVISION: 07-17 - MODIFIED NOTES, CHANGED CALLOUT "DETAIL D" WAS "SIMILAR TO DETAIL D" TO CONFORM TO CHANGE OF DETAIL D ON SOST-08-11. ADDED ΔΔ TO 1" CONDUIT CALLOUTS.
 IN "BASE SIDE VIEW" ADDED "JAM NUT" CALLOUTS.
 STEEL OVERHEAD SIGN TRUSS - SOST-06-11 - THIS SHEET ISSUED 09-11.

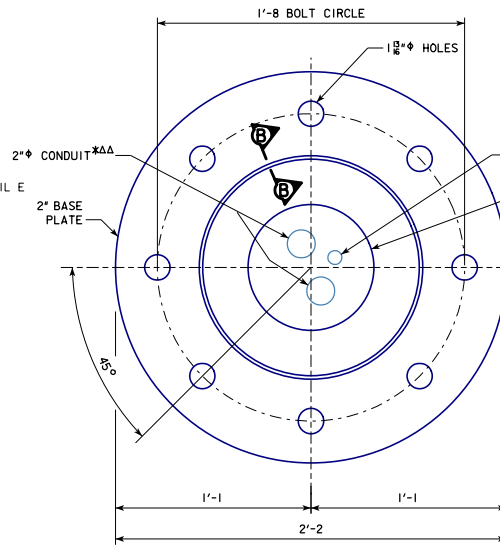


END VIEW OF TRUSS SUPPORTS

Δ - HAND HOLES SHALL BE LOCATED ONLY IN POSTS THAT ARE CLOSEST TO DYNAMIC MESSAGE SIGN AND BE POSITIONED ON SIDE OPPOSITE TRAFFIC.

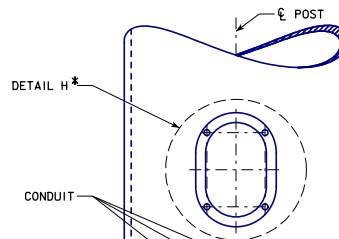


SECTION B-B



BASE PLATE PLAN

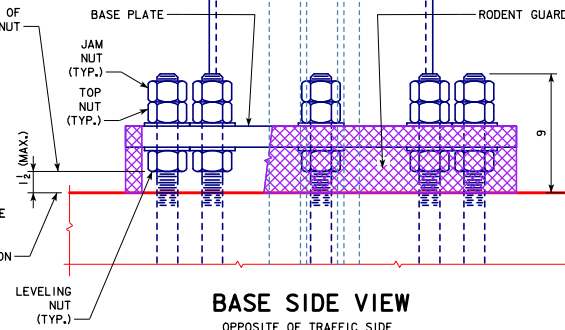
ΔΔ - CONDUIT IS PRESENT ONLY IN POSTS WITH HAND HOLES.



THE RODENT GUARD SHALL BE PLACED AROUND THE BASE PLATE.

THE RODENT GUARD IS STAINLESS STEEL STANDARD GRADE WIRE CLOTH, 1/4" MAXIMUM OPENING WITH A MINIMUM WIRE DIAMETER OF AWG NO. 16 WITH A MINIMUM 2" LAP.

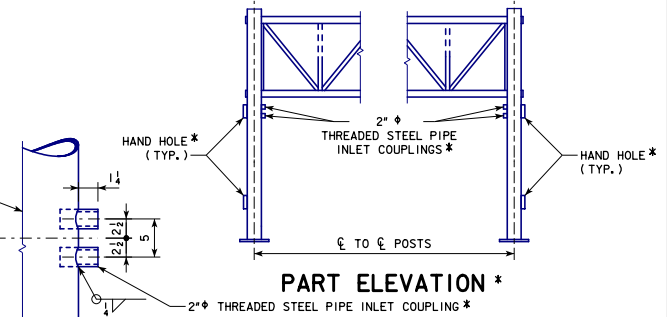
SECURE WIRE CLOTH TO BASE PLATE AFTER ERECTION WITH 3/4" STAINLESS STEEL BANDING. THE RODENT GUARD SHALL NOT EXTEND ABOVE THE TOP OF THE BASE PLATE.



BASE SIDE VIEW

OPPOSITE OF TRAFFIC SIDE

ELECTRICAL INLET *



PART ELEVATION *

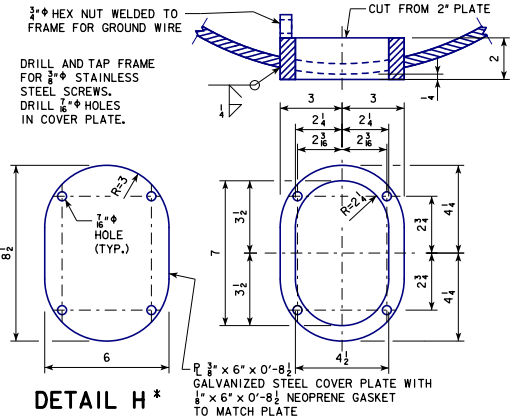
*FOR DMS TRUSSES ONLY

HAND HOLES, CONDUIT, AND PIPE INLET COUPLINGS ARE TO BE INCLUDED ON DMS TRUSS DESIGNS ONLY. SEE STANDARD SHEET SOST-18-11 FOR FOUNDATION CONDUIT LOCATION DETAILS.

HAND HOLES AND ELECTRICAL INLET HOLES SHALL BE LOCATED IN BOTH TRUSS SUPPORTS UNLESS OTHERWISE INDICATED ON DETAIL PROJECT PLANS. LOCATE HOLES ONLY IN POSTS THAT ARE CLOSEST TO DYNAMIC MESSAGE SIGN.

THREADED STEEL PIPE INLET COUPLINGS ARE TO BE PLACED OPPOSITE TO UPPER HAND HOLE ON POST. COUPLINGS SHALL BE FITTED WITH STANDARD PLUGS UNTIL CONDUIT IS INSTALLED.

ALL CONDUIT SHALL BE SCHEDULE 40 PLASTIC.



DETAIL H *

SEE STANDARD SHEET SOST-08-11 FOR DETAILS B, C, D AND E.

SEE STANDARD SHEET SOST-09-11 FOR DETAILS F AND G.

07-17 LATEST REVISION DATE Approved by Bridge Engineer [Signature]		
	STANDARD DESIGN	
	STEEL OVERHEAD SIGN TRUSS	
	SEPTEMBER, 2011	
SUPPORT POST BASE AND DMS ELECTRICAL ACCESS DETAILS		SOST-06-11
50'-100' SPANS		