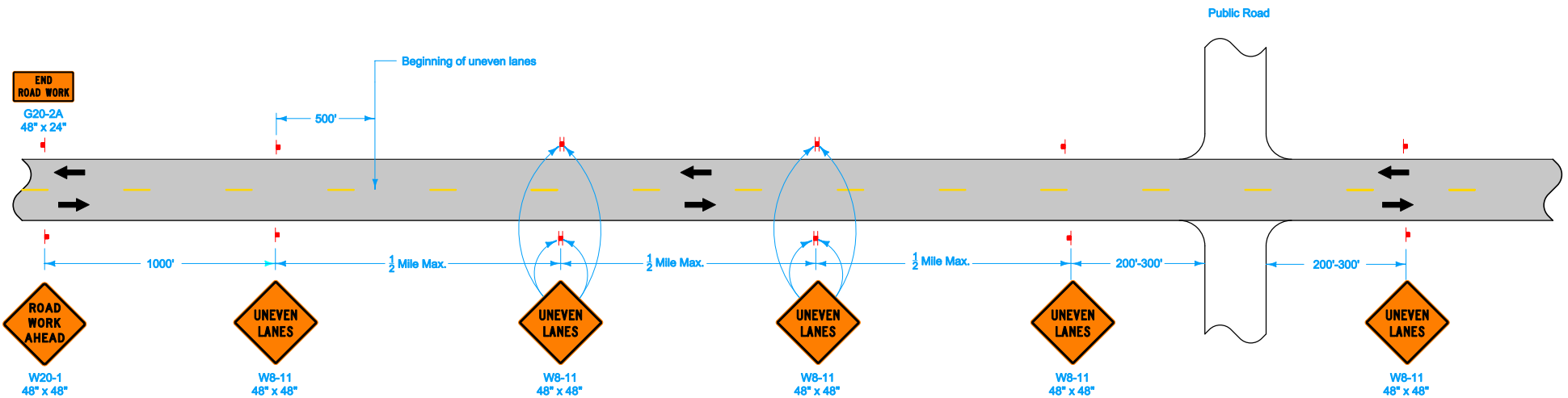
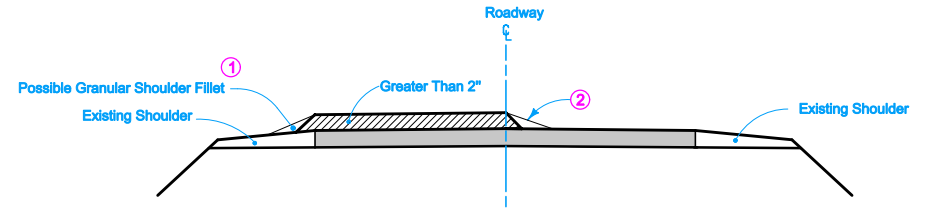
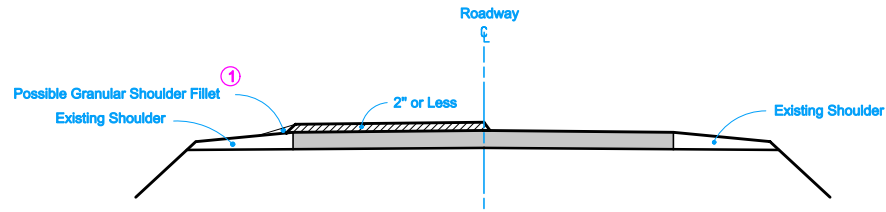


DESIGN LIFT THICKNESSES 2" OR LESS

DESIGN LIFT THICKNESSES GREATER THAN 2" (WITH $\frac{1}{2}$ " FILLET)



LEGEND

← Direction of Traffic

↑ Traffic Sign

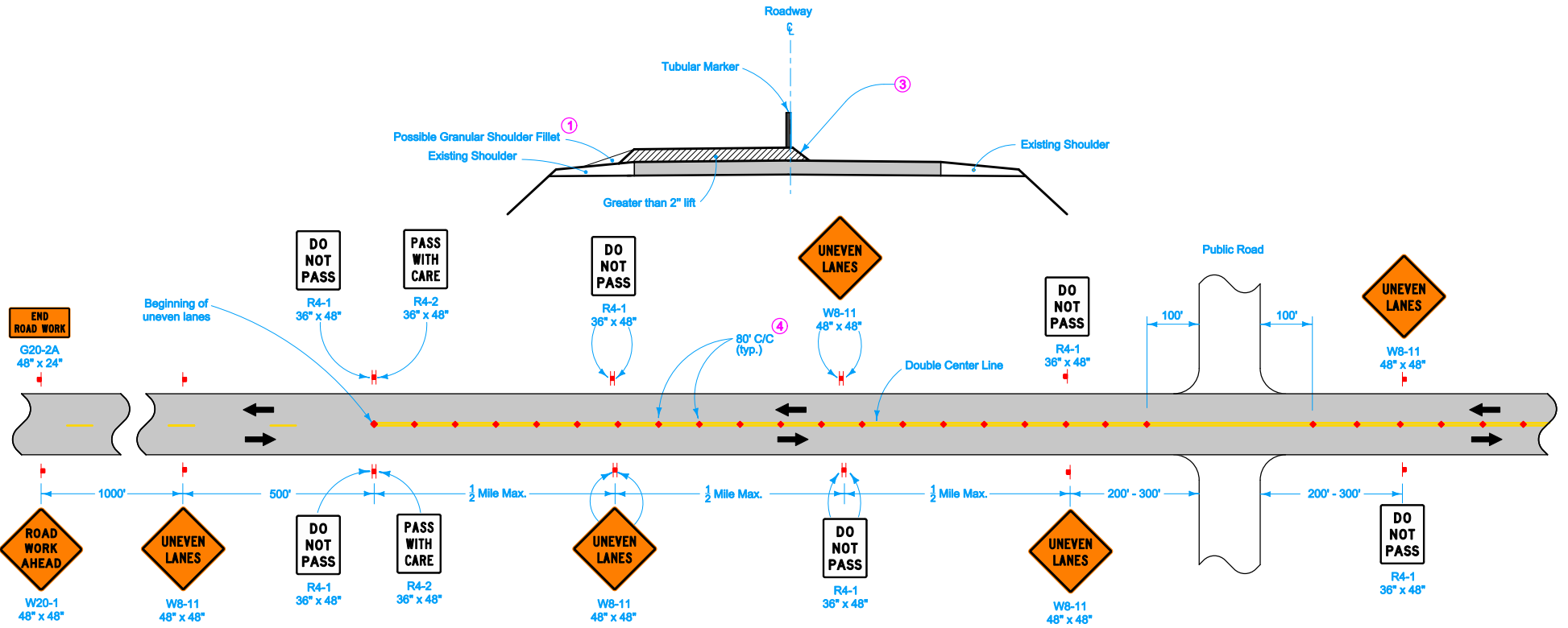
- ① Shoulder Fillet: Refer to Standard Specification 1107 and Safety Edge specifications.
- ② Centerline fillet may be notched wedge, Safety Edge, or a temporary 3:1 HMA fillet.

Possible Contract Items:
Pavement Marking Items
Traffic Control

Possible Tabulation:
108-22

<p>Iowa Department of Transportation</p> <p>STANDARD ROAD PLAN</p> <p>REVISIONS: Added Detail 9018 to new page 3.</p> <p><i>Deanna Mifflin</i> APPROVED BY DESIGN METHODS ENGINEER</p>	REVISION 3 04-19-11
	TC-282 SHEET 1 of 3
<p>UNEVEN LANES</p>	

DESIGN LIFT THICKNESSES GREATER THAN 2" (WITHOUT ϕ FILLET)



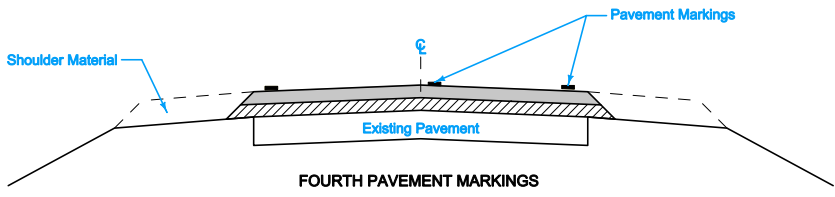
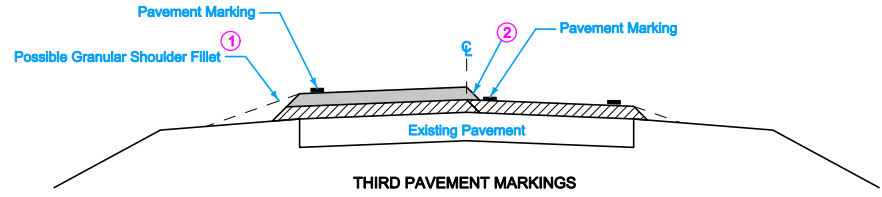
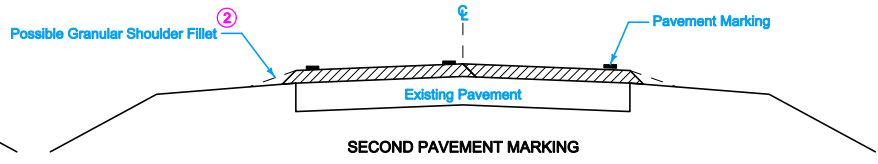
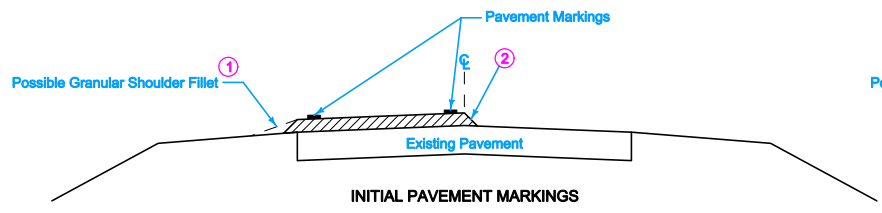
"No-Passing" zones shall not exceed 2.5 miles for ADT less than 2500 vpd or 2.0 miles for ADT from 2500 to 5000 vpd.

- ① Shoulder Fillet: Refer to Standard Specification 1107 and Safety Edge specifications.
- ③ Typical 1:1 taper.
- ④ Spacing = 40 feet where horizontal curve radius is less than 1000 feet.

LEGEND


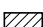
- ← Direction of Traffic
- ↑ Traffic Sign
- ♦ Tubular Marker


<p>Iowa Department of Transportation</p>	REVISION
	3 04-19-11
STANDARD ROAD PLAN	TC-282
REVISIONS: Added Detail 9018 to new page 3.	
<p>APPROVED BY DESIGN METHODS ENGINEER</p>	
UNEVEN LANES	



PAVEMENT MARKING SEQUENCE

- ① Shoulder Fillet: Refer to Standard Specification 1107 and Safety Edge specifications.
- ② Centerline fillet may be notched wedge, Safety Edge, or a temporary 3:1 HMA fillet.

LEGEND	
	Surface Course
	Intermediate Course

 Iowa Department of Transportation	REVISION
	3 04-19-11
STANDARD ROAD PLAN	TC-282
SHEET 3 of 3	
<small>REVISIONS: Added Detail 9018 to new page 3.</small>	
<i>Deanna Mifflin</i> <small>APPROVED BY DESIGN METHODS ENGINEER</small>	

UNEVEN LANES