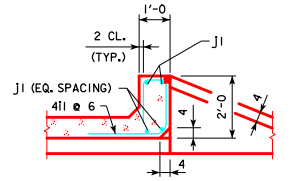
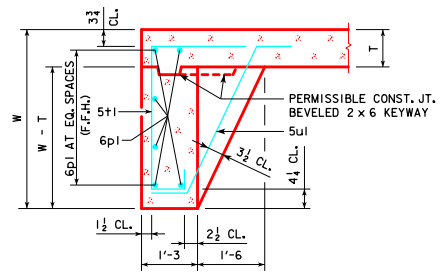


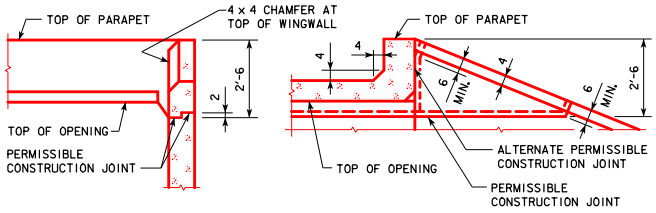
REVISED 12-2016; ADDED CURTAIN WALL CLASS 20 EXCAVATION DETAIL. ENGLISH REVISIONS IN SINGLE CULVERTS.DGN - PWH 30-2-12 - THIS SHEET ISSUED 04-12.



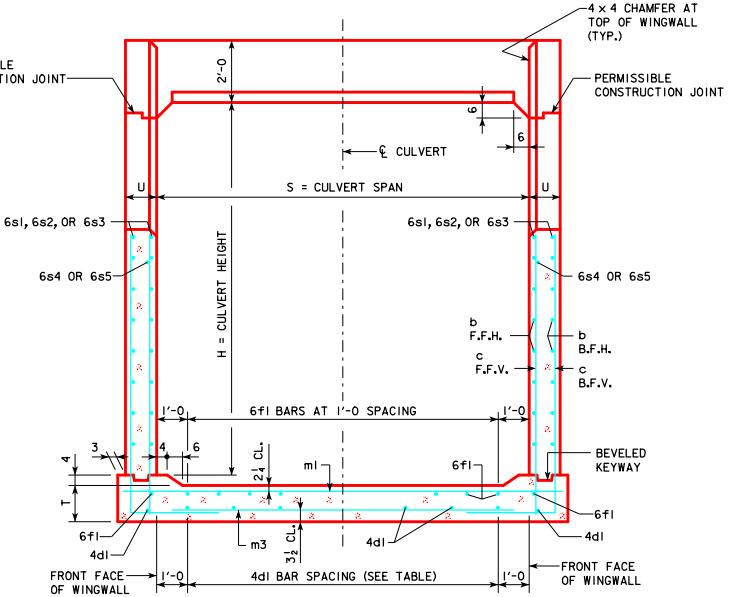
**SECTION THRU PARAPET**



**SECTION THRU CURTAIN WALL**

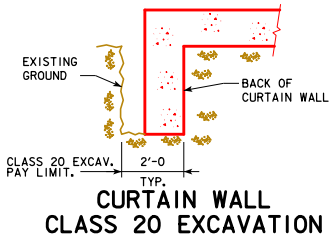


**TOP OF WINGWALL DETAILS**

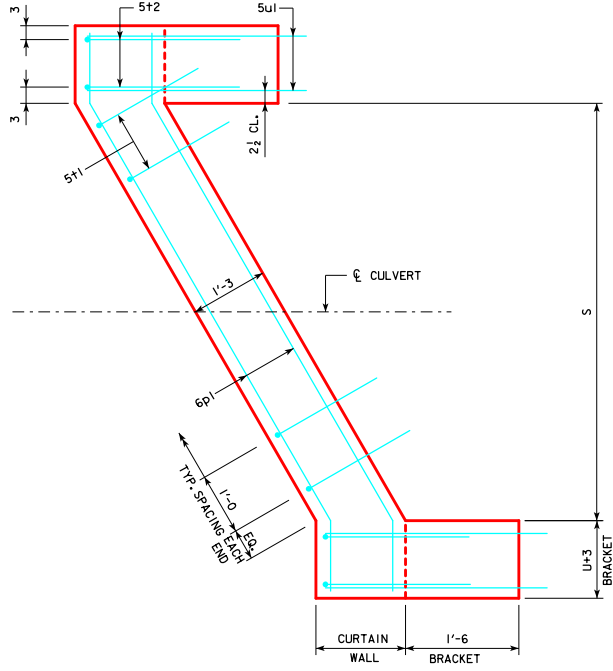


**TYPICAL CROSS SECTION - THRU HEADWALL**

4d1 BAR SPACING		
SPAN	SPACING	NO. OF BARS
5'-0"	2 SPA. AT 1'-6"	5
6'-0"	3 SPA. AT 1'-4"	6
8'-0"	4 SPA. AT 1'-6"	7
10'-0"	6 SPA. AT 1'-4"	9
12'-0"	8 SPA. AT 1'-3"	11



**CURTAIN WALL CLASS 20 EXCAVATION**



**CURTAIN WALL DETAIL - PLAN VIEW**

- NOTES:**
- SEE DRAWING RCB-G1-12 AND RCB-G2-12 FOR GENERAL NOTES, SPECIFICATIONS, AND DESIGN STRESSES.
  - FOR DIMENSION TABLE SEE DRAWING PWH 30-1-12.

12-2016 LATEST REVISION DATE APPROVED BY BRIDGE ENGINEER <i>Thomas E. McQuinn</i>	
	STANDARD DESIGN - SINGLE REINFORCED CONCRETE BOX CULVERTS <b>PARALLEL WING HEADWALLS</b> APRIL, 2012
<b>CROSS SECTION DETAILS</b> 30° SKEW	
<b>PWH 30-2-12</b>	