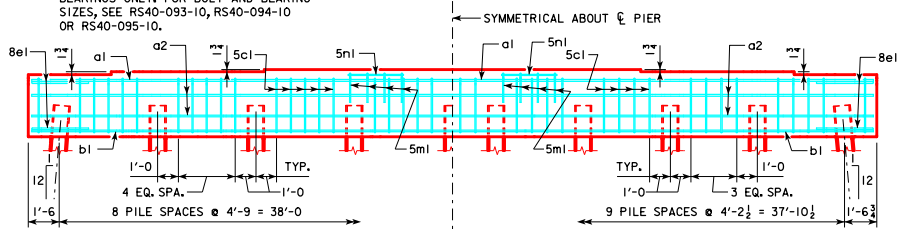


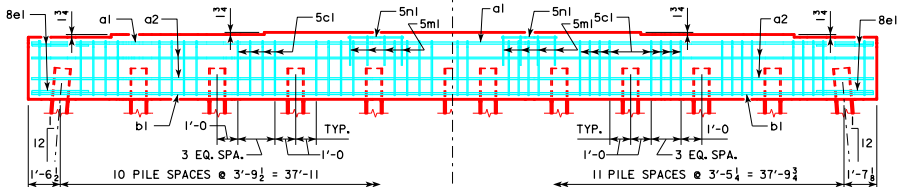
**TYPICAL PLAN**

NOTE:  
ANCHOR BOLTS REQUIRED FOR FIXED PIER BEARINGS ONLY. FOR BOLT AND BEARING SIZES, SEE RS40-093-10, RS40-094-10 OR RS40-095-10.



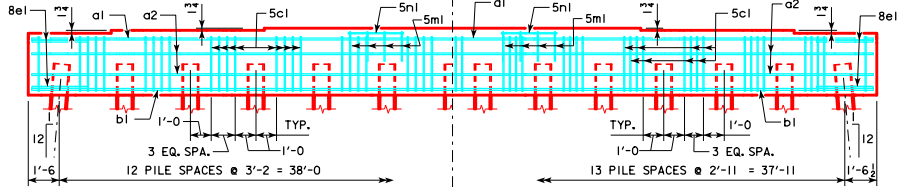
**9 PILE BENT**

**10 PILE BENT**



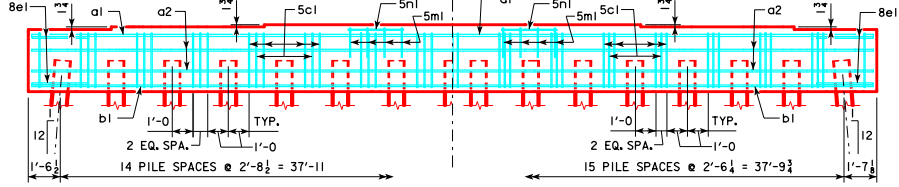
**11 PILE BENT**

**12 PILE BENT**



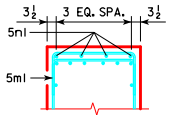
**13 PILE BENT**

**14 PILE BENT**

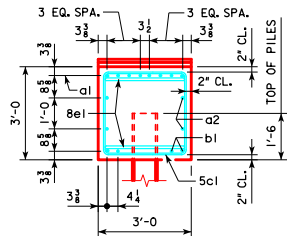


**15 PILE BENT**

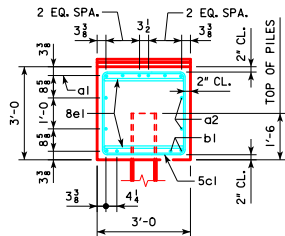
**16 PILE BENT**



**5m1 & 5n1 BAR LAYOUT**



**VIEW A-A FOR 9 & 10 PILE BENTS**



**VIEW A-A FOR 11, 12, 13, 14, 15 & 16 PILE BENTS**

LATEST REVISION DATE	 APPROVED BY BRIDGE ENGINEER	 STANDARD DESIGN - 40' ROADWAY, 3 SPAN BRIDGES <b>ROLLED STEEL BEAM BRIDGES</b> JUNE, 2010	
		<b>PILE BENT PIERS</b>	<b>RS40-096-10</b>
		0° SKEW	