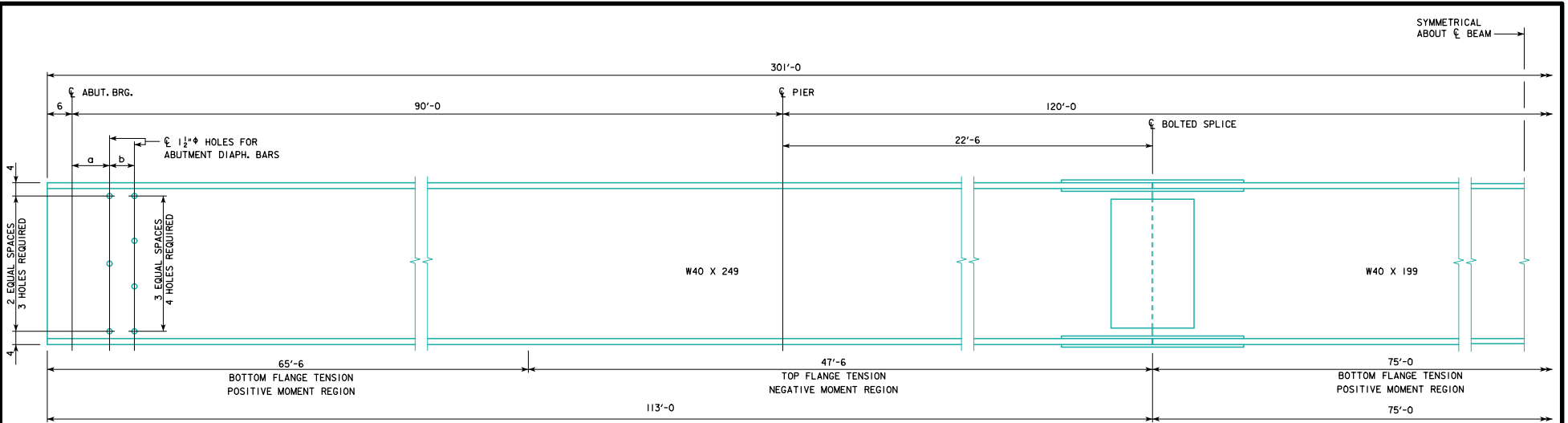
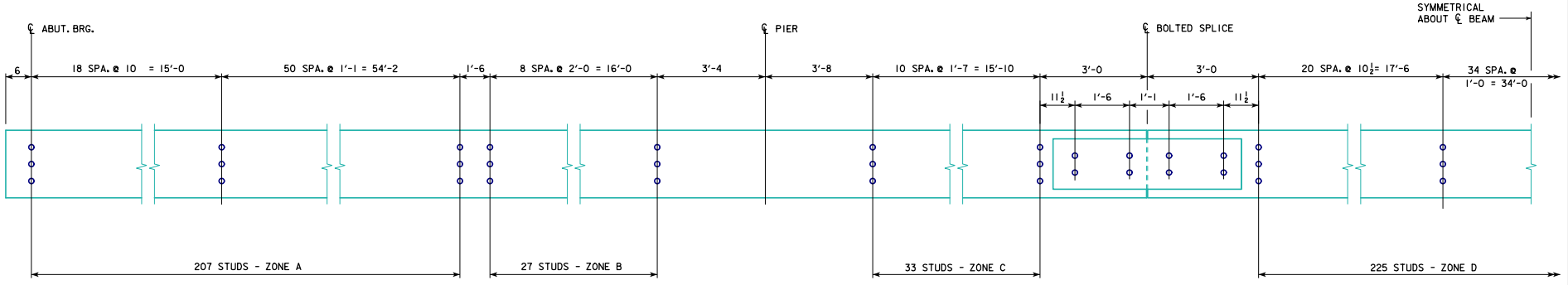


REVISED 02-14 - A STUD HEIGHT OF 4" WAS ADDED TO THE \* NOTE.  
REVISED 10-2016 - ADDED 8 SHEAR STUDS AT "CENTERLINE OF BOLTED SPLICE" LOCATION BETWEEN "ZONE C & D". ADDED "SHEAR STUD ON SPLICE PLATE DETAILS" SHOWING 2 STUDS PER ROW.

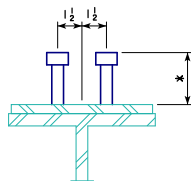


**BEAM ELEVATION**

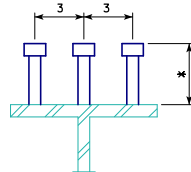


**SHEAR STUD SPACING**

\* NOTE: STUD HEIGHTS (3½", 4" OR 5") FOR THE LOCATIONS SHOWN SHALL BE DETERMINED BY THE DESIGNER. ON "MISCELLANEOUS DETAILS 300'-0 BRIDGE" SHEET, STUD HEIGHTS CAN BE IDENTIFIED BY THE DESIGNER IN A TABLE CORRESPONDING TO THE ZONES LISTED ON THIS SHEET.



**2 STUDS PER ROW  
SHEAR STUD ON  
SPLICE PLATE DETAILS**  
NOTE : ALL STUDS TO BE 7/8"φ



**3 STUDS PER ROW  
SHEAR STUD DETAILS**  
NOTE : ALL STUDS TO BE 7/8"φ

SKEW	a (IN)	b (IN)
0°	9	6
10°	9 1/8	6 1/8
20°	9 3/8	6 3/8
30°	10 1/8	6 1/2
45°	12 1/2	8 1/2

10-2016  
LATEST REVISION DATE  
*Thomas E. McQuinn*  
APPROVED BY BRIDGE ENGINEER

**IOWADOT** Highway Division  
STANDARD DESIGN - 40' ROADWAY, 3 SPAN BRIDGES  
**ROLLED STEEL BEAM BRIDGES**  
JUNE, 2010

---

**BEAM PLAN AND ELEVATION  
300'-0 BRIDGE** **RS40-078-10**