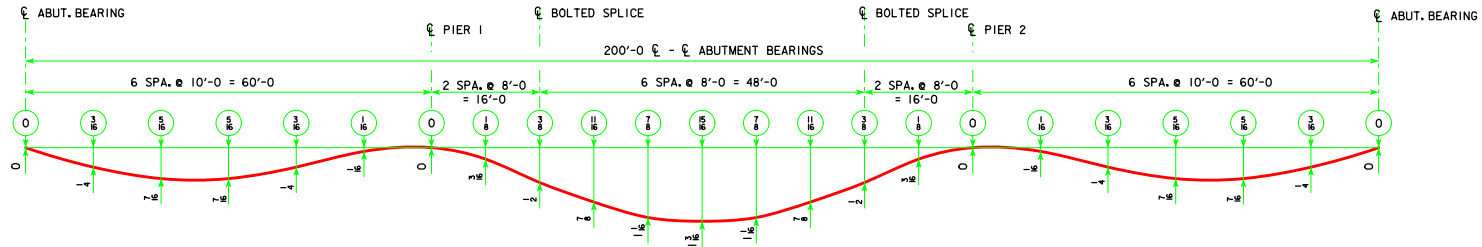


REVISED 04-2014 - MOVED THE REACTION LIVE LOAD IMPACT COLUMN NUMBERS IN THE MOMENT ROW TO THE REACTION ROW.



DEAD LOAD DEFLECTION DIAGRAM

- NOTES:
 1. ENCIRCLED NUMBERS INDICATE ANTICIPATED DEFLECTION DUE TO CONCRETE ONLY.
 2. DEFLECTIONS ARE IN INCHES.

		MOMENT - foot-kips						REACTION - kips					
LOAD NAME	LOAD - k/ft	POSITIVE MOMENT				NEGATIVE MOMENT		REACTION					
		0.4 PT. END SPAN		0.5 PT. CENTER SPAN		PIER	PIER	ABUTMENT	ABUTMENT	PIER	PIER		
		INTERIOR	EXTERIOR	INTERIOR	EXTERIOR	INTERIOR	EXTERIOR	INTERIOR	EXTERIOR	INTERIOR	EXTERIOR		
DC1	0.74*	0.72*	209	196	249	231	470	438	21	20	72	67	
DC2	0.14	0.14	36	36	51	51	63	63	3	3	11	11	
DW	0.15	0.15	38	38	53	53	65	66	3	3	11	11	
LIVE LOAD + IMPACT HL-93	DISTRIBUTION FACTOR	MOMENT	MOMENT										
		0.629	0.681	745	806	792	935	549	623	-	-	-	-
		REACTION	REACTION							75	66	111	98
TOTAL									102	92	205	187	

* LOAD VALUES DO NOT INCLUDE GIRDER WEIGHT.
 MOMENT AND REACTION VALUES DO INCLUDE GIRDER WEIGHT.
 MOMENTS AND REACTIONS SHOWN ARE UNFACTORED.

04-2014 LATEST REVISION DATE	 APPROVED BY BRIDGE ENGINEER	 STANDARD DESIGN - 40' ROADWAY, 3 SPAN BRIDGES ROLLED STEEL BEAM BRIDGES JUNE, 2010
		BEAM DEFLECTIONS 200'-0 BRIDGE
		RS40-063-10