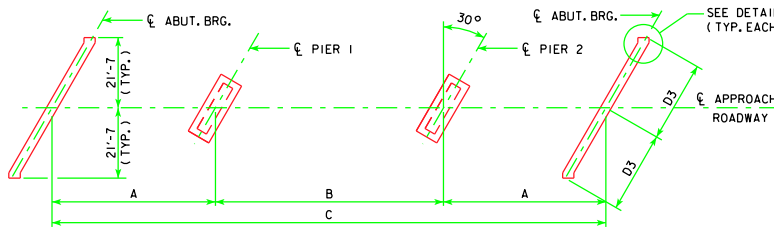
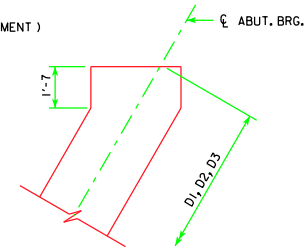


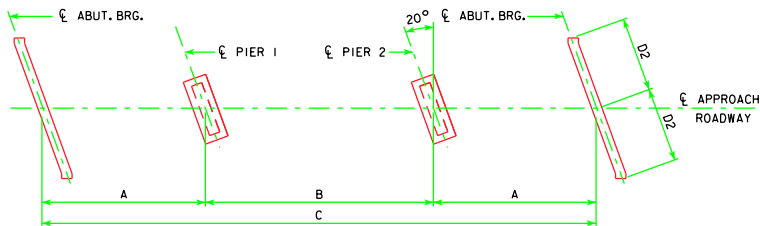
30° SKEW (R.A.)



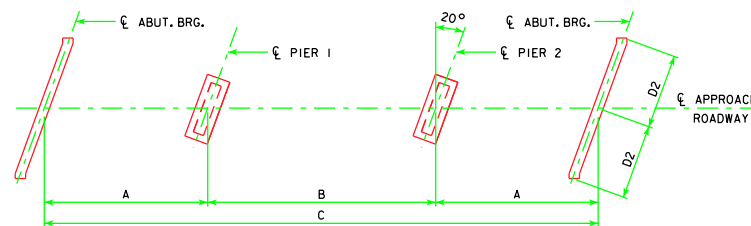
30° SKEW (L.A.)



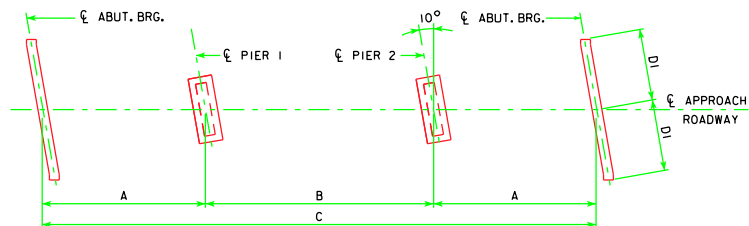
DETAIL A  
DIMENSION D1, D2, D3 APPLIES AT LOCATION SHOWN ALONG THE ABUTMENT BEARING (TYP.)



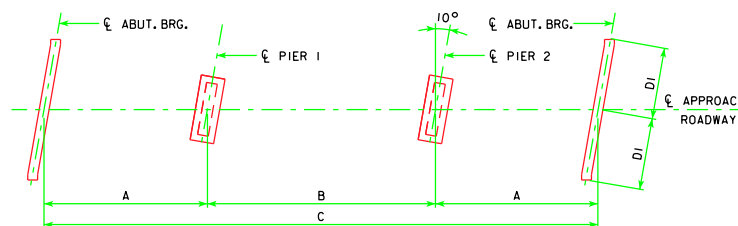
20° SKEW (R.A.)



20° SKEW (L.A.)

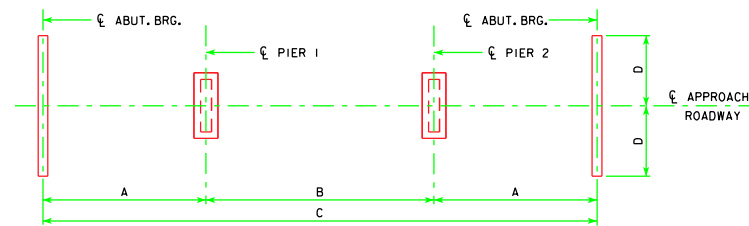


10° SKEW (R.A.)



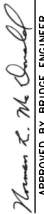

10° SKEW (L.A.)

- NOTES:  
1. ALL SUBSTRUCTURE UNITS ARE CONSTRUCTED PARALLEL TO THE SKEW INDICATED FOR EACH BRIDGE.  
2. R.A. = RIGHT AHEAD  
L.A. = LEFT AHEAD



0° SKEW

BEAM BRIDGE STANDARDS							
LENGTH	A	B	C	0°SKEW D	10°SKEW D1	20°SKEW D2	30°SKEW D3
160'-0"	48'-0"	64'-0"	160'-0"	21'-7"	21'-11"	22'-11 3/8"	24'-11 1/8"
180'-0"	54'-0"	72'-0"	180'-0"	21'-7"	21'-11"	22'-11 3/8"	24'-11 1/8"
200'-0"	60'-0"	80'-0"	200'-0"	21'-7"	21'-11"	22'-11 3/8"	24'-11 1/8"
220'-0"	66'-0"	88'-0"	220'-0"	21'-7"	21'-11"	22'-11 3/8"	24'-11 1/8"
240'-0"	72'-0"	96'-0"	240'-0"	21'-7"	21'-11"	22'-11 3/8"	24'-11 1/8"
260'-0"	78'-0"	104'-0"	260'-0"	21'-7"	21'-11"	22'-11 3/8"	24'-11 1/8"
280'-0"	84'-0"	112'-0"	280'-0"	21'-7"	21'-11"	22'-11 3/8"	24'-11 1/8"
300'-0"	90'-0"	120'-0"	300'-0"	21'-7"	21'-11"	22'-11 3/8"	24'-11 1/8"
320'-0"	96'-0"	128'-0"	320'-0"	21'-7"	21'-11"	22'-11 3/8"	24'-11 1/8"

LATEST REVISION DATE	 APPROVED BY BRIDGE ENGINEER	 <b>Iowa Department of Transportation</b> Highway Division	STANDARD DESIGN - 40' ROADWAY, 3 SPAN BRIDGES <b>ROLLED STEEL BEAM BRIDGES</b> JUNE, 2010
			SUBSTRUCTURE LAYOUTS