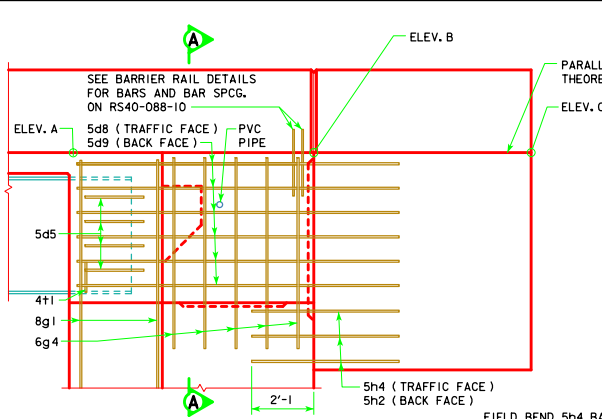


PART LONGITUDINAL SECTION NEAR GUTTER

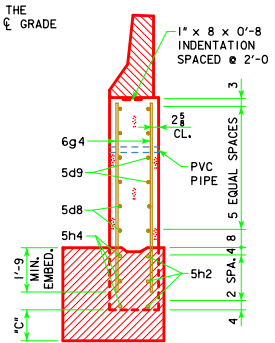
NOTE:
PLUG 3" PVC PIPE WITH EXPANDING FOAM PRIOR TO BACKFILLING BEHIND ABUTMENTS.

NOTE:
FOR ELEVATION A, ELEVATION B, ELEVATION C AND DIMENSION C SEE "MISCELLANEOUS DETAILS" FOR THE APPROPRIATE LENGTH BRIDGE.

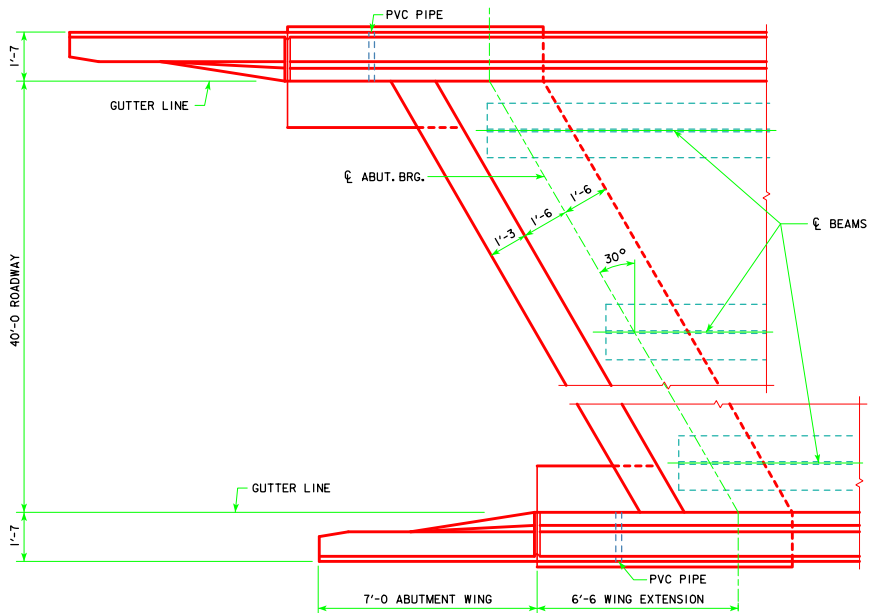


PART END VIEW AT ABUTMENT

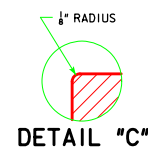
FIELD BEND 5h4 BAR AS NECESSARY TO AVOID PILE IN ABUTMENT WING.



SECTION A-A



PART PLAN
(STEEL DIAPHRAGMS NOT SHOWN)



REVISED 01-12 - ADDED FIELD BEND 5h4 BAR TO AVOID PILE IN ABUTMENT WING NOTE.

01-12 LATEST REVISION DATE <i>Norman E. Mc Donald</i> APPROVED BY BRIDGE ENGINEER	
	STANDARD DESIGN - 40' ROADWAY, 3 SPAN BRIDGES ROLLED STEEL BEAM BRIDGES JUNE, 2010
	LONGITUDINAL SECTION 30° SKEW
RS40-026-10	