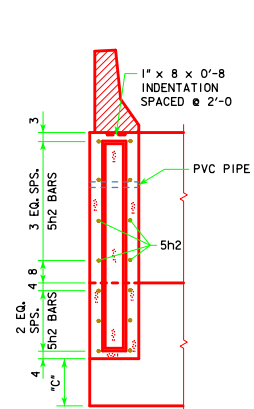
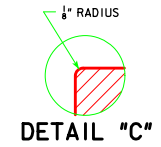


**PART LONGITUDINAL SECTION NEAR GUTTER**

**PART END VIEW AT ABUTMENT**



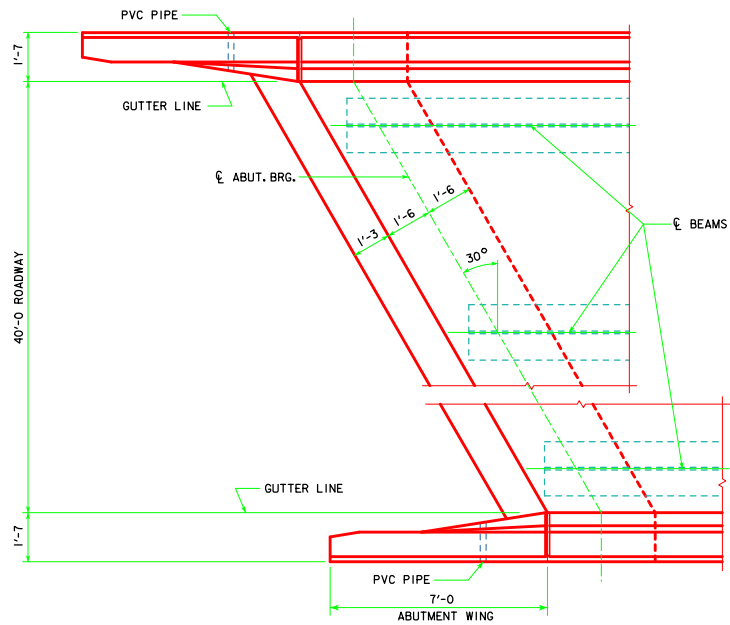
**SECTION A-A**



**DETAIL "C"**

NOTE:  
PLUG 3" PVC PIPE WITH EXPANDING  
FOAM PRIOR TO BACKFILLING BEHIND  
ABUTMENTS.

NOTE:  
FOR ELEVATION A, ELEVATION B AND  
DIMENSION C SEE "MISCELLANEOUS DETAILS"  
FOR THE APPROPRIATE LENGTH BRIDGE.



**PART PLAN**  
(STEEL DIAPHRAGMS NOT SHOWN)

LATEST REVISION DATE	 APPROVED BY BRIDGE ENGINEER	 STANDARD DESIGN - 40' ROADWAY, 3 SPAN BRIDGES <b>ROLLED STEEL BEAM BRIDGES</b> OCTOBER, 2014	
		<b>LONGITUDINAL SECTION</b> <b>30° SKEW</b>	<b>RS40-025-14</b>