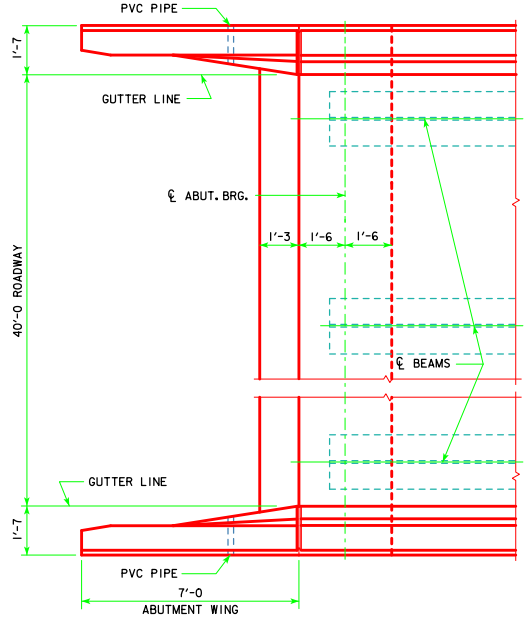


NOTE:
 PLUG 3" PVC PIPE WITH EXPANDING
 FOAM PRIOR TO BACKFILLING BEHIND
 ABUTMENTS.

NOTE:
 FOR ELEVATION A, ELEVATION B AND
 DIMENSION C SEE "MISCELLANEOUS DETAILS"
 FOR THE APPROPRIATE LENGTH BRIDGE.



PART PLAN
 (STEEL DIAPHRAGMS NOT SHOWN)

LATEST REVISION DATE	 APPROVED BY BRIDGE ENGINEER	 STANDARD DESIGN - 40' ROADWAY, 3 SPAN BRIDGES ROLLED STEEL BEAM BRIDGES OCTOBER, 2014	
		LONGITUDINAL SECTION 0° SKEW	RS40-019-14