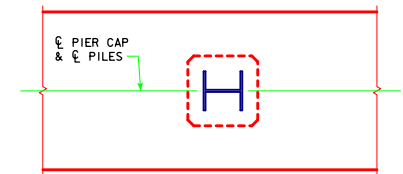
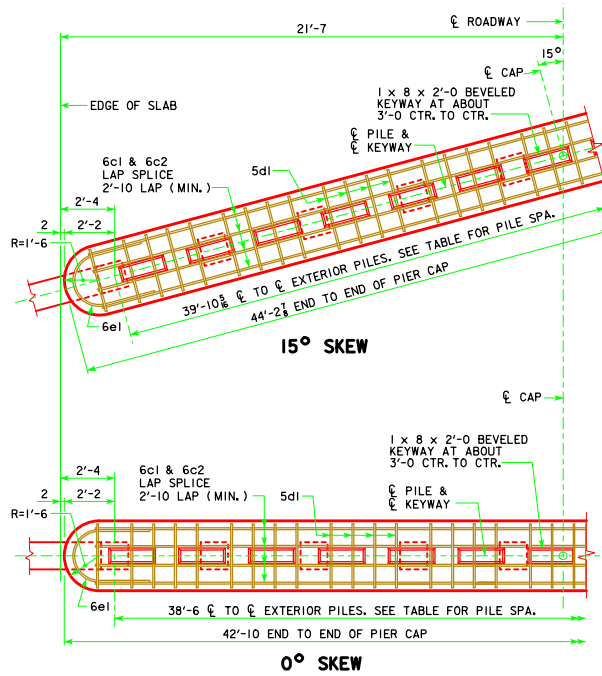


**TYP. HALF PLAN VIEW**

NOTE: NUMBER OF PILES AND STIRRUPS SHOWN ARE FOR A 70'-0" BRIDGE.  
CAP DIMENSIONS ARE TYPICAL FOR ALL BRIDGES.



**PILE ORIENTATION DETAIL FOR TYPE 3 TRESTLE BENT PILES**

LATEST REVISION DATE	 APPROVED BY BRIDGE ENGINEER	 STANDARD DESIGN - 40' ROADWAY, 3 SPAN BRIDGES <b>CONTINUOUS CONCRETE SLAB BRIDGES</b> JULY, 2014	
		<b>NON-MONOLITHIC PIER CAP DETAILS ALL BRIDGES</b>	<b>J40-28-14</b>