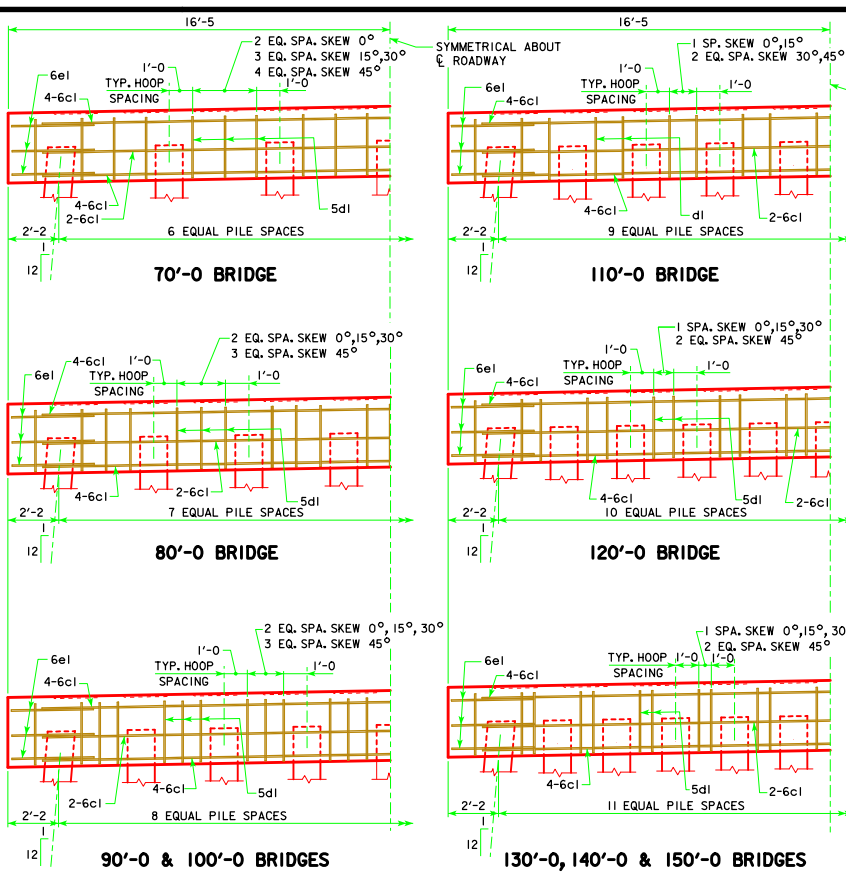


REVISED 08-14 - THE BRIDGE LENGTHS FOR THE TYP. HALF ELEVATION PIER CAP WERE CHANGED TO SHOW THE CORRECT HALF SECTION FOR THE CORRECT LENGTH.



70'-0 BRIDGE

110'-0 BRIDGE

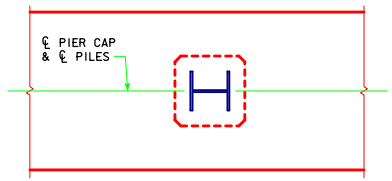
80'-0 BRIDGE

120'-0 BRIDGE

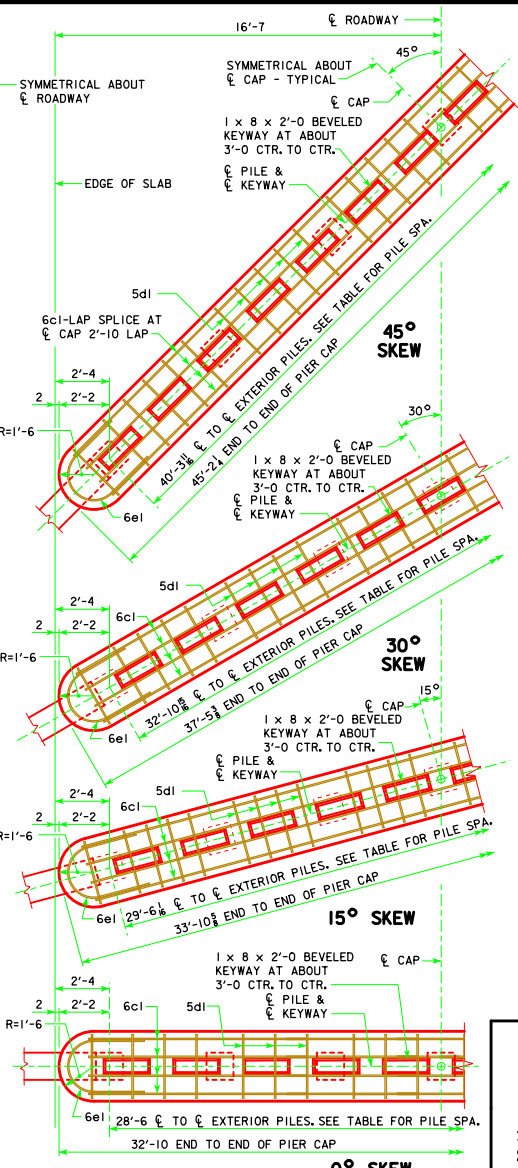
90'-0 & 100'-0 BRIDGES

130'-0, 140'-0 & 150'-0 BRIDGES

TYP. HALF ELEVATION PIER CAP
(LOOKING PARALLEL TO ϕ ROADWAY)

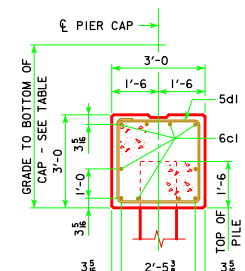


PILE ORIENTATION DETAIL FOR TYPE 3 TRESTLE BENT PILES



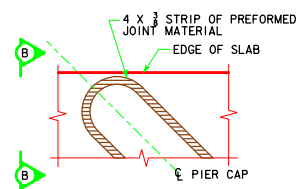
TYP. HALF PLAN VIEW

NOTE: NUMBER OF PILES AND STIRRUPS SHOWN ARE FOR A 70'-0 BRIDGE. CAP DIMENSIONS ARE TYPICAL FOR ALL BRIDGES.



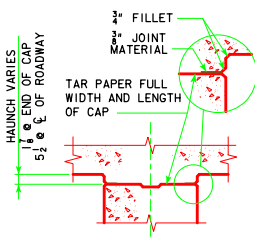
TYP. SECTION

GRADE TO BOTTOM OF CAP DIMENSION	
70'-0 BRIDGE	4'-8
80'-0 BRIDGE	4'-8 1/2
90'-0 BRIDGE	4'-9 1/2
100'-0 BRIDGE	4'-11
110'-0 BRIDGE	5'-0
120'-0 BRIDGE	5'-1 1/2
130'-0 BRIDGE	5'-2 1/2
140'-0 BRIDGE	5'-4
150'-0 BRIDGE	5'-5 1/2

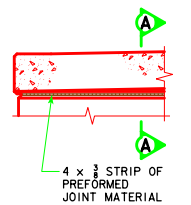


PART PLAN

SHOWING TREATMENT OF 4 x 3/8 STRIP OF PREFORMED JOINT MATERIAL AT ENDS OF PIER CAP. NOTE THAT JOINT MATERIAL IS TO GO ALL THE WAY AROUND PIER CAP FOR SQUARE AND SKEWED BRIDGES.



PART SECT A-A



PART SECT B-B

08-14
LATEST REVISION DATE
Thomas E. M. Donnell
APPROVED BY BRIDGE ENGINEER

Iowa Department of Transportation
Highway Division

STANDARD DESIGN - 30' ROADWAY, 3 SPAN BRIDGES

CONTINUOUS CONCRETE SLAB BRIDGES
NOVEMBER, 2006

NON-MONOLITHIC PIER CAP DETAILS ALL BRIDGES

J30-25-06

SHEET 1 OF 2