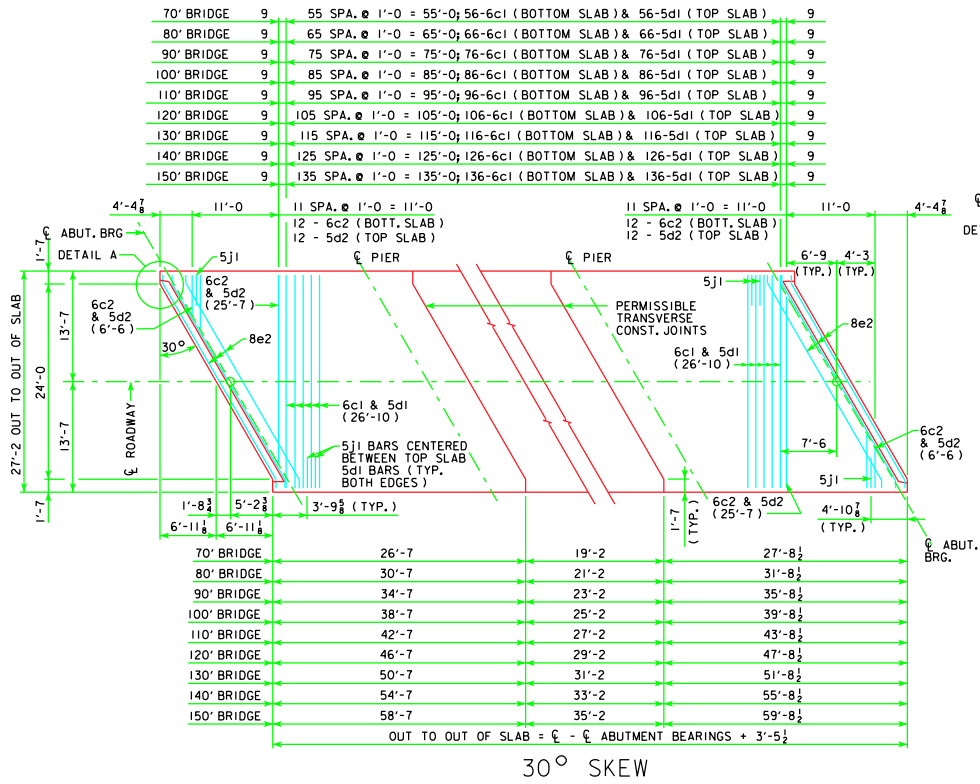
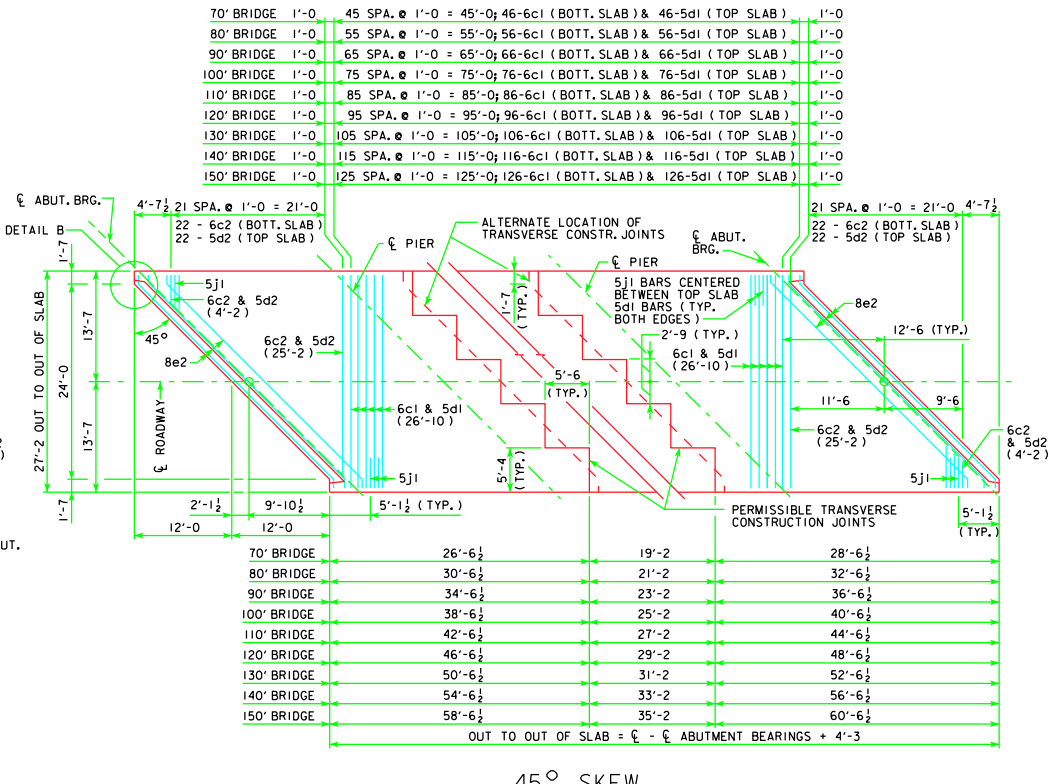


REVISED 12-08 - REVISED PAVING NOTCH, TRANSVERSE REINFORCING AND ADDED TEMPORARY PAVING BLOCK DETAIL. ADDED TEMPORARY PAVING BLOCK DETAIL. A AND ADDED DETAIL B.



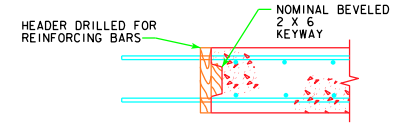
30° SKEW



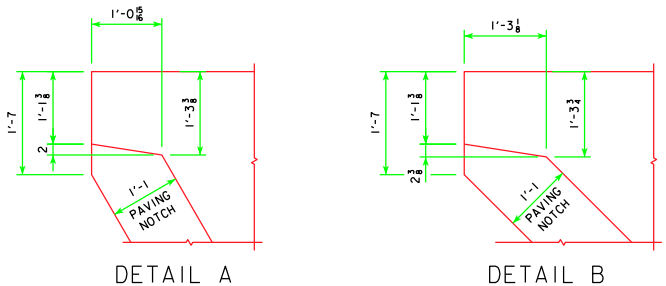
45° SKEW

TRANSVERSE REINFORCING STEEL LAYOUT

NOTE: 5d2 BARS ARE TO PASS UNDER 8e2 BARS IN CONFLICT AREAS ON 30° & 45° SKEW BRIDGES.



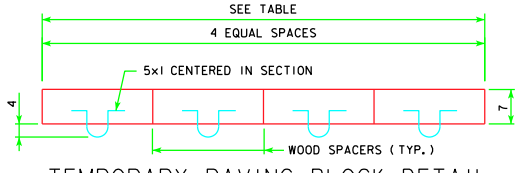
TRANSVERSE CONSTRUCTION JOINT



DETAIL A

DETAIL B

TEMPORARY PAVING BLOCK		
SKEW	LENGTH	CONCRETE
30°	25'-9"	0.6 C.Y.
45°	31'-11"	0.7 C.Y.



TEMPORARY PAVING BLOCK DETAIL

NOTE: TEMPORARY PAVING BLOCK TO BE USED WITH PAVED APPROACHES ONLY. LINE NOTCH WITH TAR PAPER BEFORE PLACING TEMPORARY PAVING BLOCK.

12-08 LATEST REVISION DATE	 APPROVED BY BRIDGE ENGINEER	 <b>Iowa Department of Transportation</b> Highway Division	STANDARD DESIGN - 24' ROADWAY, 3 SPAN BRIDGES <b>CONTINUOUS CONCRETE SLAB BRIDGES</b> NOVEMBER, 2006	
		SUPERSTRUCTURE DETAILS ALL BRIDGES		J24-22-06
		30° & 45° SKEW		