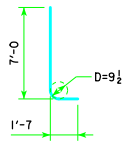


TYPICAL SECTION



d2

NOTE: D = PIN DIAMETER. DIMENSIONS ARE OUT TO OUT.

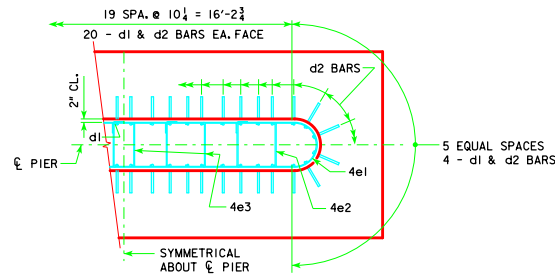
NOTE: THE REINFORCING STEEL QUANTITY IS TO BE INCLUDED ON THE SUMMARY QUANTITIES SHEET IN THE PLAN.

NOTE: THE CONCRETE QUANTITY IS TO BE INCLUDED ON THE SUMMARY QUANTITIES SHEET IN THE PLAN.

NOTE: THE PILE TYPE IS TO BE INCLUDED ON THE SUMMARY QUANTITIES SHEET IN THE PLAN.

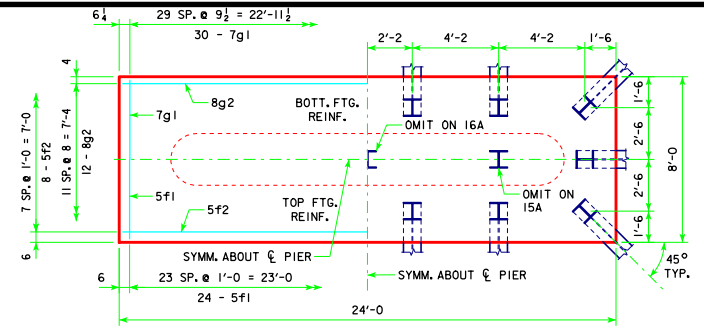
H IN FT.	CL - CL ABUT. BRG.	PILING (HP10x57)		FOOTING SIZE
		NO. & LAYOUT	① LRFD PU, STRENGTH I DES. BRG. (KIPS)	
18 TO 16	201'-4	15A	207	3'-6 x 8' x 24'
	213'-10	15A	215	
	226'-4	16A	211	
16 TO 21	243'-0	16A	220	3'-6 x 8' x 24'
	201'-4	15A	212	
	213'-10	15A	220	
19 TO 24	226'-4	16A	215	3'-6 x 8' x 24'
	243'-0	17A	216	
	201'-4	15A	216	
22 TO 24	213'-10	16A	210	3'-6 x 8' x 24'
	226'-4	16A	219	
	243'-0	18A	212	

FOOTING SIZE	REINFORCING STEEL (ONE FOOTING)				TOTAL WEIGHT (LB.)	STRUCTURAL CONCRETE (CY)
	BAR NO., SIZE & SPACING	LENGTH	WEIGHT (LB.)			
3'-6 x 8' x 24'	d2 48 - #9 AS SHOWN	8'-7	1401			
	f1 24 - #5 @ 1'-0	7'-8	192			
	f2 8 - #5 @ 1'-0	23'-8	197			
	g1 30 - #7 @ 0'-9 1/2	7'-8	470			
	g2 12 - #8 @ 0'-8	23'-8	758			
				3018	24.9	

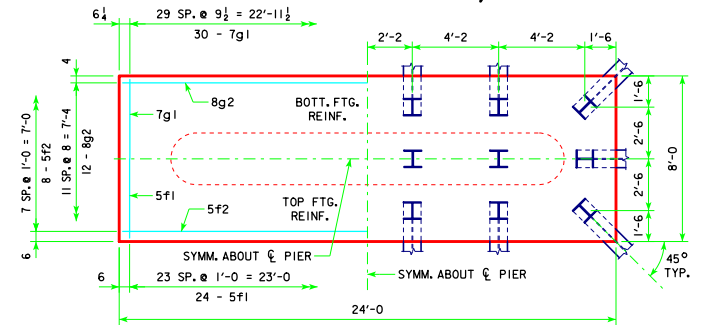


d2 BAR LAYOUT  
(SEE SECTION A-A ON SHEET H44-58-14.)

① NOTE: PU, STRENGTH I DESIGN LOAD (KIPS) IS NOT THE VALUE USED IN THE FIELD FOR DRIVING PILES.



3'-6 x 8'-0 x 24'-0 FOR 15A, 16A & 17A



3'-6 x 8'-0 x 24'-0 FOR 18A

FOOTING NOTES:

THESE FOOTINGS ARE DESIGNED AND DETAILED TO BE USED WITH THE CAP AND COLUMN DETAILS OF THE TEE PIERS AS SHOWN ON SHEET H44-58-14.

BATTER PILES IN EXTERIOR ROWS 1:4 IN THE DIRECTION SHOWN.

STEEL PILING USED AS POINT BEARING SHALL HAVE A MINIMUM DISTANCE OF APPROXIMATELY 10 FEET FROM BOTTOM OF FOOTING TO TOP OF BEARING ROCK. THE PILE LAYOUTS ARE SUCH THAT THE DISTANCE CENTER TO CENTER OF ADJACENT PILING SHALL NOT EXCEED 8'-0.

PIER PILES SHALL BE DRIVEN TO VALUES SHOWN IN DESIGN PLANS.

LATEST REVISION DATE	 APPROVED BY BRIDGE ENGINEER	 STANDARD DESIGN - 44' ROADWAY, THREE SPAN BRIDGE <b>PRETENSIONED PRESTRESSED CONCRETE BEAM BRIDGES</b> SEPTEMBER, 2014	<b>TEE PIER-HP10x57 SRL-2 STEEL PILE FOOTINGS</b> 15° SKEW - H=16' TO 24'	<b>H44-62-14</b>