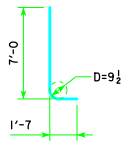
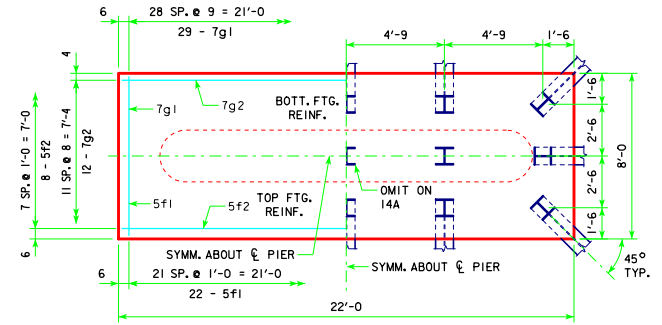


TYPICAL SECTION

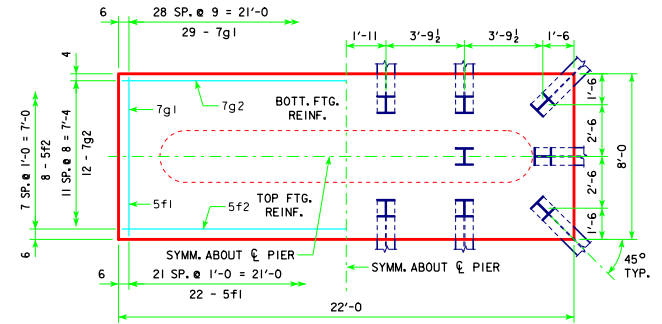


d2

NOTE: D = PIN DIAMETER.  
DIMENSIONS ARE OUT TO OUT.



3'-6 x 8'-0 x 22'-0 FOR 14A & 15A

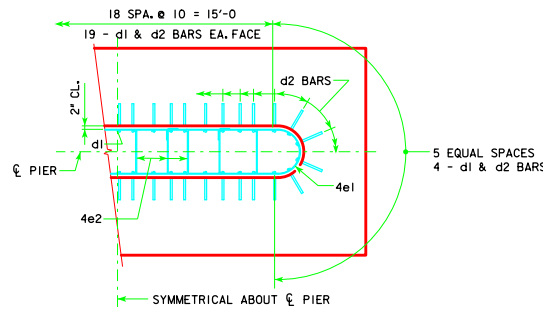


3'-6 x 8'-0 x 22'-0 FOR 16A

H IN FT.	CL - CL ABUT. BRG.	PILING (HP10x57)		FOOTING SIZE
		NO. & LAYOUT	① LRFD PU, STRENGTH I DES. LOAD (KIPS)	
18 TO 21	201'-4	14A	205	3'-6 x 8' x 22'
	213'-10	14A	212	
	226'-4	15A	213	
	243'-0	16A	203	
21 TO 24	201'-4	14A	209	3'-6 x 8' x 22'
	213'-10	14A	217	
	226'-4	15A	218	
	243'-0	16A	207	
22 TO 24	201'-4	14A	214	3'-6 x 8' x 22'
	213'-10	15A	213	
	226'-4	16A	203	
	243'-0	16A	211	

FOOTING SIZE	REINFORCING STEEL (ONE FOOTING)				TOTAL WEIGHT (LB.)	STRUCTURAL CONCRETE (CY)
	BAR	NO., SIZE & SPACING	LENGTH	WEIGHT (LB.)		
3'-6 x 8' x 22'	d2	46 - #9 AS SHOWN	8'-7	1342	2684	22.8
	f1	22 - #5 @ 1'-0	7'-8	176		
	f2	8 - #5 @ 1'-0	21'-8	181		
	g1	29 - #7 @ 0'-9	7'-8	454		
	g2	12 - #7 @ 0'-8	21'-8	531		

① NOTE: PU, STRENGTH I DESIGN LOAD (KIPS) IS NOT THE VALUE  
USED IN THE FIELD FOR DRIVING PILES.



d2 BAR LAYOUT

(SEE SECTION A-A ON SHEET H40-65-06.)

FOOTING NOTES:

THESE FOOTINGS ARE DESIGNED AND DETAILED TO BE USED WITH THE CAP AND COLUMN DETAILS OF THE TEE PIERS AS SHOWN ON SHEET H40-65-06.

BATTER PILES IN EXTERIOR ROWS 1:4 IN THE DIRECTION SHOWN.

STEEL PILING USED AS POINT BEARING SHALL HAVE A MINIMUM DISTANCE OF APPROXIMATELY 10 FEET FROM BOTTOM OF FOOTING TO TOP OF BEARING ROCK. THE PILE LAYOUTS ARE SUCH THAT THE DISTANCE CENTER TO CENTER OF ADJACENT PILING SHALL NOT EXCEED 8'-0.

PIER PILES SHALL BE DRIVEN TO VALUES SHOWN IN DESIGN PLANS.

05-13 LATEST REVISION DATE   APPROVED BY BRIDGE ENGINEER	 STANDARD DESIGN - 40' ROADWAY, THREE SPAN BRIDGE <b>PRETENSIONED PRESTRESSED CONCRETE BEAM BRIDGES</b> AUGUST, 2009	
	<b>TEE PIER-HP10x57 SRL-2 STEEL PILE FOOTINGS</b> 15° SKEW - H=16' TO 24'	<b>H40-69-06</b>