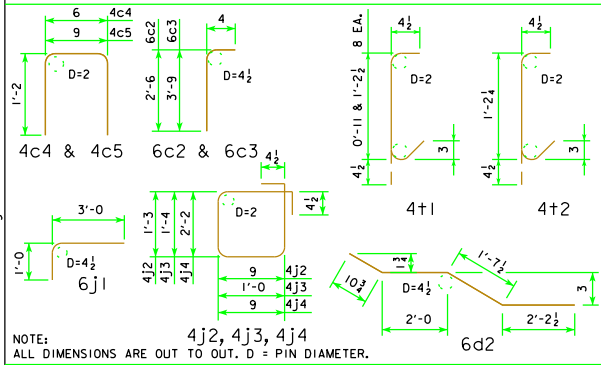


EPOXY COATED REINFORCING STEEL-TWO OPEN RAILS

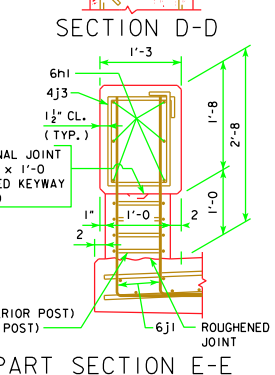
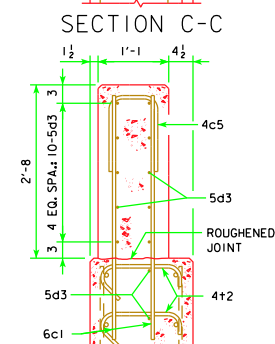
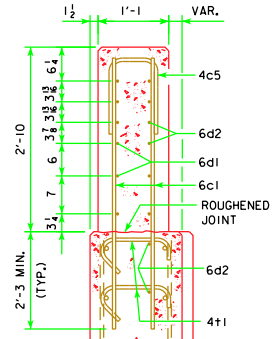
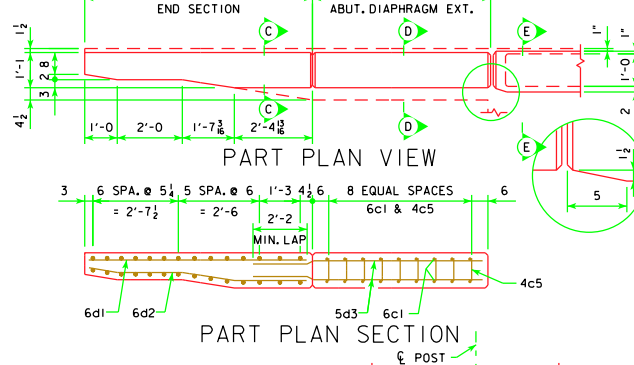
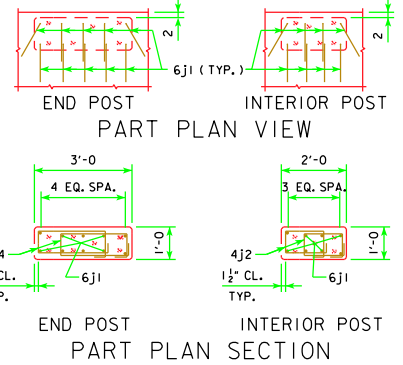
(NOTE: THESE REINFORCING BARS TO BE USED ON ALL SKEWS)

BRIDGE LENGTH			138'-10		151'-4		163'-10		176'-4		188'-10		201'-4		213'-10		226'-4		243'-0							
BAR	LOCATION	SHAPE	NO.	LENGTH	WEIGHT	NO.	LENGTH	WEIGHT	NO.	LENGTH	WEIGHT	NO.	LENGTH	WEIGHT	NO.	LENGTH	WEIGHT	NO.	LENGTH	WEIGHT	NO.	LENGTH	WEIGHT			
6c1	VERTICAL, END SECTION & ABUT. DIAPH. EXT.		96	4'-11	709	96	4'-11	709	96	4'-11	709	96	4'-11	709	168	4'-11	1,241	168	4'-11	1,241	168	4'-11	1,241	168	4'-11	1,241
6c2	VERTICAL, END SECTION		16	2'-10	68	16	2'-10	68	16	2'-10	68	16	2'-10	68	16	2'-10	68	16	2'-10	68	16	2'-10	68	16	2'-10	68
6c3	VERTICAL, END SECTION		16	4'-1	98	16	4'-1	98	16	4'-1	98	16	4'-1	98	16	4'-1	98	16	4'-1	98	16	4'-1	98	16	4'-1	98
4c4	VERTICAL HOOPS, END SECTION		20	2'-10	38	20	2'-10	38	20	2'-10	38	20	2'-10	38	20	2'-10	38	20	2'-10	38	20	2'-10	38	20	2'-10	38
4c5	VERT. HOOPS, END SEC. & ABUT. DIAPH. EXT.		16	3'-1	33	16	3'-1	33	16	3'-1	33	16	3'-1	33	52	3'-1	107	52	3'-1	107	52	3'-1	107	52	3'-1	107
6d1	HORIZONTAL, END SECTION-BACK FACE		24	6'-8	240	24	6'-8	240	24	6'-8	240	24	6'-8	240	24	6'-8	240	24	6'-8	240	24	6'-8	240	24	6'-8	240
6d2	HORIZONTAL, END SECTION-TRAFFIC FACE		32	6'-9	324	32	6'-9	324	32	6'-9	324	32	6'-9	324	32	6'-9	324	32	6'-9	324	32	6'-9	324	32	6'-9	324
5d3	HORIZONTAL, ABUT. DIAPH. EXT.-BOTH FACES		—	—	—	—	—	—	—	—	—	—	—	—	48	7'-2	359	48	7'-2	359	48	7'-2	359	48	7'-2	359
6h1	LONGITUDINAL, OPEN RAIL		24	40'-0	1,442	36	40'-0	2,163	36	40'-0	2,163	36	40'-0	2,163	48	40'-0	2,884	48	40'-0	2,884	60	40'-0	3,605	60	40'-0	3,605
6h2	LONGITUDINAL, OPEN RAIL, ENDS		24	36'-8	1,322	24	36'-8	889	24	30'-11	1,114	24	37'-2	1,340	24	25'-2	907	24	31'-5	1,133	24	37'-8	1,358	24	25'-8	925
6j1	VERTICAL DOWELS, OPEN RAIL		312	4'-0	1,875	328	4'-0	1,971	360	4'-0	2,163	392	4'-0	2,355	408	4'-0	2,451	440	4'-0	2,644	456	4'-0	2,740	488	4'-0	2,932
4j2	HOOP, INTERIOR POST		272	4'-9	863	288	4'-9	914	320	4'-9	1,015	352	4'-9	1,117	368	4'-9	1,168	400	4'-9	1,269	416	4'-9	1,320	448	4'-9	1,422
4j3	HOOP, OPEN RAIL		472	5'-5	1,708	498	5'-5	1,802	550	5'-5	1,990	602	5'-5	2,178	628	5'-5	2,272	680	5'-5	2,460	706	5'-5	2,555	758	5'-5	2,743
4j4	HOOP, END POST		32	6'-7	141	32	6'-7	141	32	6'-7	141	32	6'-7	141	32	6'-7	141	32	6'-7	141	32	6'-7	141	32	6'-7	141
4t1	WING FOOTING TIE BARS		16	VARIABLES	19	16	VARIABLES	19	16	VARIABLES	19	16	VARIABLES	19	16	VARIABLES	19	16	VARIABLES	19	16	VARIABLES	19	16	VARIABLES	19
4t2	WING FOOTING TIE BARS		—	—	—	—	—	—	—	—	—	—	—	—	—	—	—	—	—	—	—	—	—	—	—	
TOTAL LBS. (INCLUDE WITH SUPERSTRUCTURE REINFORCING)			8,880			9,409			10,115			10,823			11,352			13,289			13,756			14,526		

BENT BAR DETAILS



* TRAFFIC FACE 5d3 BARS MAY REQUIRE FIELD CUTTING OR BENDING FOR HIGHER SKEW BRIDGES.



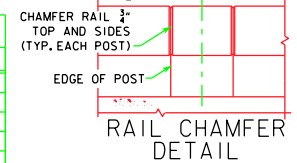
CONCRETE PLACEMENT SUMMARY - C.Y.

BRIDGE LENGTH	138'-10	151'-4	163'-10	176'-4	188'-10	201'-4	213'-10	226'-4	243'-0
OPEN RAIL SECTION	2 @ 0.077 CU. YDS. PER FT.	22.0	24.0	25.9	27.8	29.7	31.7	33.6	35.5
OPEN RAIL-END SECTION	4 @ 0.687 CU. YDS.	2.7	2.7	2.7	2.7	2.7	2.7	2.7	2.7
OPEN RAIL-ABUT. DIAPH. SECTION	4 @ 0.107 CU. YDS. PER FT.	—	—	—	—	—	1.9	1.9	1.9
OPEN RAIL-END POSTS	4 @ 0.11 CU. YDS.	0.4	0.4	0.4	0.4	0.4	0.4	0.4	0.4
OPEN RAIL-INTERIOR POSTS	2 x "E" @ 0.07 CU. YDS.	2.4	2.5	2.8	3.1	3.2	3.5	3.6	3.9
TOTAL (C.Y.)		27.5	29.6	31.8	34.0	36.0	40.2	42.2	44.4

CONCRETE QUANTITIES SHOWN ARE BASED ON 45° SKEW. FOR "E" SEE SHEET H40-42-06.

OPEN CONCRETE RAIL, TL-4 QUANTITIES - L.F.

BRIDGE LENGTH	138'-10	151'-4	163'-10	176'-4	188'-10	201'-4	213'-10	226'-4	243'-0
OPEN CONCRETE RAILING, TL-4 0° SKEW	311.7	336.7	361.7	386.7	411.7	456.7	481.7	506.7	540.0
OPEN CONCRETE RAILING, TL-4 15° SKEW	311.9	336.9	361.9	386.9	411.9	456.7	481.7	506.7	540.0
OPEN CONCRETE RAILING, TL-4 30° SKEW	312.6	337.6	362.6	387.6	412.6	456.7	481.7	506.7	540.0
OPEN CONCRETE RAILING, TL-4 45° SKEW	314.2	339.2	364.2	389.2	414.2	456.7	481.7	506.7	540.0



07-10
LATEST REVISION DATE

Thomas E. McDaniel
APPROVED BY BRIDGE ENGINEER

STANDARD DESIGN - 40' ROADWAY, THREE SPAN BRIDGE
PRETENSIONED PRESTRESSED CONCRETE BEAM BRIDGES
AUGUST, 2009

OPEN RAIL, TL-4 DETAILS

SHEET 2 OF 2

H40-43-06

REVISED 07-10 - PROVIDED A 3" GAP BETWEEN RAIL AND ABUT. DIAPH. EXT. CHANGED 6j1 BAR LENGTH.