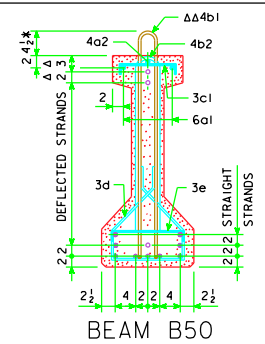
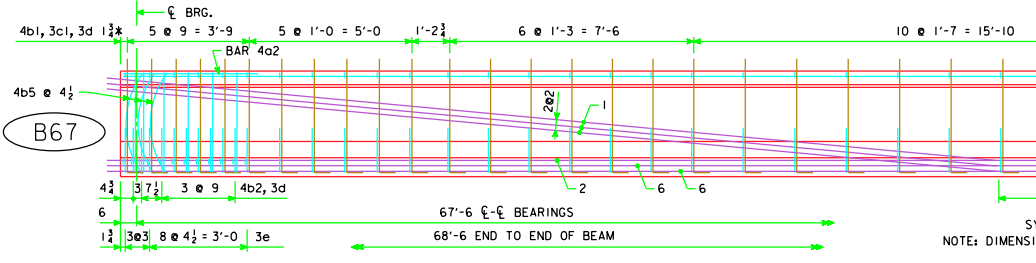
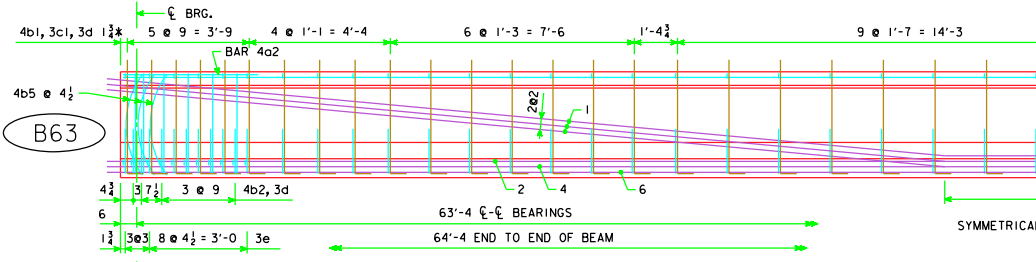
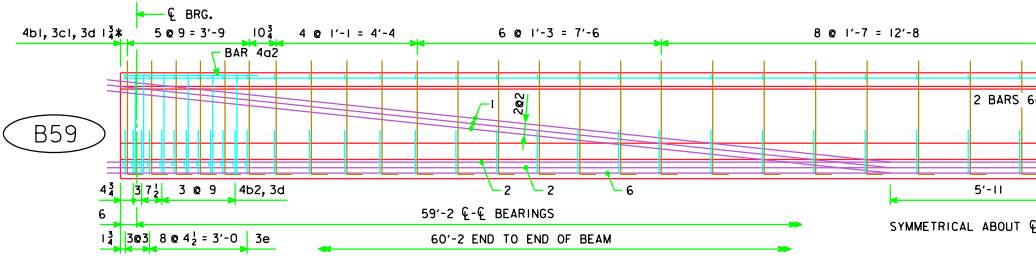
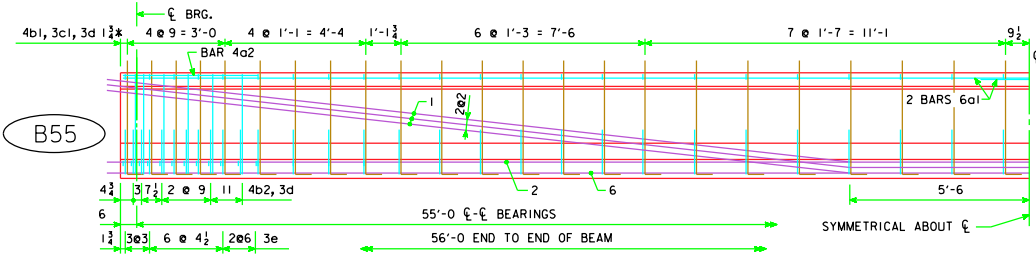
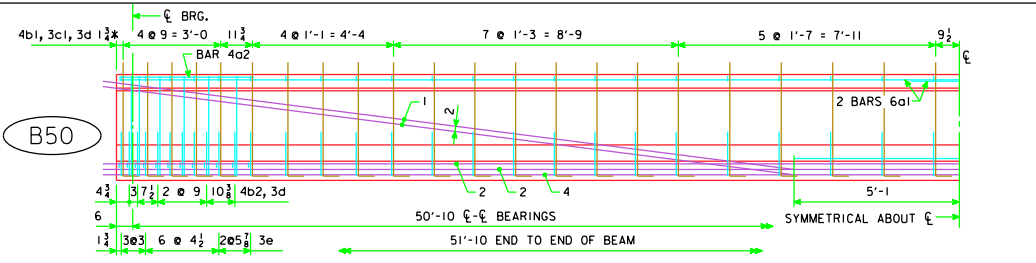
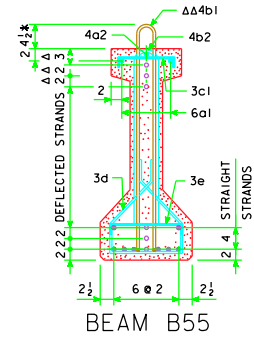


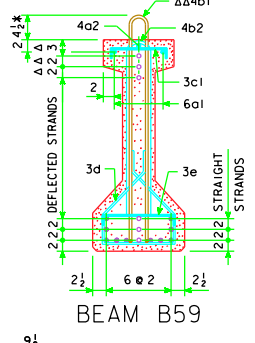
REVISED 07-10 - THE SPECIFICATION REFERENCES WERE CHANGED. THE BEAM DATA WAS UPDATED TO THE CURRENT BEAMS.



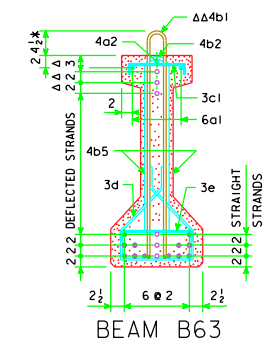
BEAM B50



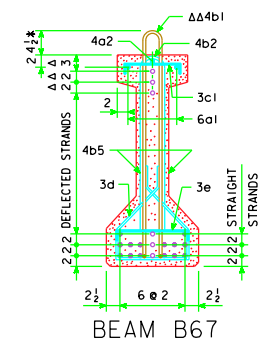
BEAM B55



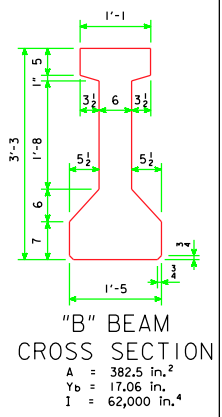
BEAM B59



BEAM B63



BEAM B67



"B" BEAM
 CROSS SECTION
 $A = 382.5 \text{ in.}^2$
 $Y_b = 17.06 \text{ in.}$
 $I = 62,000 \text{ in.}^4$

NOTE: BARS 3d ARE TO BE PLACED IN PAIRS.
 ○ DEFLECTED STRANDS
 * KEEP
 Δ DIMENSIONS AT END OF BEAM
 ΔΔ EPOXY COATED BARS

NOTE: DIMENSIONS FOR THE LOCATION OF THE DEFLECTED STRANDS ARE AT \bar{C} BEAM AND END OF BEAM.

07-10 LATEST REVISION DATE <i>Thomas C. McQuinn</i> APPROVED BY BRIDGE ENGINEER	
	STANDARD DESIGN - 30' ROADWAY, THREE SPAN BRIDGES PRETENSIONED PRESTRESSED CONCRETE BEAM BRIDGES DECEMBER, 2006
B BEAM DETAILS	H30-35-06