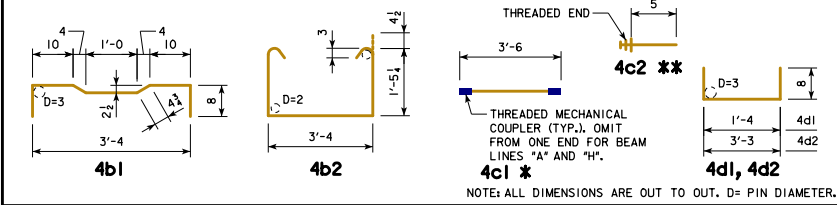


EPOXY COATED REINFORCING BAR LIST
21" x 48" x 40'-0" PPCBB, 0° SKEW

BEAM LINE		BEAM LINE "A"			BEAM LINES "B", "D" AND "F"			BEAM LINES "C", "E" AND "G"			BEAM LINE "H"		
BAR	SHAPE	NO.	LENGTH	WEIGHT	NO.	LENGTH	WEIGHT	NO.	LENGTH	WEIGHT	NO.	LENGTH	WEIGHT
4a1		4	40'-10"	109	4	40'-10"	109	4	40'-10"	109	4	40'-10"	109
4a2		1	39'-8"	26	1	39'-8"	26	1	39'-8"	26	1	39'-8"	26
4b1		60	4'-9 1/2"	192	61	4'-9 1/2"	195	60	4'-9 1/2"	192	61	4'-9 1/2"	195
4b2		44	6'-11 1/2"	205	44	6'-11 1/2"	205	44	6'-11 1/2"	205	44	6'-11 1/2"	205
4c1 *		61	3'-6"	143	62	3'-6"	145	61	3'-6"	143	62	3'-6"	145
4c2 **		2	3'-2"	4	-	-	-	2	3'-2"	4	-	-	-
4d1		8	2'-8"	14	8	2'-8"	14	8	2'-8"	14	8	2'-8"	14
4d2		12	4'-7"	37	12	4'-7"	37	12	4'-7"	37	12	4'-7"	37
TOTAL (LBS.)		747			766			764			748		

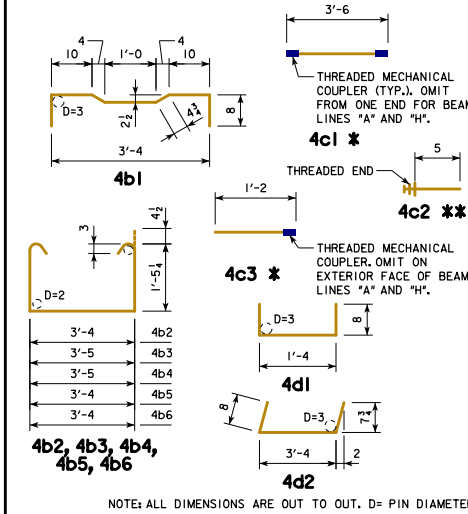
BENT BAR DETAILS



EPOXY COATED REINFORCING BAR LIST
21" x 48" x 40'-0" PPCBB, 15° SKEW

BEAM LINE		BEAM LINES "A" AND "H"			BEAM LINES "B" THRU "G"		
BAR	SHAPE	NO.	LENGTH	WEIGHT	NO.	LENGTH	WEIGHT
4a1		4	40'-10"	109	4	40'-10"	109
4a2		1	39'-8"	26	1	39'-8"	26
4b1		59	4'-9 1/2"	189	59	4'-9 1/2"	189
4b2		35	6'-11 1/2"	163	35	6'-11 1/2"	163
4b3		4	7'-0 1/2"	19	4	7'-0 1/2"	19
4b4		2	7'-0 1/2"	9	2	7'-0 1/2"	9
4b5		2	6'-11 1/2"	9	2	6'-11 1/2"	9
4b6		2	6'-11 1/2"	9	2	6'-11 1/2"	9
4c1 *		60	3'-6"	140	60	3'-6"	140
4c2 **		61	0'-5"	17	122	0'-5"	34
4c3 *		2	1'-2"	2	2	1'-2"	2
4c4		4	3'-4"	9	4	3'-4"	9
4d1		8	2'-8"	14	8	2'-8"	14
4d2		12	4'-8"	37	12	4'-8"	37
TOTAL (LBS.)		752			769		

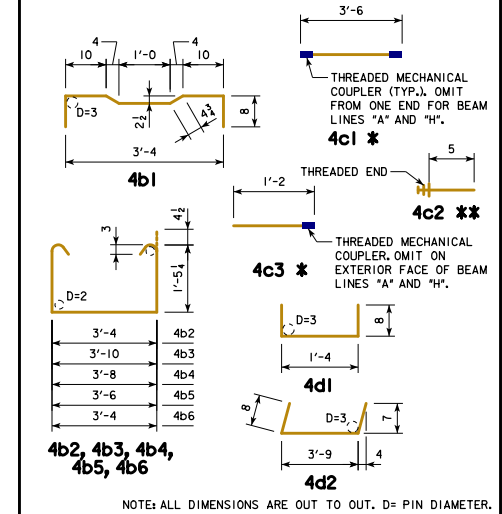
BENT BAR DETAILS



EPOXY COATED REINFORCING BAR LIST
21" x 48" x 40'-0" PPCBB, 30° SKEW

BEAM LINE		BEAM LINES "A" AND "H"			BEAM LINES "B" THRU "G"		
BAR	SHAPE	NO.	LENGTH	WEIGHT	NO.	LENGTH	WEIGHT
4a1		4	40'-10"	109	4	40'-10"	109
4a2		1	39'-8"	26	1	39'-8"	26
4b1		56	4'-9 1/2"	179	56	4'-9 1/2"	179
4b2		35	6'-11 1/2"	163	35	6'-11 1/2"	163
4b3		4	7'-5 1/2"	20	4	7'-5 1/2"	20
4b4		2	7'-3 1/2"	10	2	7'-3 1/2"	10
4b5		2	7'-1 1/2"	10	2	7'-1 1/2"	10
4b6		2	6'-11 1/2"	9	2	6'-11 1/2"	9
4c1 *		57	3'-6"	133	57	3'-6"	133
4c2 **		60	0'-5"	17	120	0'-5"	33
4c3 *		6	1'-2"	5	6	1'-2"	5
4c4		4	3'-8"	10	4	3'-8"	10
4d1		8	2'-8"	14	8	2'-8"	14
4d2		12	5'-1"	41	12	5'-1"	41
TOTAL (LBS.)		746			762		

BENT BAR DETAILS



NOTES:
 * INCLUDES MECHANICAL COUPLER(S). SEE BENT BAR DETAILS.
 ** SEE BENT BAR DETAILS. THE LENGTHS SHOWN DO NOT INCLUDE AN ALLOWANCE FOR THE THREADED END. BAR LENGTHS MAY NEED TO INCREASE DEPENDING ON THE MECHANICAL COUPLER ASSEMBLY USED. THE COST OF THE THREADED PORTION OF THESE BARS IS TO BE INCLUDED IN THE PRICE BID FOR THE BEAMS. THE WEIGHT OF THE THREADED END IS NOT INCLUDED IN THE QUANTITY SHOWN.

LATEST REVISION DATE

Thomas E. M. Donnell
 APPROVED BY BRIDGE ENGINEER

IOWADOT Highway Division

STANDARD DESIGN - 30'-0" ROADWAY, SINGLE SPAN
CONCRETE BOX BEAM BRIDGES

DECEMBER, 2016

21" x 48" x 40'-0" PPCBB DETAILS
REINFORCING BAR LIST

B30-40-16