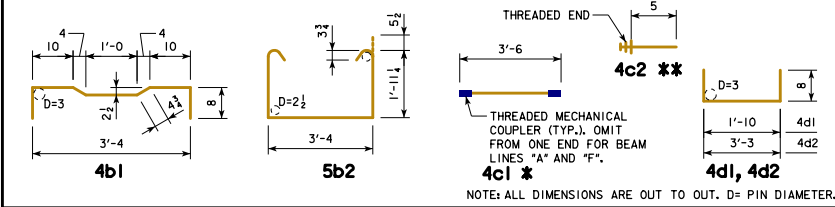


### EPOXY COATED REINFORCING BAR LIST 27" x 48" x 30'-0 RCBB, 0° SKEW

BEAM LINE		BEAM LINE "A"			BEAM LINES "B" AND "D"			BEAM LINES "C" AND "E"			BEAM LINE "F"		
BAR	SHAPE	NO.	LENGTH	WEIGHT	NO.	LENGTH	WEIGHT	NO.	LENGTH	WEIGHT	NO.	LENGTH	WEIGHT
4a1		6	30'-10	124	6	30'-10	124	6	30'-10	124	6	30'-10	124
4a2		1	29'-8	20	1	29'-8	20	1	29'-8	20	1	29'-8	20
9a3		6	30'-10	629	6	30'-10	629	6	30'-10	629	6	30'-10	629
9a4		1	29'-8	101	1	29'-8	101	1	29'-8	101	1	29'-8	101
4b1		45	4'-9 1/2	144	46	4'-9 1/2	147	45	4'-9 1/2	144	46	4'-9 1/2	147
5b2		37	8'-1 1/2	314	37	8'-1 1/2	314	37	8'-1 1/2	314	37	8'-1 1/2	314
4c1 *		46	3'-6	108	47	3'-6	110	46	3'-6	108	47	3'-6	110
4c2 **		46	0'-5	13	94	0'-5	26	92	0'-5	26	47	0'-5	13
4c3		2	3'-2	4	-	-	-	2	3'-2	4	-	-	-
4d1		8	3'-2	17	8	3'-2	17	8	3'-2	17	8	3'-2	17
4d2		6	4'-7	18	6	4'-7	18	6	4'-7	18	6	4'-7	18
TOTAL (LBS.)		1492			1506			1505			1493		

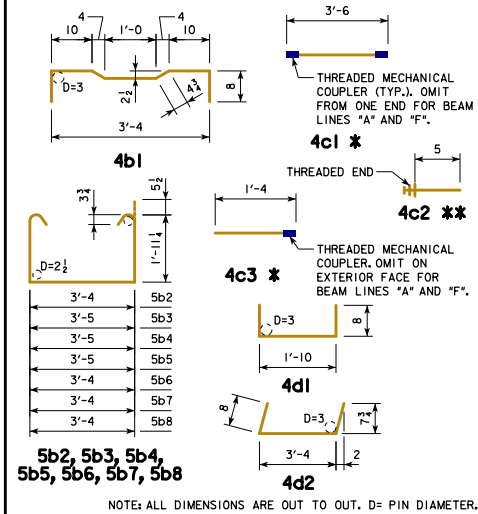
#### BENT BAR DETAILS



### EPOXY COATED REINFORCING BAR LIST 27" x 48" x 30'-0 RCBB, 15° SKEW

BEAM LINE		BEAM LINES "A" AND "F"			BEAM LINES "B", "C", "D", "E"		
BAR	SHAPE	NO.	LENGTH	WEIGHT	NO.	LENGTH	WEIGHT
4a1		6	30'-10	124	6	30'-10	124
4a2		1	29'-8	20	1	29'-8	20
9a3		6	30'-10	629	6	30'-10	629
9a4		1	29'-8	101	1	29'-8	101
4b1		44	4'-9 1/2	141	44	4'-9 1/2	141
5b2		25	8'-1 1/2	212	25	8'-1 1/2	212
5b3		2	8'-2 1/2	17	2	8'-2 1/2	17
5b4		2	8'-2 1/2	17	2	8'-2 1/2	17
5b5		2	8'-2 1/2	17	2	8'-2 1/2	17
5b6		2	8'-1 1/2	17	2	8'-1 1/2	17
5b7		2	8'-1 1/2	17	2	8'-1 1/2	17
5b8		4	8'-1 1/2	34	4	8'-1 1/2	34
4c1 *		45	3'-6	105	45	3'-6	105
4c2 **		46	0'-5	13	92	0'-5	26
4c3 *		2	1'-4	2	2	1'-4	2
4c4		4	3'-4	9	4	3'-4	9
4d1		8	3'-2	17	8	3'-2	17
4d2		6	4'-8	19	6	4'-8	19
TOTAL (LBS.)		1511			1524		

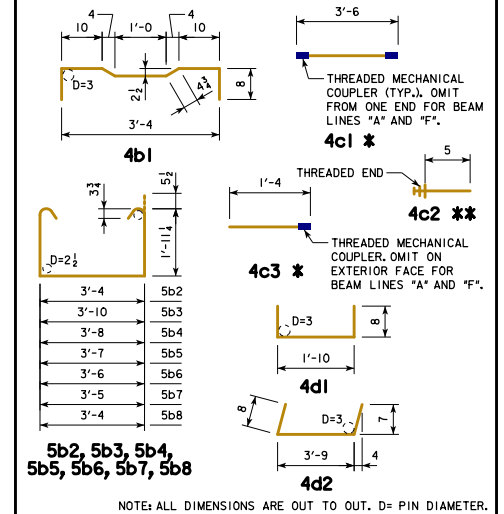
#### BENT BAR DETAILS



### EPOXY COATED REINFORCING BAR LIST 27" x 48" x 30'-0 RCBB, 30° SKEW

BEAM LINE		BEAM LINES "A" AND "F"			BEAM LINES "B", "C", "D", "E"		
BAR	SHAPE	NO.	LENGTH	WEIGHT	NO.	LENGTH	WEIGHT
4a1		6	30'-10	124	6	30'-10	124
4a2		1	29'-8	20	1	29'-8	20
9a3		6	30'-10	629	6	30'-10	629
9a4		1	29'-8	101	1	29'-8	101
4b1		41	4'-9 1/2	131	41	4'-9 1/2	131
5b2		25	8'-1 1/2	212	25	8'-1 1/2	212
5b3		2	8'-7 1/2	18	2	8'-7 1/2	18
5b4		2	8'-5 1/2	18	2	8'-5 1/2	18
5b5		2	8'-4 1/2	17	2	8'-4 1/2	17
5b6		2	8'-3 1/2	17	2	8'-3 1/2	17
5b7		2	8'-2 1/2	17	2	8'-2 1/2	17
5b8		4	8'-1 1/2	34	4	8'-1 1/2	34
4c1 *		42	3'-6	98	42	3'-6	98
4c2 **		45	0'-5	13	90	0'-5	25
4c3 *		6	1'-4	5	6	1'-4	5
4c4		4	3'-8	10	4	3'-8	10
4d1		8	3'-2	17	8	3'-2	17
4d2		6	5'-1	20	6	5'-1	20
TOTAL (LBS.)		1501			1513		

#### BENT BAR DETAILS



NOTES:  
 \* INCLUDES MECHANICAL COUPLER(S). SEE BENT BAR DETAILS.  
 \*\* SEE BENT BAR DETAILS. THE LENGTHS SHOWN DO NOT INCLUDE AN ALLOWANCE FOR THE THREADED END. BAR LENGTHS MAY NEED TO INCREASE DEPENDING ON THE MECHANICAL COUPLER ASSEMBLY USED. THE COST OF THE THREADED PORTION OF THESE BARS IS TO BE INCLUDED IN THE PRICE BID FOR THE BEAMS. THE WEIGHT OF THE THREADED END IS NOT INCLUDED IN THE QUANTITY SHOWN.

LATEST REVISION DATE

APPROVED BY BRIDGE ENGINEER

**IOWADOT** Highway Division

STANDARD DESIGN - 24'-0 ROADWAY, SINGLE SPAN  
**CONCRETE BOX BEAM BRIDGES**

DECEMBER, 2016

**27" x 48" x 30'-0 RCBB DETAILS  
 REINFORCING BAR LIST**

B24-55-16