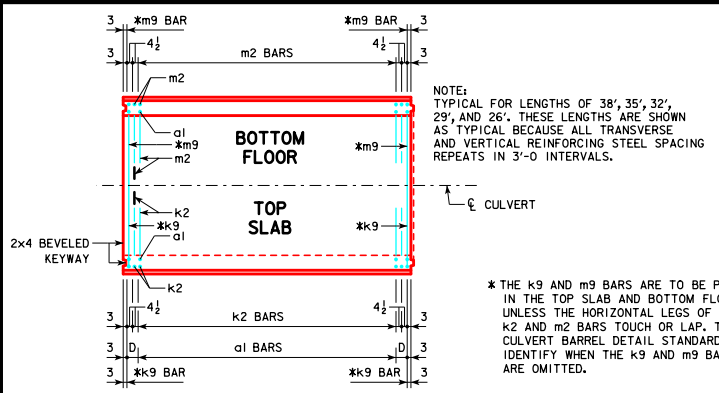
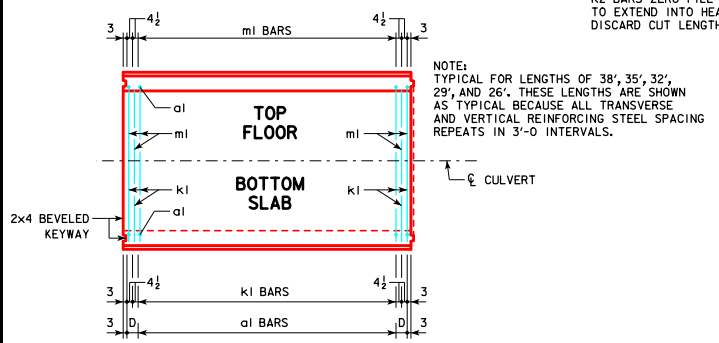


REVISED 07-14 - TRANSITION WALL DETAILS.
 REVISED 02-2016 - EDITED KEYWAY NOTES IN PLAN VIEWS AND CORRECTED TYPINGS.
 REVISED 02-2016 - EDITED KEYWAY NOTES IN PLAN VIEWS AND CORRECTED TYPINGS.
 ENGLISHBROSIGNEDSINGULCULVERTS.DGN - RCB G2-12 - THIS SHEET ISSUED 04-12.



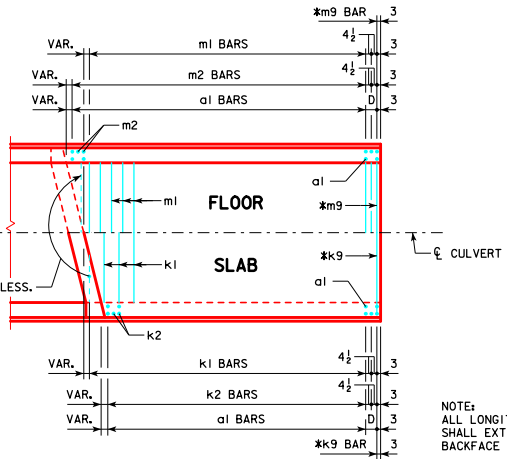
STANDARD SECTION PLAN VIEW
 (KEYWAY IS TO BE OMITTED WHEN BELL JOINTS ARE USED)



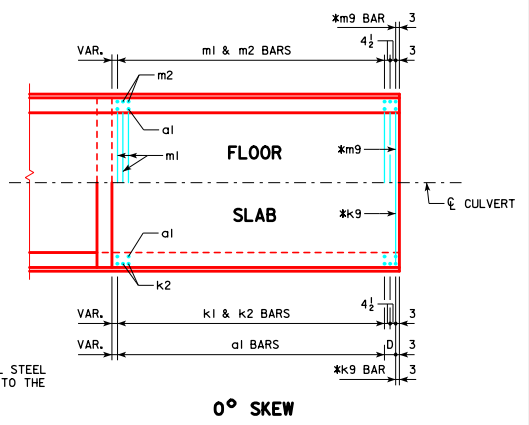
STANDARD SECTION PLAN VIEW
 (KEYWAY IS TO BE OMITTED WHEN BELL JOINTS ARE USED)

* THE k9 AND m9 BARS ARE TO BE PLACED IN THE TOP SLAB AND BOTTOM FLOOR UNLESS THE HORIZONTAL LEGS OF THE k2 AND m2 BARS TOUCH OR LAP. THE CULVERT BARREL DETAIL STANDARDS IDENTIFY WHEN THE k9 AND m9 BARS ARE OMITTED.

CUT & RELOCATE BARS AS REQUIRED, k1 BARS ALL FILLS & k2 BARS ZERO FILL ONLY. m1 BARS TO EXTEND INTO HEADWALL APRON. DISCARD CUT LENGTHS OF 2'-0 OR LESS.



TYPICAL SKEW



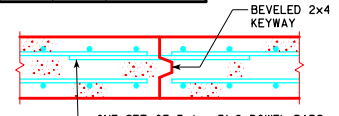
0° SKEW

END SECTION PLAN VIEWS
 (KEYWAYS NOT SHOWN)

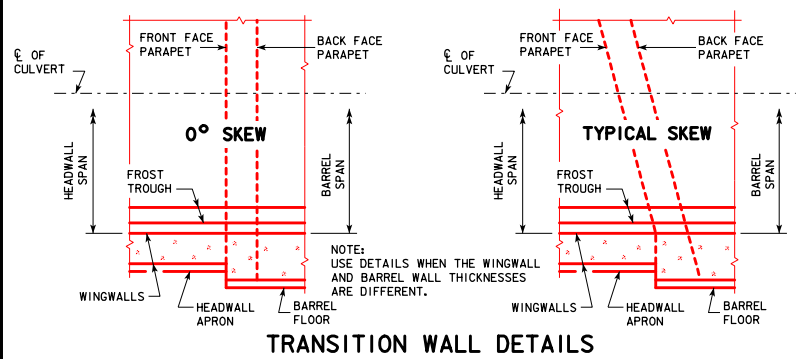
NOTE: END SECTION DETAILS SHOWN ARE FOR A 15° SKEW BARREL. USE FOR SKEWS OF 30° & 45° BY INCREASING THE NUMBER OF TRANSVERSE REINFORCING BARS REQUIRED TO BE CUT AND RELOCATED.

5#1 BARS - ONE CONST. JT.

SPAN	NO.	WEIGHT (LB)
3'-0	4	15
4'-0	5	18
5'-0	6	22
6'-0	7	26
8'-0	9	33
10'-0	11	40
12'-0	13	47



TOP SLAB CONSTRUCTION JOINT DETAIL



TRANSITION WALL DETAILS



STANDARD DESIGN
SINGLE REINFORCED CONCRETE BOX CULVERTS
 APRIL, 2012

TYPICAL CULVERT BARREL DETAILS

RCB G2-12

12-2016
 LATEST REVISION DATE
 Approved by: *Thomas E. Mc Donnell*
 APPROVED BY BRIDGE ENGINEER