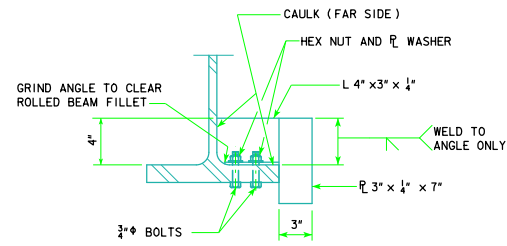


FLANGE DEFLECTOR DETAILS



SECTION A-A

BRIDGE LENGTH	WEIGHT (lb.) PER FLANGE DEFLECTOR
160'-0	6.0
180'-0	6.0
200'-0	6.2
220'-0	6.4
240'-0	6.4
260'-0	7.5
280'-0	7.5
300'-0	7.5
320'-0	7.5
340'-0	7.6

INCLUDES WEIGHT OF PLATES, ANGLES, BOLTS, NUTS AND WASHERS.

NOTE: THE STRUCTURAL STEEL QUANTITY FOR THE FLANGE DEFLECTOR PLUS THE TOTAL NUMBER OF FLANGE DEFLECTORES REQUIRED IS TO BE INCLUDED ON THE SUMMARY QUANTITIES SHEET IN THE BRIDGE PLAN.

NOTES:

1. FLANGE DEFLECTORS ARE REQUIRED ON THE OUTSIDE OF THE EXTERIOR BEAM. LOCATION AND NUMBER OF FLANGE DEFLECTORS DETERMINED BY FINAL DESIGNER.
2. FLANGE DEFLECTOR LAYOUT IS SHOWN ON THE "GENERAL INFORMATION SHEET (WORKING STANDARD 525) IN THE BRIDGE PLANS.

LATEST REVISION DATE	 APPROVED BY BRIDGE ENGINEER	 STANDARD DESIGN - 40' ROADWAY, 3 SPAN BRIDGES ROLLED STEEL BEAM BRIDGES OCTOBER, 2014	
		FLANGE DEFLECTOR DETAILS	RS40-083-14