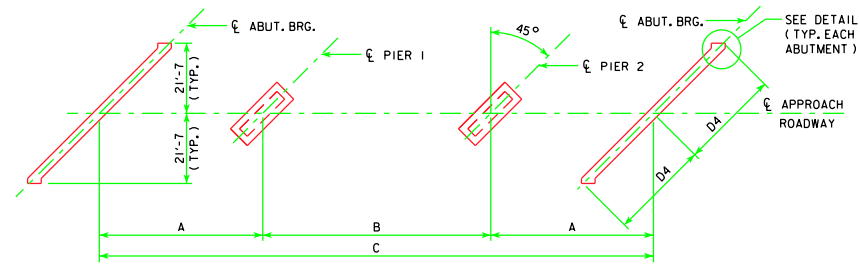
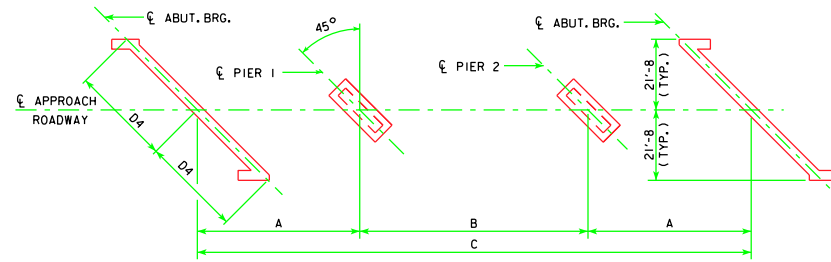


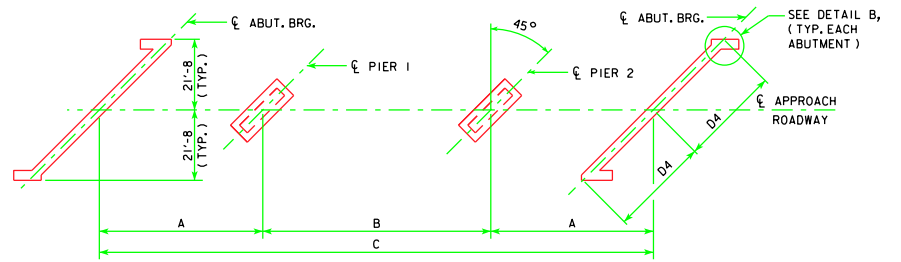
45° SKEW (R.A.)
(BRIDGES 160'-0 TO 320'-0)



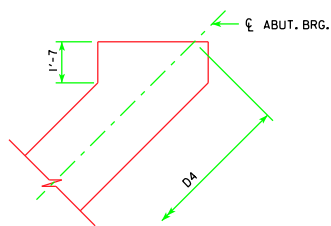
45° SKEW (L.A.)
(BRIDGES 160'-0 TO 320'-0)



45° SKEW (R.A.)
(340'-0 BRIDGE)

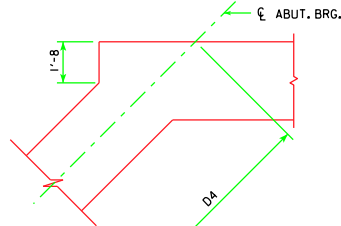


45° SKEW (L.A.)
(340'-0 BRIDGE)



DETAIL A

DIMENSION D4 APPLIES AT LOCATION SHOWN ALONG THE ξ ABUTMENT BEARING (TYP.)



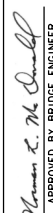

DETAIL B

DIMENSION D4 APPLIES AT LOCATION SHOWN ALONG THE ξ ABUTMENT BEARING (TYP.)

BEAM BRIDGE STANDARDS

LENGTH	A	B	C	45° SKEW D4
160'-0	48'-0	64'-0	160'-0	30'-6 ⁵ / ₈
180'-0	54'-0	72'-0	180'-0	30'-6 ⁵ / ₈
200'-0	60'-0	80'-0	200'-0	30'-6 ⁵ / ₈
220'-0	66'-0	88'-0	220'-0	30'-6 ⁵ / ₈
240'-0	72'-0	96'-0	240'-0	30'-6 ⁵ / ₈
260'-0	78'-0	104'-0	260'-0	30'-6 ⁵ / ₈
280'-0	84'-0	112'-0	280'-0	30'-6 ⁵ / ₈
300'-0	90'-0	120'-0	300'-0	30'-6 ⁵ / ₈
320'-0	96'-0	128'-0	320'-0	30'-6 ⁵ / ₈
340'-0	102'-0	136'-0	340'-0	30'-7 ¹ / ₈

- NOTES:
 1. ALL SUBSTRUCTURE UNITS ARE CONSTRUCTED PARALLEL TO THE SKEW INDICATED FOR EACH BRIDGE.
 2. R.A. = RIGHT AHEAD
 L.A. = LEFT AHEAD

LATEST REVISION DATE	 APPROVED BY BRIDGE ENGINEER	 Iowa Department of Transportation Highway Division
		STANDARD DESIGN - 40' ROADWAY, 3 SPAN BRIDGES ROLLED STEEL BEAM BRIDGES JUNE, 2010
		SUBSTRUCTURE LAYOUTS RS40-006-10