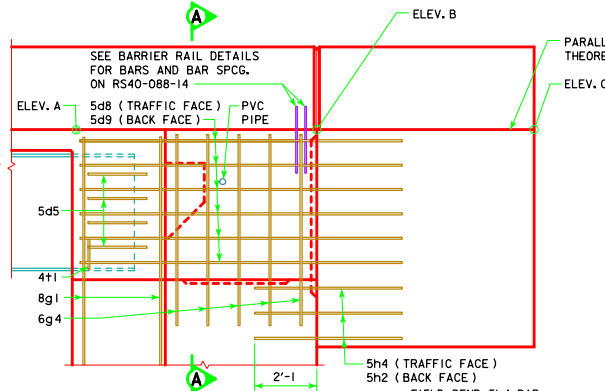


PART LONGITUDINAL SECTION NEAR GUTTER

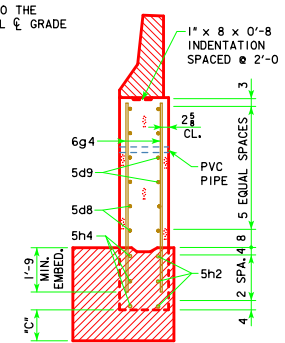
NOTE:
PLUG 3"Ø PVC PIPE WITH
EXPANDING FOAM PRIOR
TO BACKFILLING BEHIND
ABUTMENTS.

NOTE:
FOR ELEVATION A, ELEVATION B, ELEVATION C AND
DIMENSION C SEE "MISCELLANEOUS DETAILS"
FOR THE APPROPRIATE LENGTH BRIDGE.

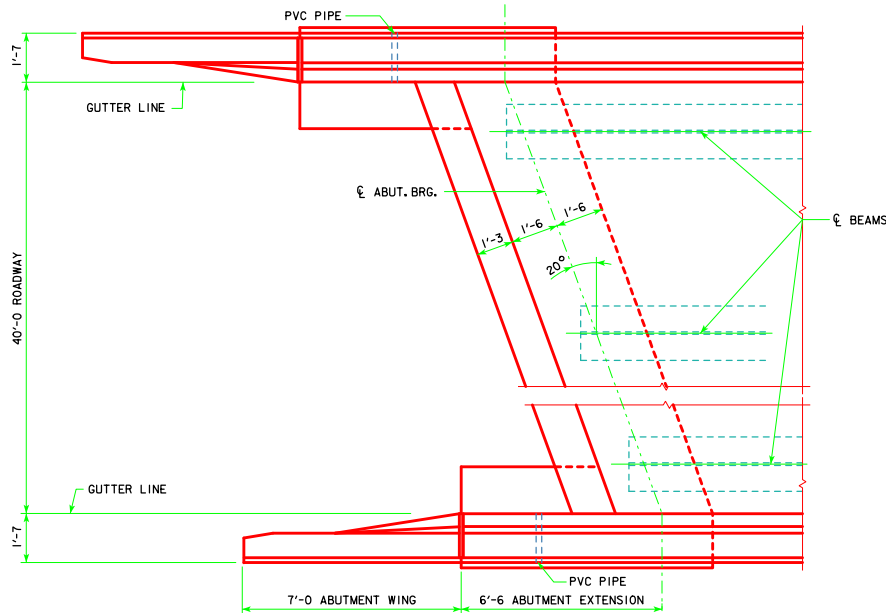


PART END VIEW AT ABUTMENT

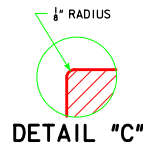
FIELD BEND 5h4 BAR
AS NECESSARY TO
AVOID PILE IN
ABUTMENT WING.



SECTION A-A



PART PLAN
(STEEL DIAPHRAGMS NOT SHOWN)



LATEST REVISION DATE	 APPROVED BY BRIDGE ENGINEER	 STANDARD DESIGN - 40' ROADWAY, 3 SPAN BRIDGES ROLLED STEEL BEAM BRIDGES OCTOBER, 2014	
		LONGITUDINAL SECTION 20° SKEW	RS40-024-14