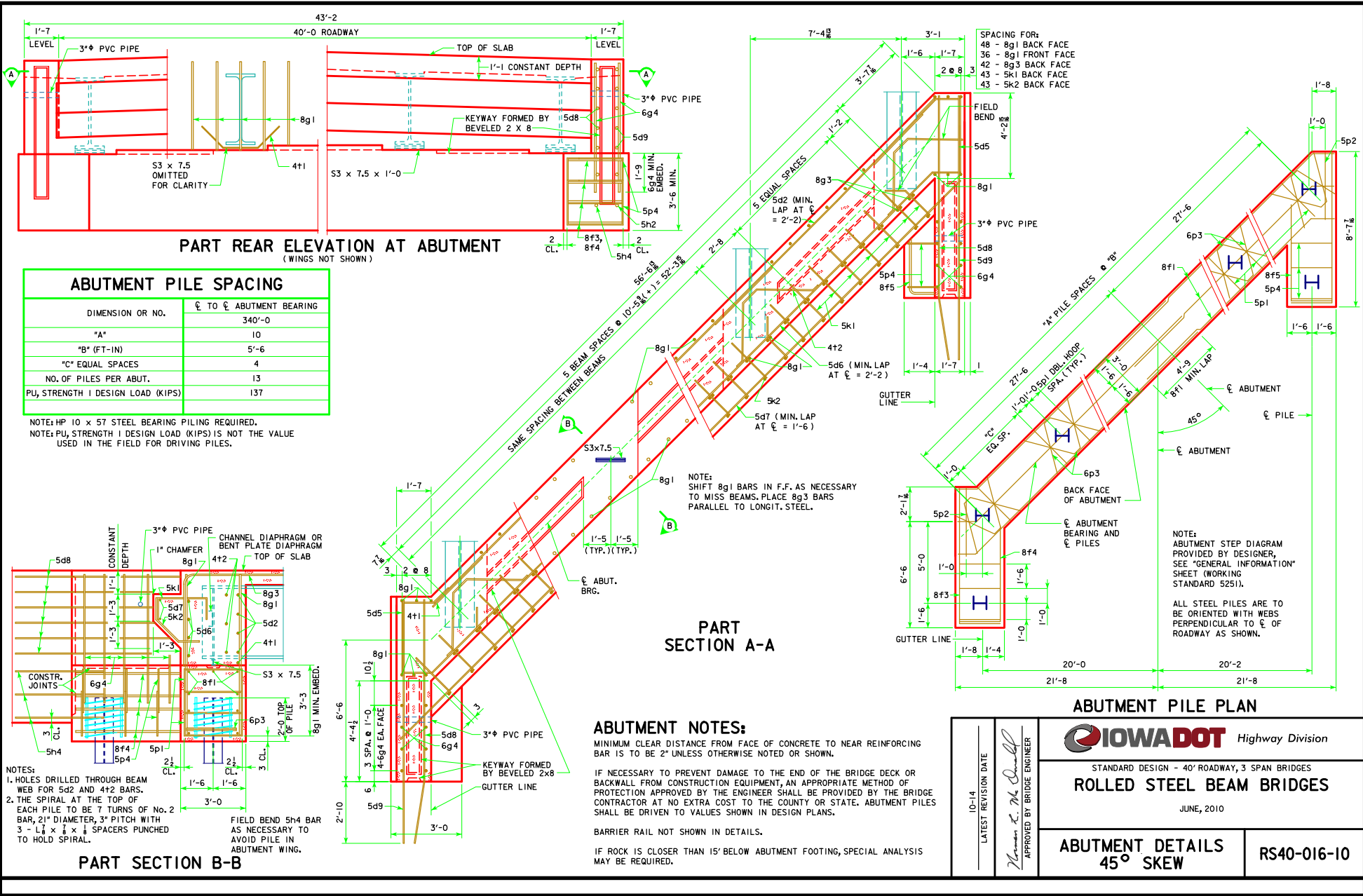


REVISED 10-14 - THE REFERENCE TO THE ABUTMENT STEP DIAGRAM SHEET WAS CHANGED TO GENERAL INFORMATION SHEET INSTEAD OF THE ESTIMATED BRIDGE QUANTITIES SHEET.



PART REAR ELEVATION AT ABUTMENT
(WINGS NOT SHOWN)

ABUTMENT PILE SPACING	
DIMENSION OR NO.	℄ TO ℄ ABUTMENT BEARING
"A"	10
"B" (FT-IN)	5'-6
"C" EQUAL SPACES	4
NO. OF PILES PER ABUT.	13
PU, STRENGTH I DESIGN LOAD (KIPS)	137

NOTE: HP 10 x 57 STEEL BEARING PILING REQUIRED.
NOTE: PU, STRENGTH I DESIGN LOAD (KIPS) IS NOT THE VALUE USED IN THE FIELD FOR DRIVING PILES.

ABUTMENT NOTES:

MINIMUM CLEAR DISTANCE FROM FACE OF CONCRETE TO NEAR REINFORCING BAR IS TO BE 2" UNLESS OTHERWISE NOTED OR SHOWN.

IF NECESSARY TO PREVENT DAMAGE TO THE END OF THE BRIDGE DECK OR BACKWALL FROM CONSTRUCTION EQUIPMENT, AN APPROPRIATE METHOD OF PROTECTION APPROVED BY THE ENGINEER SHALL BE PROVIDED BY THE BRIDGE CONTRACTOR AT NO EXTRA COST TO THE COUNTY OR STATE. ABUTMENT PILES SHALL BE DRIVEN TO VALUES SHOWN IN DESIGN PLANS.

BARRIER RAIL NOT SHOWN IN DETAILS.

IF ROCK IS CLOSER THAN 15' BELOW ABUTMENT FOOTING, SPECIAL ANALYSIS MAY BE REQUIRED.

ABUTMENT PILE PLAN

IOWADOT Highway Division
STANDARD DESIGN - 40' ROADWAY, 3 SPAN BRIDGES
ROLLED STEEL BEAM BRIDGES
JUNE, 2010

ABUTMENT DETAILS
45° SKEW

RS40-016-10

LATEST REVISION DATE
10-14
APPROVED BY BRIDGE ENGINEER
Norman E. McQuinn