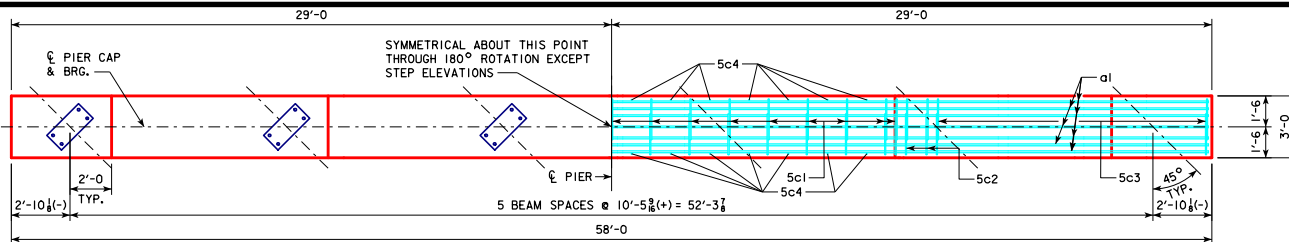


REVISED 10-2016 - CHANGED BEVELED KEYWAY ON PIER COLUMN CAP AND FOOTING TO 3"x10"x23'-0" (WAS 2"x8"x25'-0"). KEYWAY LENGTH CHANGED TO BE 5'-0" LESS THAN WIDTH OF PIER COLUMN.



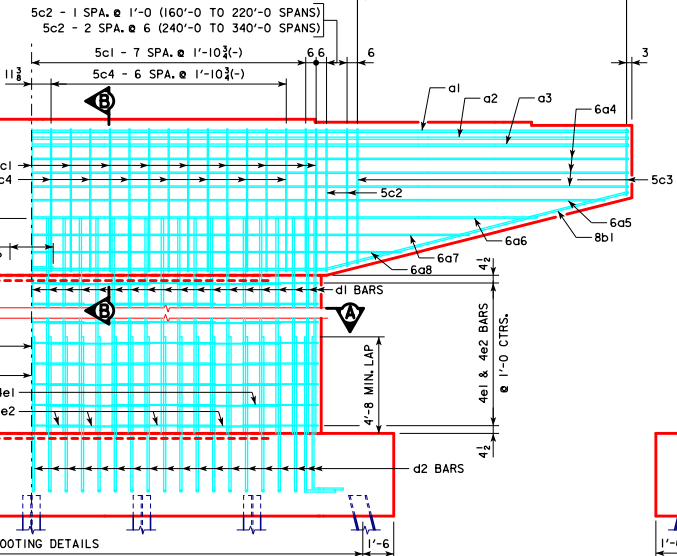
NOTE:
ANCHOR BOLTS REQUIRED FOR FIXED
PIER BEARINGS ONLY. FOR BOLT AND
BEARING SIZES, SEE RS40-093-10,
RS40-094-10 OR RS40-095-10.

CAP PLAN

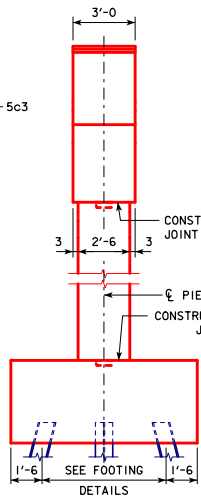
(LAYOUT OF a1 BARS SHOWN IS
FOR 160'-0" TO 200'-0" SPANS)

- 160'-0" TO 240'-0" SPANS 5c3 - 13 SPA. @ 1'-0" = 13'-0"
- 260'-0" TO 280'-0" SPANS 5c3 - 17 SPA. @ 9 1/2" (+) = 13'-0"
- 300'-0" TO 340'-0" SPANS 5c3 - 22 SPA. @ 7 1/2" (-) = 13'-0"

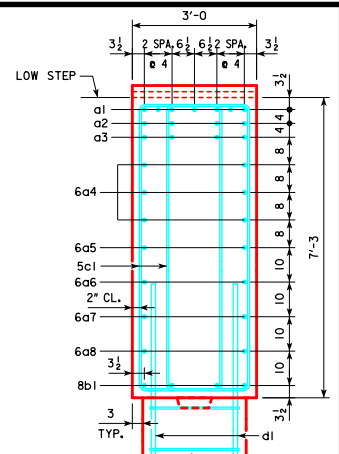
NOTE:
SHIFT 5c1 BARS TO CLEAR
d1 COLUMN BARS ALL SPANS.



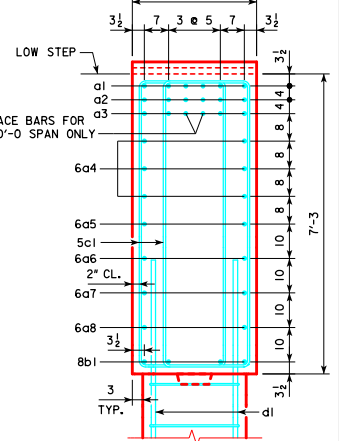
FRONT ELEVATION



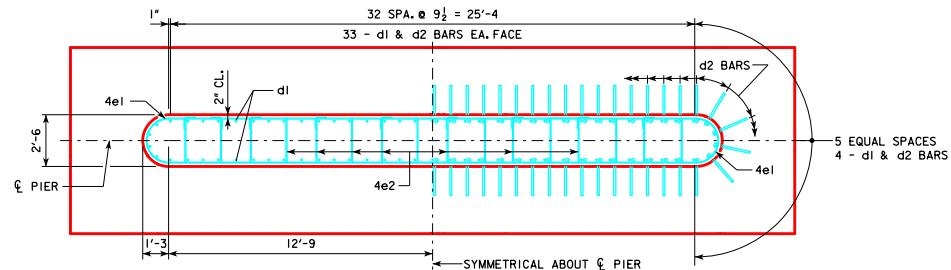
END ELEVATION



SECTION B-B
160'-0" TO 200'-0" SPANS



SECTION B-B
220'-0" TO 340'-0" SPANS



SECTION A-A

LATEST REVISION DATE
Thomas E. McQuinn
APPROVED BY BRIDGE ENGINEER

IOWADOT Highway Division
STANDARD DESIGN - 40' ROADWAY, 3 SPAN BRIDGES
ROLLED STEEL BEAM BRIDGES
JUNE, 2010
TEE PIER CAP & COLUMN DETAILS
45° SKEW
RS40-156-10