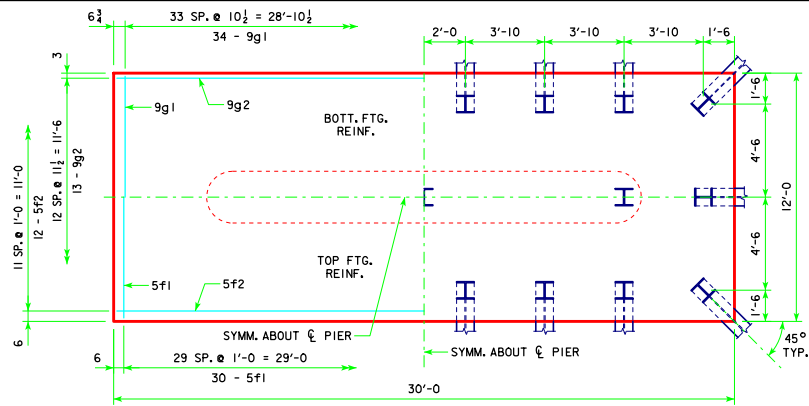
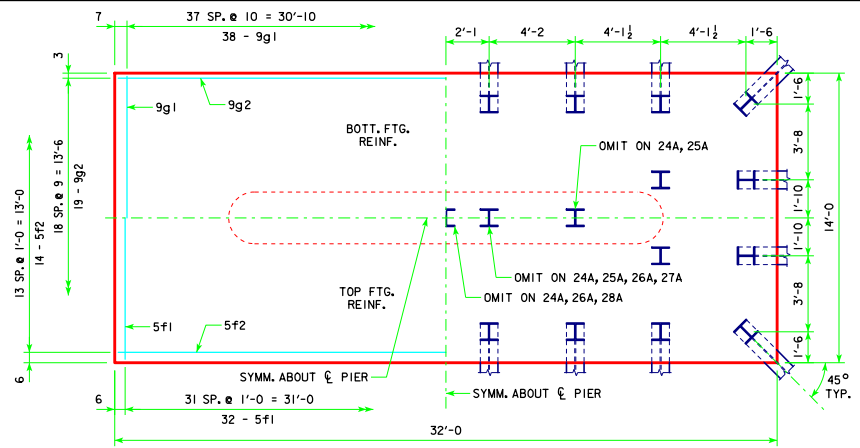


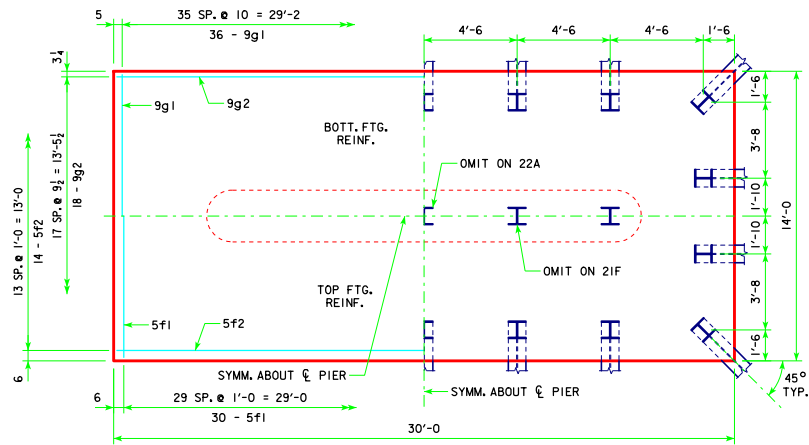
REVISED 05-13 - REVISION FOR LRFD PILE DESIGN.



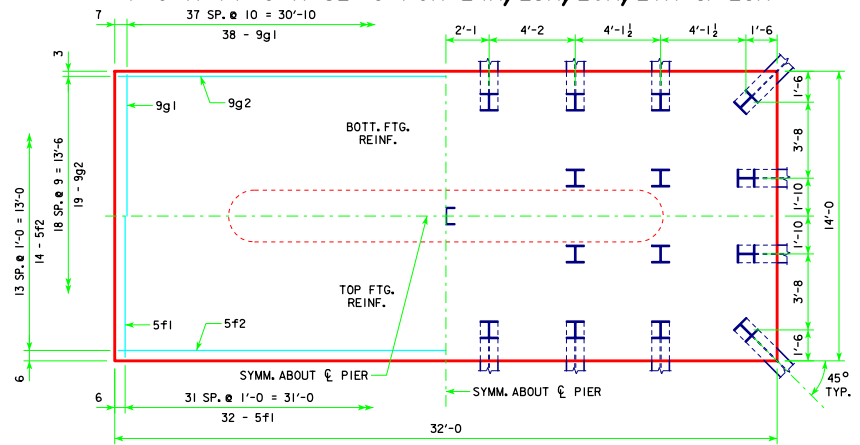
4'-0 x 12'-0 x 30'-0 FOR 21E



4'-0 x 14'-0 x 32'-0 FOR 24A, 25A, 26A, 27A & 28A




4'-0 x 14'-0 x 30'-0 FOR 21F, 22A & 23A



4'-0 x 14'-0 x 32'-0 FOR 29A

NOTE:
SEE SHEET RS40-138-10 FOR FOOTING NOTES.

05-13 LATEST REVISION DATE <i>Thomas E. McQuinn</i> APPROVED BY BRIDGE ENGINEER	 Iowa Department of Transportation Highway Division
	STANDARD DESIGN - 40' ROADWAY, 3 SPAN BRIDGES ROLLED STEEL BEAM BRIDGES JUNE, 2010
TEE PIER-HPI0x57 SRL-1 STEEL PILE FOOTINGS 20° SKEW - SHEET 3	
RS40-140-10	