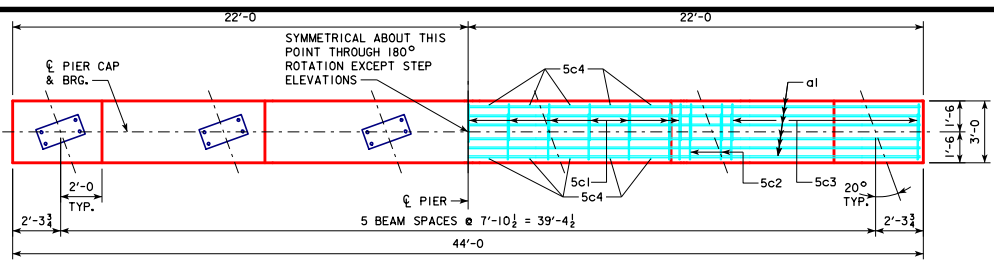
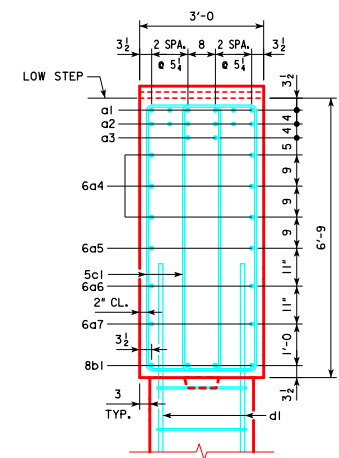


REVISED 10-2016 - CHANGED BEVELED KEYWAY ON PIER COLUMN CAP AND FOOTING TO 3"x10"x16"-0 (WAS 2"x8"x18"-0). KEYWAY LENGTH CHANGED TO BE 5'-0" LESS THAN WIDTH OF PIER COLUMN.

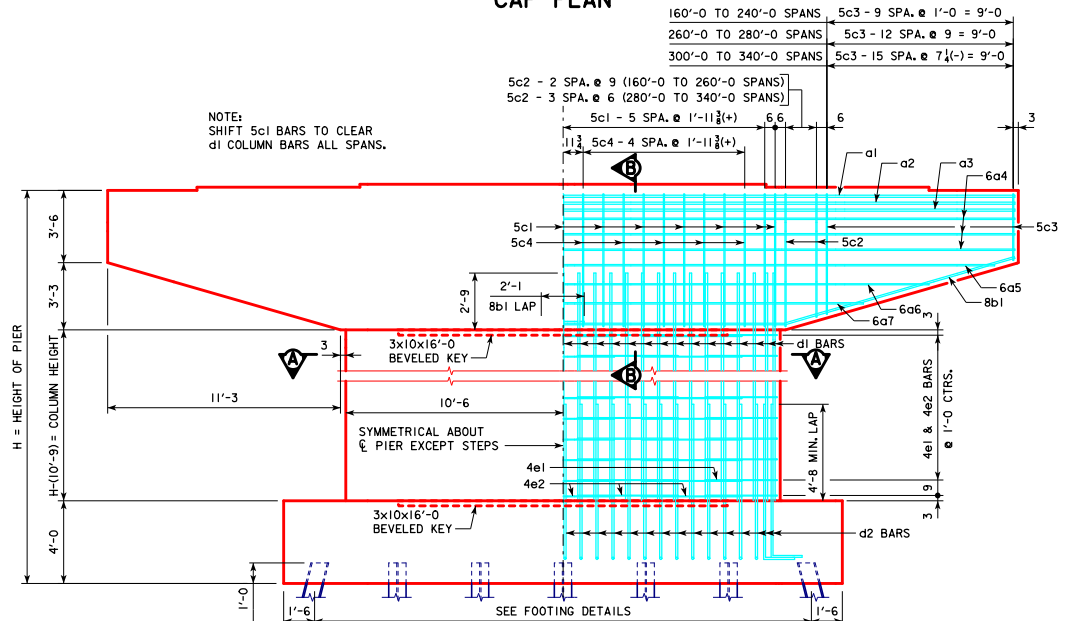


CAP PLAN

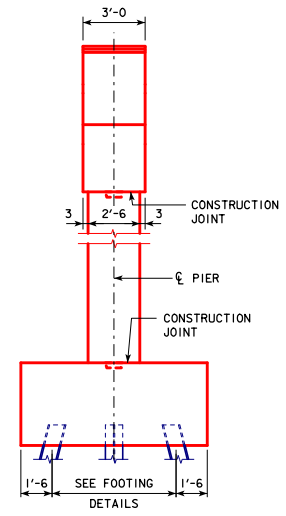
NOTE:
ANCHOR BOLTS REQUIRED FOR FIXED
PIER BEARINGS ONLY. FOR BOLT AND
BEARING SIZES, SEE RS40-093-10,
RS40-094-10 OR RS40-095-10.



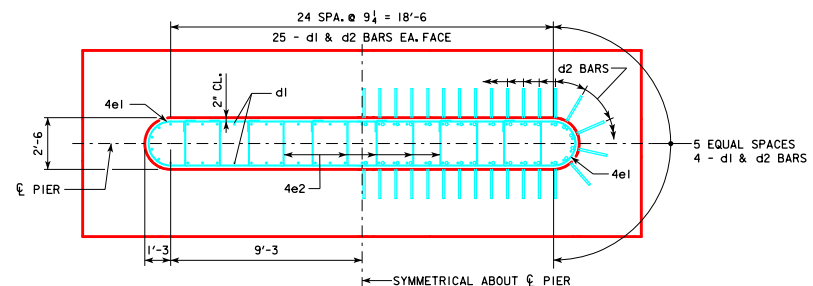
SECTION B-B



FRONT ELEVATION



END ELEVATION



SECTION A-A

<p>10-2016 LATEST REVISION DATE</p>	<p><i>Thomas E. McQuinn</i> APPROVED BY BRIDGE ENGINEER</p>	<p>IOWADOT Highway Division</p> <p>STANDARD DESIGN - 40' ROADWAY, 3 SPAN BRIDGES</p> <p>ROLLED STEEL BEAM BRIDGES</p> <p>JUNE, 2010</p>	<p>RS40-136-10</p>
		<p>TEE PIER CAP & COLUMN DETAILS 20° SKEW</p>	