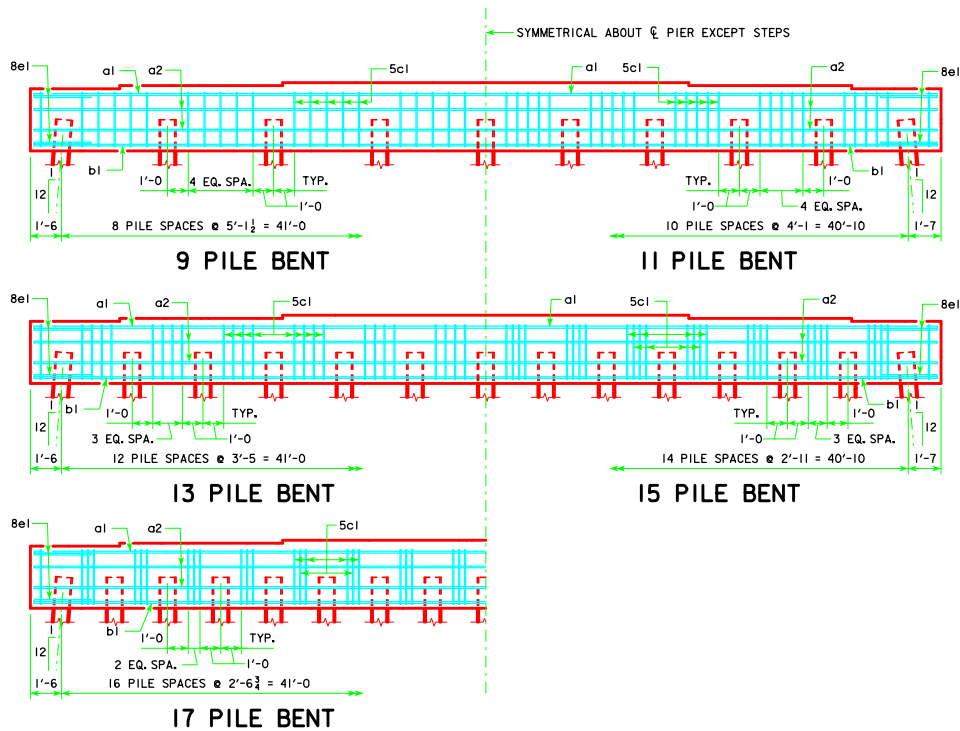
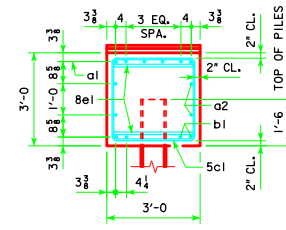


TYPICAL PLAN



NOTE:  
 THE HEIGHT OF THE STEPS ON THE BRIDGE SEAT IS EQUAL TO THE DIFFERENCE IN ELEVATIONS OF THE TOP OF SLAB AT ADJACENT BEAMS ALONG CL PIER. ANCHOR BOLTS REQUIRED FOR FIXED PIER BEARINGS ONLY. FOR BOLT AND BEARING SIZES, SEE RS40-093-14, RS40-094-14 OR RS40-095-14.



VIEW A-A  
 FOR 9, 11, 13, 15 & 17 PILE BENTS

LATEST REVISION DATE	 APPROVED BY BRIDGE ENGINEER	 STANDARD DESIGN - 40' ROADWAY, 3 SPAN BRIDGES <b>ROLLED STEEL BEAM BRIDGES</b> OCTOBER, 2014	
		PILE BENT PIERS	RS40-104-14
		20° SKEW	