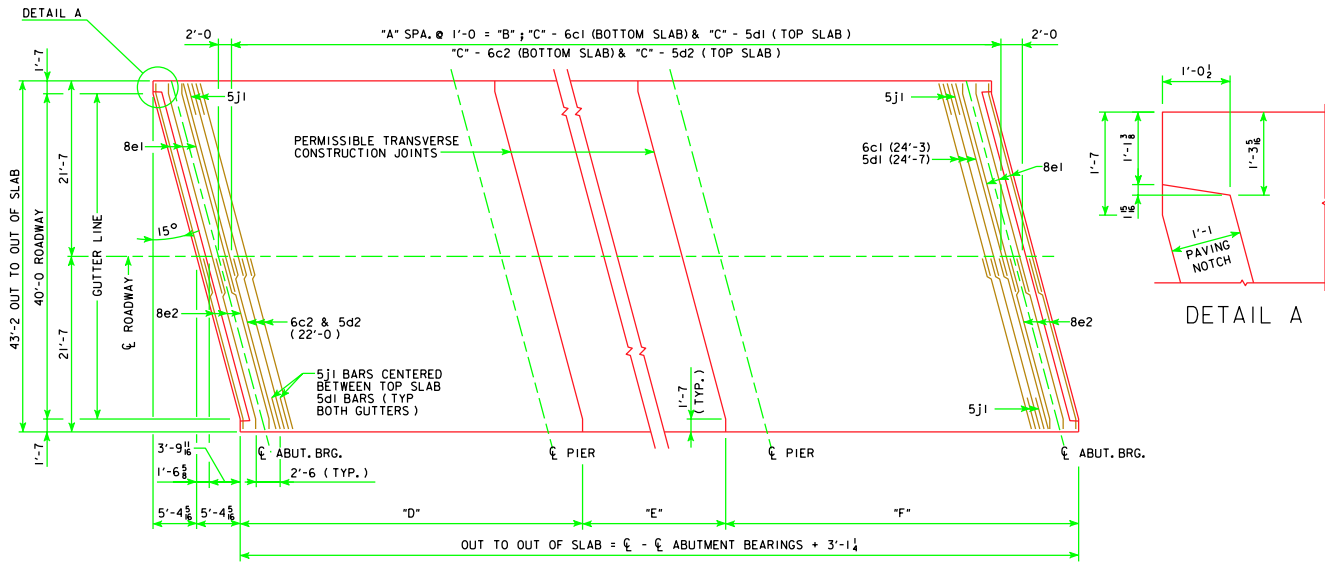
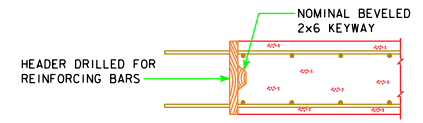


REVISED 07-09 - CHANGED THE DRAIN ANGLES DETAILS ON SECTION A-A.

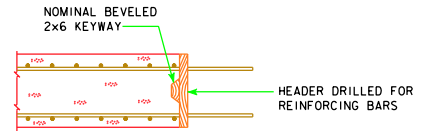


15° SKEW TRANSVERSE REINFORCING STEEL LAYOUT

BRIDGE	"A"	"B"	"C"	"D"	"E"	"F"
70' BRIDGE	66	66'-0	67	28'-0 ⁵ / ₈	17'-0	28'-0 ⁵ / ₈
80' BRIDGE	76	76'-0	77	32'-0 ⁵ / ₈	19'-0	32'-0 ⁵ / ₈
90' BRIDGE	86	86'-0	87	36'-0 ⁵ / ₈	21'-0	36'-0 ⁵ / ₈
100' BRIDGE	96	96'-0	97	40'-0 ⁵ / ₈	23'-0	40'-0 ⁵ / ₈
110' BRIDGE	106	106'-0	107	44'-0 ⁵ / ₈	25'-0	44'-0 ⁵ / ₈
120' BRIDGE	116	116'-0	117	48'-0 ⁵ / ₈	27'-0	48'-0 ⁵ / ₈
130' BRIDGE	126	126'-0	127	52'-0 ⁵ / ₈	29'-0	52'-0 ⁵ / ₈
140' BRIDGE	136	136'-0	137	56'-0 ⁵ / ₈	31'-0	56'-0 ⁵ / ₈
150' BRIDGE	146	146'-0	147	60'-0 ⁵ / ₈	33'-0	60'-0 ⁵ / ₈

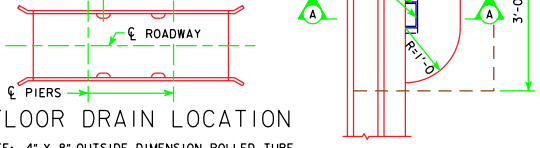


TRANSVERSE CONSTR. JOINT



LONGITUDINAL CONSTR. JOINT

70'-0	5'-6 (TYP.)
80'-0	5'-6 (TYP.)
90'-0	6'-6 (TYP.)
100'-0	6'-6 (TYP.)
110'-0	7'-6 (TYP.)
120'-0	7'-6 (TYP.)
130'-0	8'-6 (TYP.)
140'-0	8'-6 (TYP.)
150'-0	8'-6 (TYP.)



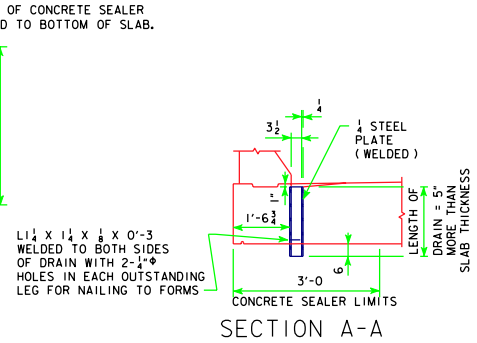
FLOOR DRAIN LOCATION

NOTE: 4" x 8" OUTSIDE DIMENSION ROLLED TUBE WITH 1/2" WALL THICKNESS MAY BE SUBSTITUTED FOR THE WELDED DRAIN SHOWN.

PART PLAN

FLOOR DRAIN DETAILS

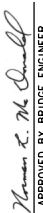

(USE FOR BARRIER RAIL ONLY, NOT REQUIRED FOR OPEN RAIL)
NOTE: DRAINS ARE TO BE GALVANIZED. INCLUDE COST OF DRAINS IN PRICE BID FOR "STRUCTURAL CONCRETE". 4 DRAINS REQUIRED.



SECTION A-A

1 1/4" x 1 1/4" x 1/8" x 0'-3" WELDED TO BOTH SIDES OF DRAIN WITH 2-1/8" HOLES IN EACH OUTSTANDING LEG FOR NAILING TO FORMS

SPAN	WEIGHT, LBS.	SPAN	WEIGHT, LBS.
70'-0	32	120'-0	41
80'-0	33	130'-0	43
90'-0	35	140'-0	45
100'-0	37	150'-0	48
110'-0	39		

LATEST REVISION DATE 07-09 APPROVED BY BRIDGE ENGINEER 	 Iowa Department of Transportation Highway Division
	STANDARD DESIGN - 40' ROADWAY, 3 SPAN BRIDGES CONTINUOUS CONCRETE SLAB BRIDGES NOVEMBER, 2006
	SUPERSTRUCTURE DETAILS ALL BRIDGES 15° SKEW