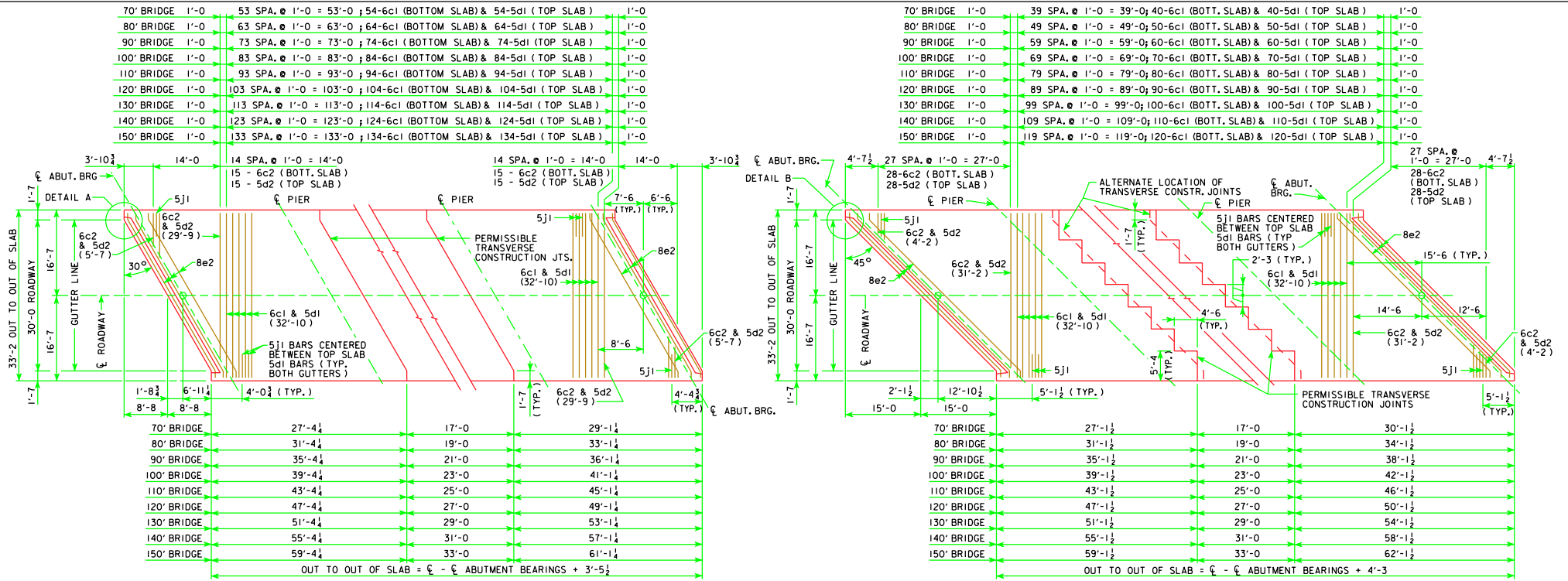


REVISED 07-09 - CHANGED THE DRAIN ANGLES DETAILS ON SECTION A-A.



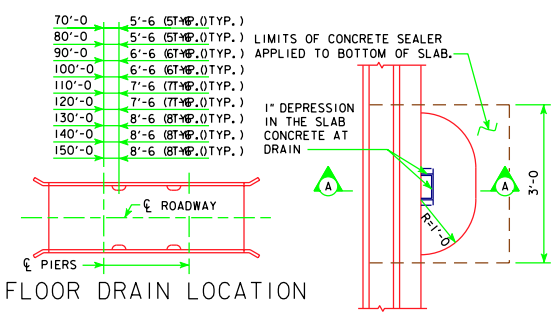
30° SKEW

TRANSVERSE REINFORCING STEEL LAYOUT

45° SKEW

NOTE: 5d2 BARS ARE TO PASS UNDER 8e2 BARS IN CONFLICT AREAS ON 30° & 45° SKEW BRIDGES.

TEMPORARY PAVING BLOCK		
SKEW	LENGTH CONCRETE	
30°	32'-7"	0.8 C.Y.
45°	40'-5"	0.9 C.Y.



FLOOR DRAIN LOCATION

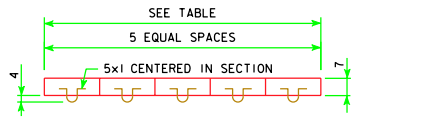
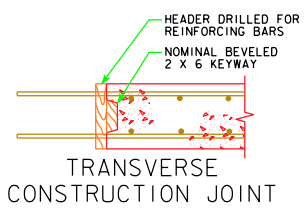
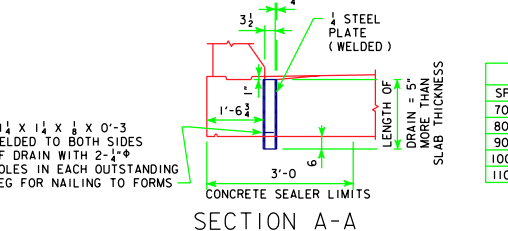
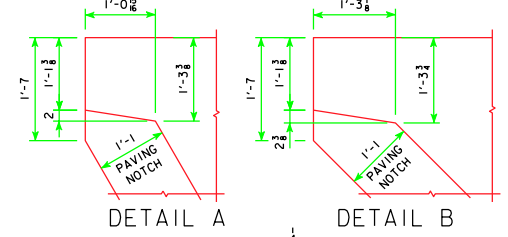
NOTE: 4" X 8" OUTSIDE DIMENSION ROLLED TUBE WITH 1/4" WALL THICKNESS MAY BE SUBSTITUTED FOR THE WELDED DRAIN SHOWN.

PART PLAN

FLOOR DRAIN DETAILS

(USE FOR BARRIER RAIL ONLY, NOT REQUIRED FOR OPEN RAIL)

NOTE: DRAINS ARE TO BE GALVANIZED. INCLUDE COST OF DRAINS IN PRICE BID FOR "STRUCTURAL CONCRETE". 4 DRAINS REQUIRED.



TEMPORARY PAVING BLOCK DETAIL

NOTE: TEMPORARY PAVING BLOCK TO BE USED WITH PAVED APPROACHES ONLY. LINE NOTCH WITH TAR PAPER BEFORE PLACING TEMPORARY PAVING BLOCK.

WEIGHT OF ONE FLOOR DRAIN			
SPAN	WEIGHT, LBS.	SPAN	WEIGHT, LBS.
70'-0"	32	120'-0"	41
80'-0"	33	130'-0"	43
90'-0"	35	140'-0"	45
100'-0"	37	150'-0"	48
110'-0"	39		

07-09

LATEST REVISION DATE

Thomas E. McQuinn

APPROVED BY BRIDGE ENGINEER

Iowa Department of Transportation
Highway Division

STANDARD DESIGN - 30' ROADWAY, 3 SPAN BRIDGES

CONTINUOUS CONCRETE
SLAB BRIDGES

NOVEMBER, 2006

SUPERSTRUCTURE DETAILS
ALL BRIDGES

30° & 45° SKEW

J30-22-06