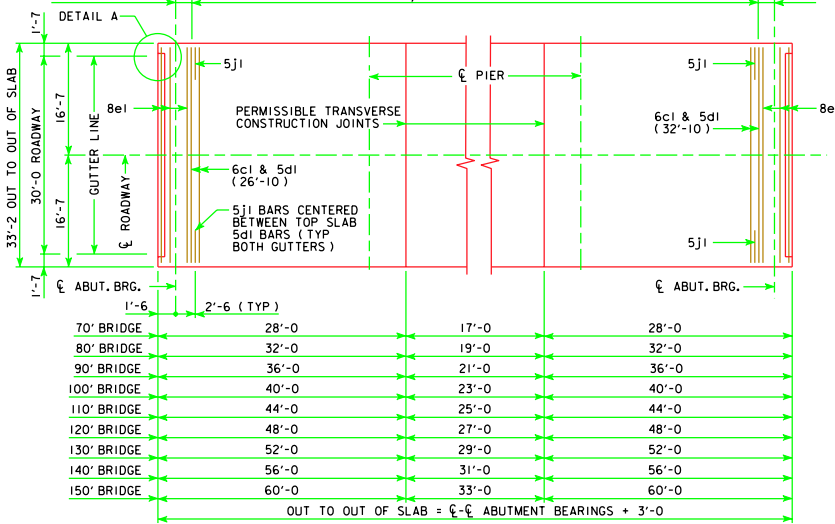


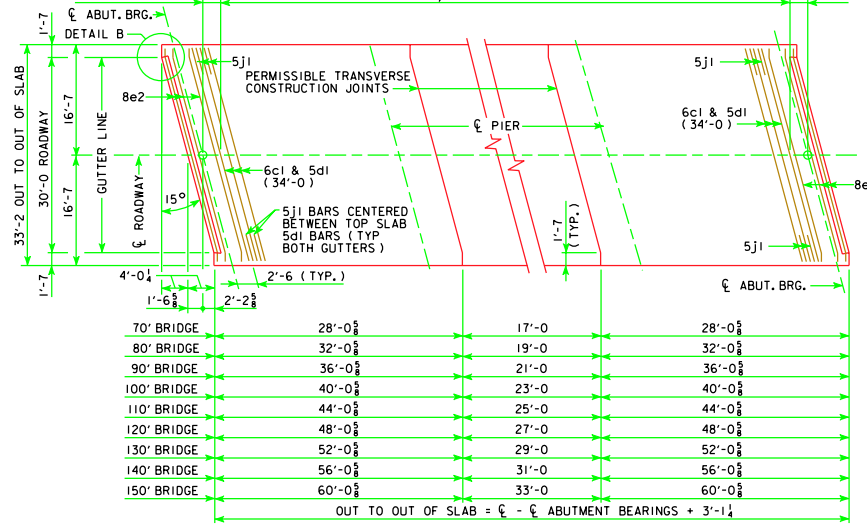
REVISED 07-09 - CHANGED THE DRAIN ANGLES DETAILS ON SECTION A-A.

70' BRIDGE 2'-0"	66 SPA. @ 1'-0" = 66'-0" ; 67-6cl (BOTTOM SLAB) & 67-5dl (TOP SLAB)	2'-0"
80' BRIDGE 2'-0"	76 SPA. @ 1'-0" = 76'-0" ; 77-6cl (BOTTOM SLAB) & 77-5dl (TOP SLAB)	2'-0"
90' BRIDGE 2'-0"	86 SPA. @ 1'-0" = 86'-0" ; 87-6cl (BOTTOM SLAB) & 87-5dl (TOP SLAB)	2'-0"
100' BRIDGE 2'-0"	96 SPA. @ 1'-0" = 96'-0" ; 97-6cl (BOTTOM SLAB) & 97-5dl (TOP SLAB)	2'-0"
110' BRIDGE 2'-0"	106 SPA. @ 1'-0" = 106'-0" ; 107-6cl (BOTTOM SLAB) & 107-5dl (TOP SLAB)	2'-0"
120' BRIDGE 2'-0"	116 SPA. @ 1'-0" = 116'-0" ; 117-6cl (BOTTOM SLAB) & 117-5dl (TOP SLAB)	2'-0"
130' BRIDGE 2'-0"	126 SPA. @ 1'-0" = 126'-0" ; 127-6cl (BOTTOM SLAB) & 127-5dl (TOP SLAB)	2'-0"
140' BRIDGE 2'-0"	136 SPA. @ 1'-0" = 136'-0" ; 137-6cl (BOTTOM SLAB) & 137-5dl (TOP SLAB)	2'-0"
150' BRIDGE 2'-0"	146 SPA. @ 1'-0" = 146'-0" ; 147-6cl (BOTTOM SLAB) & 147-5dl (TOP SLAB)	2'-0"



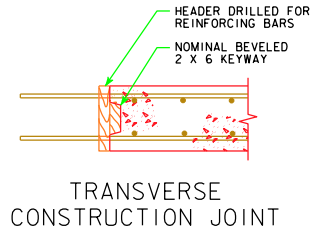
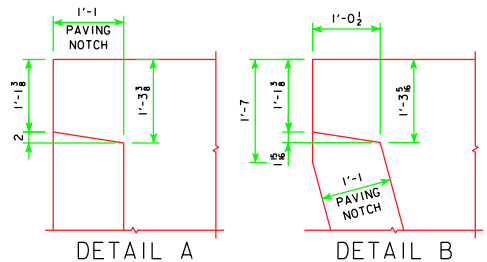
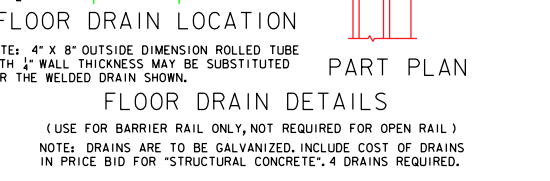
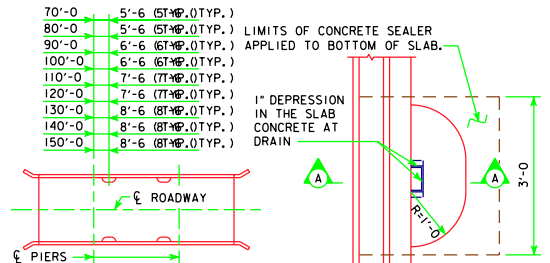
0° SKEW

70' BRIDGE 2'-0"	66 SPA. @ 1'-0" = 66'-0" ; 67-6cl (BOTTOM SLAB) & 67-5dl (TOP SLAB)	2'-0"
80' BRIDGE 2'-0"	76 SPA. @ 1'-0" = 76'-0" ; 77-6cl (BOTTOM SLAB) & 77-5dl (TOP SLAB)	2'-0"
90' BRIDGE 2'-0"	86 SPA. @ 1'-0" = 86'-0" ; 87-6cl (BOTTOM SLAB) & 87-5dl (TOP SLAB)	2'-0"
100' BRIDGE 2'-0"	96 SPA. @ 1'-0" = 96'-0" ; 97-6cl (BOTTOM SLAB) & 97-5dl (TOP SLAB)	2'-0"
110' BRIDGE 2'-0"	106 SPA. @ 1'-0" = 106'-0" ; 107-6cl (BOTTOM SLAB) & 107-5dl (TOP SLAB)	2'-0"
120' BRIDGE 2'-0"	116 SPA. @ 1'-0" = 116'-0" ; 117-6cl (BOTTOM SLAB) & 117-5dl (TOP SLAB)	2'-0"
130' BRIDGE 2'-0"	126 SPA. @ 1'-0" = 126'-0" ; 127-6cl (BOTTOM SLAB) & 127-5dl (TOP SLAB)	2'-0"
140' BRIDGE 2'-0"	136 SPA. @ 1'-0" = 136'-0" ; 137-6cl (BOTTOM SLAB) & 137-5dl (TOP SLAB)	2'-0"
150' BRIDGE 2'-0"	146 SPA. @ 1'-0" = 146'-0" ; 147-6cl (BOTTOM SLAB) & 147-5dl (TOP SLAB)	2'-0"



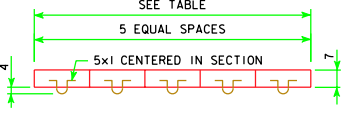
15° SKEW

TRANSVERSE REINFORCING STEEL LAYOUT



TRANSVERSE CONSTRUCTION JOINT

TEMPORARY PAVING BLOCK		
SKEW	LENGTH	CONCRETE
0°	28'-0"	0.7 C.Y.
15°	29'-0"	0.7 C.Y.



TEMPORARY PAVING BLOCK DETAIL

NOTE: TEMPORARY PAVING BLOCK TO BE USED WITH PAVED APPROACHES ONLY. LINE NOTCH WITH TAR PAPER BEFORE PLACING TEMPORARY PAVING BLOCK.

07-09 LATEST REVISION DATE	APPROVED BY BRIDGE ENGINEER <i>Thomas C. McQuinn</i>	Iowa Department of Transportation Highway Division	
		STANDARD DESIGN - 30' ROADWAY, 3 SPAN BRIDGES CONTINUOUS CONCRETE SLAB BRIDGES NOVEMBER, 2006	
		SUPERSTRUCTURE DETAILS ALL BRIDGES	J30-21-06

0° & 15° SKEW