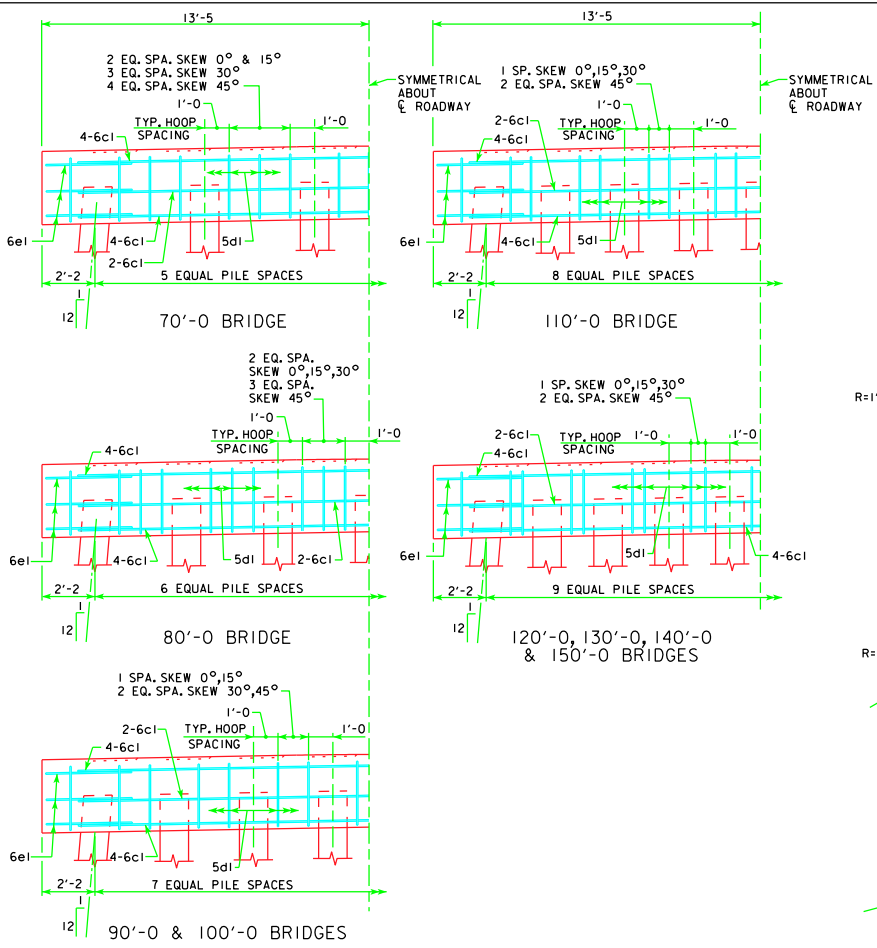
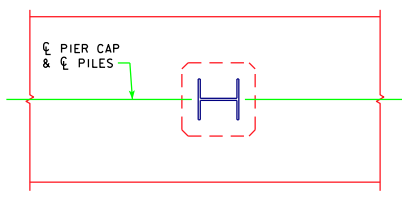


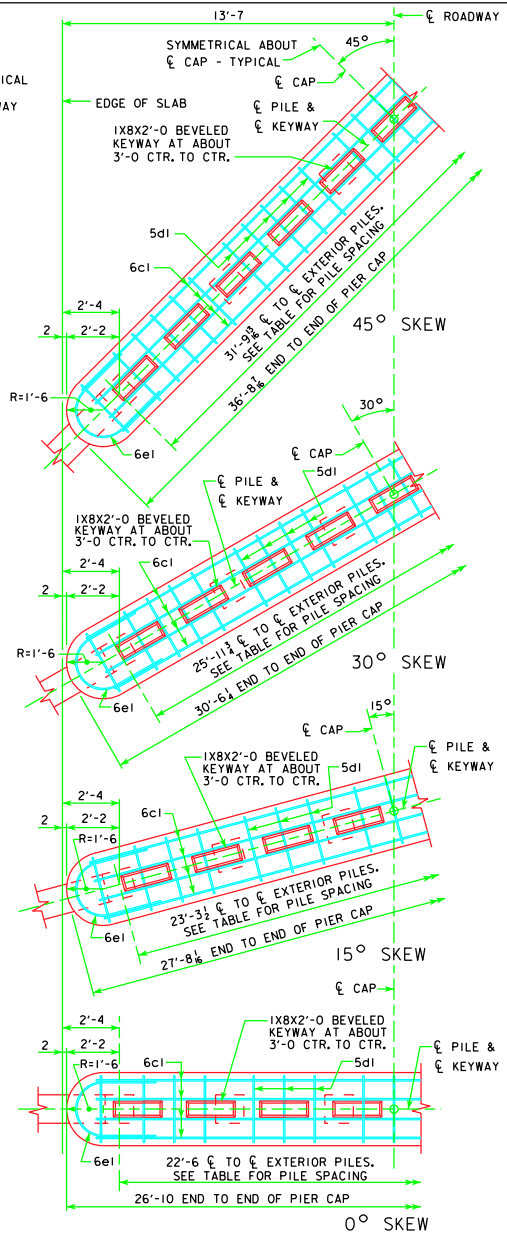
REVISED 12-08 - REVISED PILES REQUIRED 90'-0 AND 120'-0 BRIDGES. ADDED TYPE 3 PILE ORIENTATION DETAIL. EXTRA 5d1 BAR ADDED AT PIER CAP END.



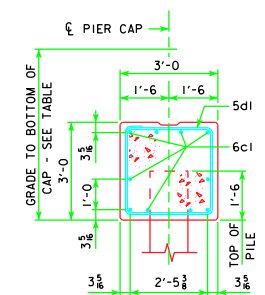
TYPICAL HALF ELEVATION PIER CAP
(LOOKING PARALLEL TO ϕ ROADWAY)



PILE ORIENTATION DETAIL FOR TYPE 3 TRESTLE BENT PILES

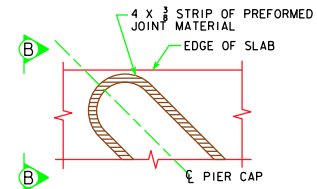


TYPICAL HALF PLAN VIEW
 NOTE: NUMBER OF PILES AND STIRRUPS SHOWN ARE FOR A 70' BRIDGE. CAP DIMENSIONS ARE TYPICAL FOR ALL SPANS.



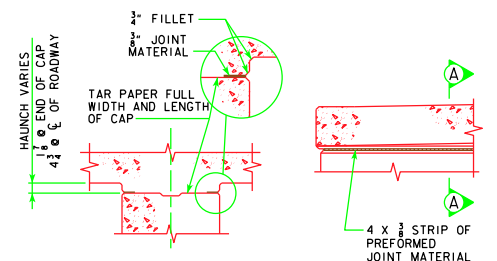
| GRADE TO BOTTOM OF CAP DIMENSION | |
|----------------------------------|-----------|
| 70'-0 BRIDGE | 4'-7 1/4 |
| 80'-0 BRIDGE | 4'-8 |
| 90'-0 BRIDGE | 4'-9 |
| 100'-0 BRIDGE | 4'-10 1/4 |
| 110'-0 BRIDGE | 4'-11 1/4 |
| 120'-0 BRIDGE | 5'-0 1/2 |
| 130'-0 BRIDGE | 5'-2 |
| 140'-0 BRIDGE | 5'-3 1/4 |
| 150'-0 BRIDGE | 5'-4 1/4 |

TYP. SECTION



PART PLAN

SHOWING TREATMENT OF 4 X 3/8 STRIP OF PREFORMED JOINT MATERIAL AT ENDS OF PIER CAP. NOTE THAT JOINT MATERIAL IS TO GO ALL THE WAY AROUND PIER CAP FOR SQUARE AND SKEWED BRIDGES.



PART SECT A-A PART SECT B-B

| | | |
|---|--|---------------------------|
| 12-08 LATEST REVISION DATE APPROVED BY BRIDGE ENGINEER [Signature] | Iowa Department of Transportation Highway Division | |
| | STANDARD DESIGN - 24' ROADWAY, 3 SPAN BRIDGES CONTINUOUS CONCRETE SLAB BRIDGES NOVEMBER, 2006 | |
| | NON-MONOLITHIC PIER CAP DETAILS ALL BRIDGES | J24-25-06 SHEET 1 OF 2 |