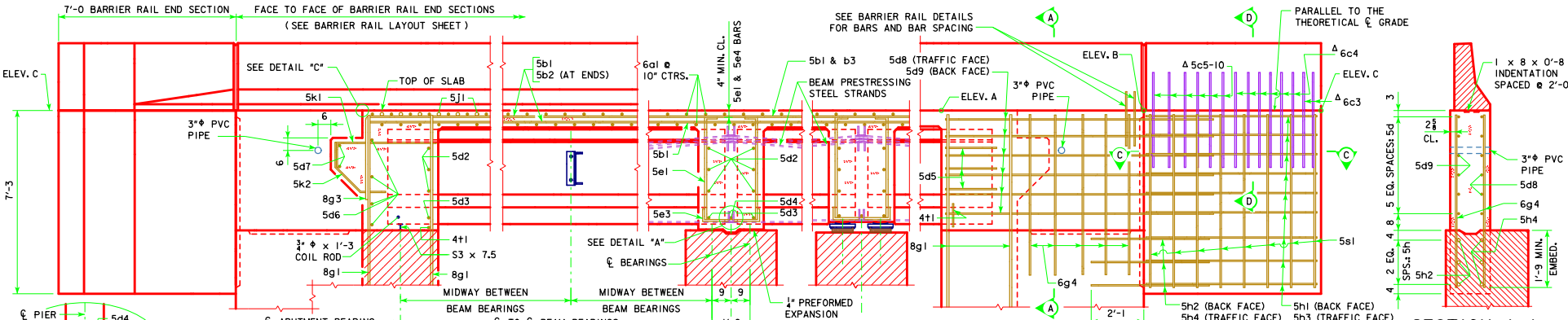


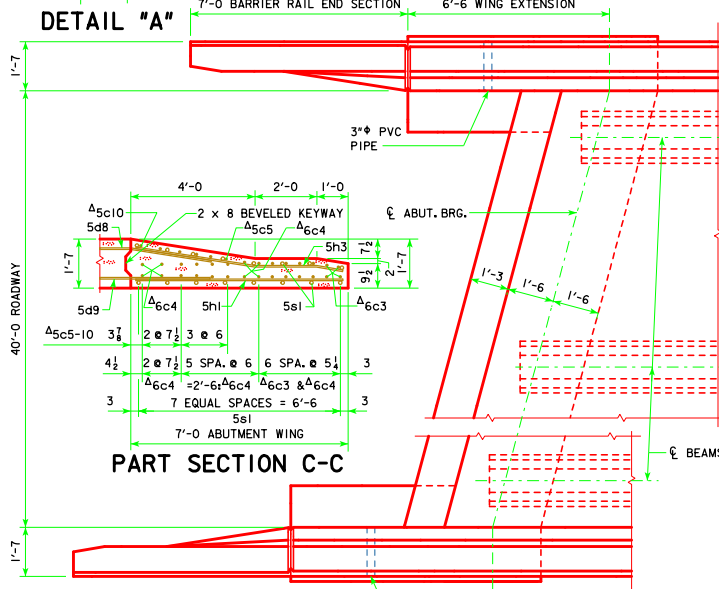
NOTE: BRIDGE IS SYMMETRICAL ABOUT  $\epsilon$



**ABUTMENT PART LONGITUDINAL SECTION NEAR GUTTER**  
(FOR DETAILS OF INTERMEDIATE DIAPHRAGM SEE SHEET H40-38-14)

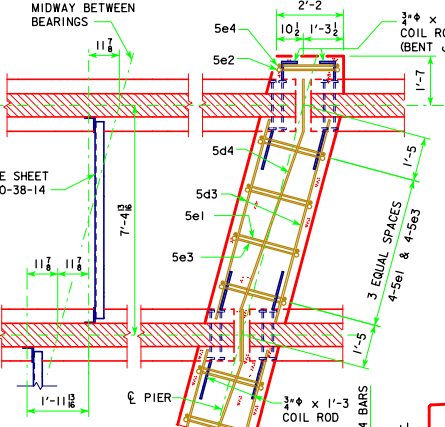
**PART END VIEW AT ABUTMENT**  
PROVIDE ELEVATIONS A, B AND C IN THE BRIDGE PLAN SHEETS.

**SECTION A-A**



**PART SECTION C-C**

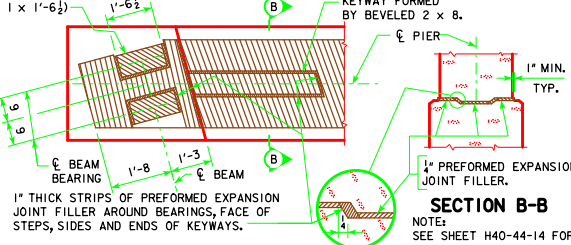
**PART PLAN**



**PART SECTION AT PIER**

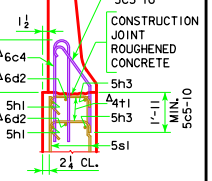
**DETAIL 'C'**

**LOCATION OF BEAM COIL TIES AND STEEL DIAPHRAGM BOLT HOLES**



**PART PLAN TOP OF FIXED PIER DETAILS**

**SECTION B-B**



**SECTION D-D**

NOTE: SEE END SECTION DETAILS IN THESE PLANS FOR DETAILS OF BARRIER RAIL END SECTION. REINFORCING BARS 6c3, 6c4, 5c5-10, 6d2 & 4t1 ARE INCLUDED IN THE BARRIER RAIL QUANTITIES.

LATEST REVISION DATE  <i>Thomas E. Mc Donnell</i> APPROVED BY BRIDGE ENGINEER	
	STANDARD DESIGN - 40' ROADWAY, THREE SPAN BRIDGE <b>PRETENSIONED PRESTRESSED CONCRETE BEAM BRIDGES</b> SEPTEMBER, 2014
	<div style="text-align: center;"> <b>LONGITUDINAL SECTION</b>          15° SKEW C BEAMS       </div> <div style="text-align: center;"> <b>H40-14-14</b> </div>