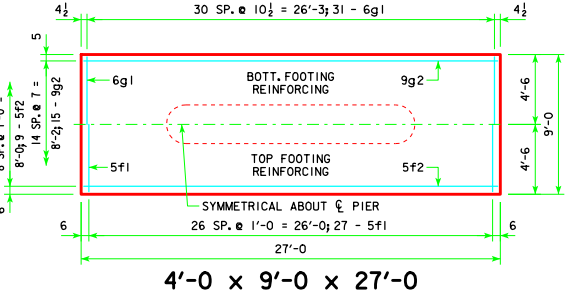
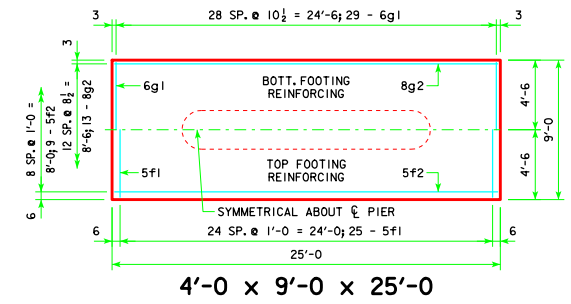
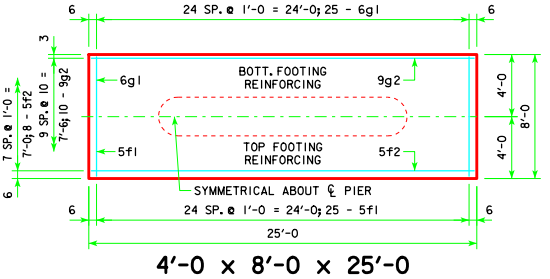
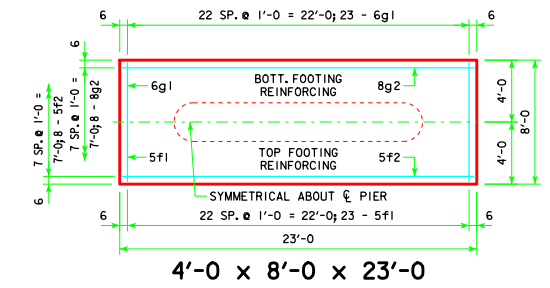
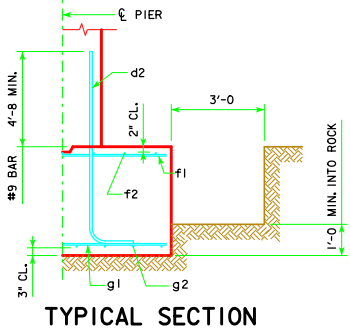
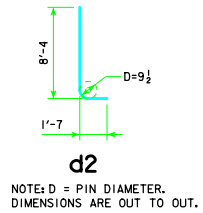
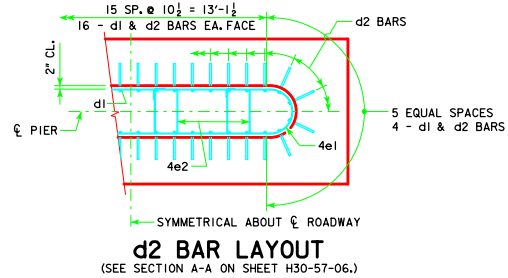


REVISED 04-13 - FOOTING NOTES MODIFIED.

H IN FT.	CL - ABUT. BRG.	CL	FOOTING SIZE
25 TO 27	138'-10"	151'-4"	4' x 8' x 23'
	151'-4"	163'-10"	
	163'-10"	176'-4"	
	176'-4"	188'-10"	
28 TO 30	201'-4"	213'-10"	4' x 8' x 25'
	213'-10"	226'-4"	
	226'-4"	243'-0"	
	243'-0"		
31 TO 33	138'-10"	151'-4"	4' x 8' x 25'
	151'-4"	163'-10"	
	163'-10"	176'-4"	
	176'-4"	188'-10"	
34 TO 36	201'-4"	213'-10"	4' x 9' x 25'
	213'-10"	226'-4"	
	226'-4"	243'-0"	
	243'-0"		
37 TO 40	138'-10"	151'-4"	4' x 9' x 27'
	151'-4"	163'-10"	
	163'-10"	176'-4"	
	176'-4"	188'-10"	
	201'-4"	213'-10"	4' x 9' x 25'
	213'-10"	226'-4"	
	226'-4"	243'-0"	
	243'-0"		



FOOTING SIZE	REINFORCING STEEL (ONE FOOTING)				STRUCTURAL CONCRETE (CY)
	BAR	NO., SIZE & SPACING	LENGTH	WEIGHT (LB.)	
4' x 8' x 23'	d2	40 - #9 AS SHOWN	9'-11"	1349	2471
	f1	23 - #5 @ 1'-0	7'-8"	184	
	f2	8 - #5 @ 1'-0	22'-8"	189	
	g1	23 - #6 @ 1'-0	7'-8"	265	
	g2	8 - #8 @ 1'-0	22'-8"	484	
4' x 8' x 25'	d2	40 - #9 AS SHOWN	9'-11"	1349	2882
	f1	25 - #5 @ 1'-0	7'-8"	200	
	f2	8 - #5 @ 1'-0	24'-8"	206	
	g1	25 - #6 @ 1'-0	7'-8"	288	
	g2	10 - #9 @ 0'-10	24'-8"	839	
4' x 9' x 25'	d2	40 - #9 AS SHOWN	9'-11"	1349	3041
	f1	25 - #5 @ 1'-0	8'-8"	226	
	f2	9 - #5 @ 1'-0	24'-8"	232	
	g1	29 - #6 @ 0'-10 1/2	8'-8"	378	
	g2	13 - #8 @ 0'-8 1/2	24'-8"	856	
4' x 9' x 27'	d2	40 - #9 AS SHOWN	9'-11"	1349	3607
	f1	27 - #5 @ 1'-0	8'-8"	244	
	f2	9 - #5 @ 1'-0	26'-8"	250	
	g1	31 - #6 @ 0'-10 1/2	8'-8"	404	
	g2	15 - #9 @ 0'-7"	26'-8"	1360	



**FOOTING NOTES:**

THESE SPREAD FOOTINGS ARE DESIGNED AND DETAILED TO BE USED WITH THE CAP AND COLUMN DETAILS OF THE TEE PIERS AS SHOWN ON SHEET H30-57-06.

THESE SPREAD FOOTINGS SHALL EXTEND AT LEAST 12 INCHES INTO SUITABLE FOUNDATION ROCK AND THE LAST 12 INCHES OF ROCK EXCAVATION SHALL BE TO NEAT LINES OF MASONRY. THE FOUNDATION ROCK SHALL HAVE A MINIMUM LRFD NOMINAL BEARING RESISTANCE OF 30 KIPS PER SQUARE FOOT (ALLOWABLE SERVICE LOAD BEARING VALUE OF AT LEAST 10 KIPS PER SQUARE FOOT).

04-13 LATEST REVISION DATE  <i>Thomas E. M. D...ell</i> APPROVED BY BRIDGE ENGINEER	
	STANDARD DESIGN - 30' ROADWAY, THREE SPAN BRIDGES <b>PRETENSIONED PRESTRESSED CONCRETE BEAM BRIDGES</b> DECEMBER, 2006
	<b>TEE PIER - SPREAD FOOTINGS</b> 0° SKEW - H=25' to 40' <span style="float: right;"><b>H30-63-06</b></span>